

SpeedTouch™

USB/330

ADSL USB Modems

Setup and User's Guide

Release R3.0



THOMSON

speedtouch™

SpeedTouch™

USB/330

Setup and User's Guide

Release R3.0

speedtouch™

Status v2.0
Change Note PeckelbeenS
Short Title STUSB/330 Setup and User's Guide R3.0 (en)
Copyright

© 2003 THOMSON. All rights reserved. Passing on, and copying of this document, use and communication of its contents is not permitted without written authorization from THOMSON. The content of this document is furnished for informational use only, may be subject to change without notice, and should not be construed as a commitment by THOMSON. THOMSON assumes no responsibility or liability for any errors or inaccuracies that may appear in this document.

Contents

1	SpeedTouch™ Introduction	5
1.1	Getting Acquainted with the SpeedTouch™	6
1.2	SpeedTouch™ Support	7
<hr/>		
2	SpeedTouch™ Installation	9
2.1	Installation for Windows Operating Systems	10
2.1.1	SpeedTouch™ Wizard Installation	11
2.1.2	Dr SpeedTouch™	15
2.2	Installation for Mac Operating Systems	18
2.2.1	Installation for Mac OS8.6 and Mac OS9.x	19
2.2.2	Installation for Mac OS X (Mac OS10.x)	22
<hr/>		
3	SpeedTouch™ Internet Connectivity	27
3.1	Internet Sessions via a PPP Connection	28
3.1.1	PPP Sessions for Windows	29
3.1.2	PPPoA Sessions for Mac OS 8.6 and 9.x	32
3.1.3	PPP Sessions for Mac OS X	34
3.2	Internet Sessions via an RFC1483 Bridged Connection	35
3.2.1	Using the Windows XP Dial-in Client	36
3.2.2	Using the Mac OS X Dial-in Client	40

4	SpeedTouch™ Diagnostics	43
4.1	The SpeedTouch™ Status Icon.....	44
4.2	The Diagnostics Application.....	45
4.2.1	The Diagnostics Application for Windows.....	46
4.2.2	The Diagnostics Application for Mac OS 8.6/9.x49	
4.2.3	The Diagnostics Application for Mac OS 10.x.....	51

5	Troubleshooting	53
5.1	General.....	54
5.2	Removing a SpeedTouch™ Driver Installation	56
5.2.1	Removing a SpeedTouch™ Driver Installation from a Windows Operating System	57
5.2.2	Removing a SpeedTouch™ Driver Installation from Mac OS 8.6/9.x.....	58
5.2.3	Removing a SpeedTouch™ Driver Installation from Mac OS 10.x.....	59

1 SpeedTouch™ Introduction

Introduction Thank you for purchasing the SpeedTouch™USB/330 ADSL USB modem!

With the award-winning SpeedTouch™ Asymmetric Digital Subscriber Line (ADSL) modem surfing the Internet will become a whole new experience.

In this Setup and User's Guide

This Setup and User's Guide will assist you in getting acquainted with the Speed-Touch™USB/330 ADSL USB modem and in getting connected quickly to the Internet.

Terminology

Generally, the SpeedTouch™USB and SpeedTouch™330 will be referred to as Speed-Touch™ in this User's Guide.

Safety instructions

Before connecting the SpeedTouch™, read the SpeedTouch™ Quick Installation Guide and Safety Instructions.

Documentation and software updates

The SpeedTouch™ products continue to evolve as extra and new functionalities are made available.

For more information on the latest technological innovations, software upgrades, and documents, please visit the SpeedTouch™ web site at:

www.speedtouch.com

1.1 Getting Acquainted with the SpeedTouch™

Delivery check Check your SpeedTouch™ package for the following items:

- One SpeedTouch™USB or SpeedTouch™330
- 2m DSL cable (RJ11/RJ11, RJ14/RJ14)
- The SpeedTouch™ Setup CD-ROM

In the event of damaged or missing items, contact your product dealer for further instructions.

Other materials Your SpeedTouch™ shipping carton may also include release notes, safety and conformity declarations and other materials.

The SpeedTouch™ Unlike most traditional modems, the electronic circuitry of the SpeedTouch™ has been shaped into a stylish body.



Note As you notice, there is no separate mains plug, cord, or power adapter. This is because the SpeedTouch™ is powered via the USB connection.

ADSL service The appropriate DSL service must be available at your premises:

- ADSL service must be enabled on your telephone line.
- As both telephone and ADSL service are simultaneously available from the same copper pair, you will need a central splitter or distributed filters for decoupling ADSL and telephone signals.

Public telephone lines carry voltages that can cause electric shock. Only install splitter/filters yourself if these are qualified for that purpose.

Computer Your computer must be equipped with an USB port capable of powering attached USB devices. You may also use an USB hub to connect the SpeedTouch™.

Note Make sure you are not using low-powered USB ports to connect the Speed-Touch™. If you are not sure of the type of USB port, see the User's Guide of your computer or USB port hub.

1.2 SpeedTouch™ Support

Supported Operating Systems

This User's Guide describes the installation and use of the SpeedTouch™ under the following Operating Systems (OSs):

- Microsoft Windows OSs
 - Windows 98/98SE
 - Windows Millennium
 - Windows 2000
 - Windows XP
- Mac OSs
 - Mac OS8.6
 - Mac OS 9.x
 - Mac OS10.1 or higher

Note Mac OS10.0 users must download the free upgrade to Mac OS10.1 to be able to install and use the SpeedTouch™ device.

The SpeedTouch™ also supports Linux platforms. Refer to the SpeedTouch™ Support pages for more information.

System software updates (all OSs)

You can check for system software upgrades via the support pages at the SpeedTouch™ web site:

www.speedtouch.com/support.htm

System software upgrades may also be available from your Service Provider. Please contact your Service Provider for more information.

System software updates on a Windows platform

If your computer runs a Microsoft Windows operating system you can access the SpeedTouch™ web site using the SpeedTouch™ CD Browser:

- 1 Insert the SpeedTouch™ Setup CD-ROM in your PC's CD-ROM drive. The SpeedTouch™ CD Browser will start automatically.

Note If the SpeedTouch™ CD Browser window does not appear automatically, open a Run window via Start > Run from the Start menu and enter the following path: D:\Menu.exe, where D stands for the drive letter of your CD-ROM drive.

- 2 Choose a language in the Choose Language window.
- 3 Click *Install SpeedTouch™ USB/330 Software* in the CD Browser menu.
- 4 Click *Check for New USB Software*.
- 5 Your web browser appears and loads the SpeedTouch™ upgrade web page.

System software updates may also be available from your Service Provider. Please contact your Service Provider for more information.

System software
upgrade procedure

To upgrade the SpeedTouch™ system software proceed as follows:

- 1 Download the newest web upgrade from the Internet to a location on your local computer.
- 2 Browse to the location where the upgrade file resides.
- 3 Double-click the upgrade file.
- 4 Follow the instructions.

2 SpeedTouch™ Installation

Connection methods

The SpeedTouch™ supports the following connection methods:

- PPP (PPPoE or PPPoA)
- RFC 1483 Bridged

Note PPPoE connectivity for Mac OS8.6/9.x is only supported through an external PPPoE client application. The PPPoE client application software must be provided by your Service Provider.

You must select the appropriate service profile and the corresponding local setting during the installation process. This information should be provided by your Service Provider.

What you need from your ISP

You might need a user account with an Internet Service Provider (ISP) for Internet access. For this user account, it will provide you:

- A user name (logon ID)
- A password

Other information may be required, depending on the ISP's specific requirements.

Installation

The installation procedure to follow depends on the Operating system you are running. In case your computer runs:

- An MS Windows Operating System
Proceed with “2.1 Installation for Windows Operating Systems” on page 10.
- A Mac Operating System
Proceed with “2.2 Installation for Mac Operating Systems” on page 18.

2.1 Installation for Windows Operating Systems

Introduction This section will assist you in installing the SpeedTouch™ and preparing your PC for your Internet connectivity.

Supported Operating Systems

One of the following OSs must be readily installed on your PC:

- Microsoft Windows 98/98SE or Microsoft Windows ME
- Microsoft Windows 2000 or Microsoft Windows XP

You may need the Windows installation CD-ROM during installation.

Minimum System requirements

- For Windows98/98SE/ME:
 - Pentium processor 166 MHz or compatible
 - 32 megabytes (MB) of memory
 - For Window2000/XP:
 - Pentium II processor or compatible
 - 64 MB of memory
 - 30 MB of free disk space
-

Windows OS differences

The installation procedures might be slightly different depending on the Microsoft Windows OS you are using:

- Some windows will look different
- For Windows 98/98SE, at the end of the installation procedure, you may be asked to enter an area code for Dial-up connections.

2.1.1 SpeedTouch™ Wizard Installation

Previous SpeedTouch™ installations

If a previous SpeedTouch™ installation resides on your computer, you are able to perform an upgrade of the existing SpeedTouch™ installation.

The SpeedTouch™ Setup wizard

The SpeedTouch™ Setup procedure consists of two major parts:

- The driver installation procedure
- The hardware installation procedure

In addition it is recommended to install the Dr SpeedTouch™ application. See “2.1.2 Dr SpeedTouch™” on page 15 for more information.

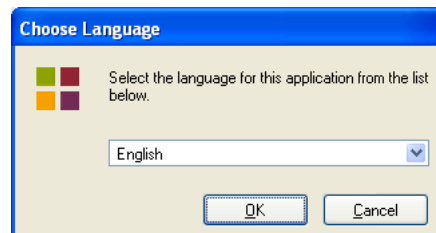
The driver installation procedure

Proceed as follows:

- 1 Insert the SpeedTouch™ Setup CD-ROM in your PC's CD-ROM drive. The SpeedTouch™ CD Browser will start automatically.

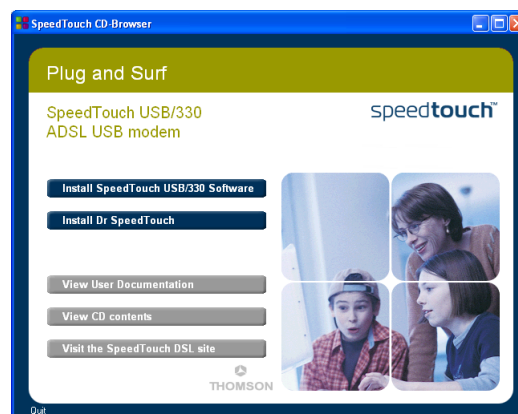
Note If the SpeedTouch™ CD Browser window does not appear automatically, open a Run window via Start > Run from the Start menu and enter following path: D:\menu.exe, where D is the drive letter of your CD-ROM drive.

- 2 The Choose Language window prompts you to select a language:



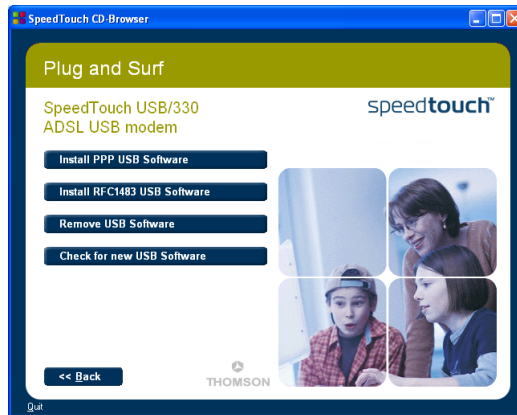
Select the language of your choice and click *OK*.

- 3 The SpeedTouch™ CD Browser menu appears:



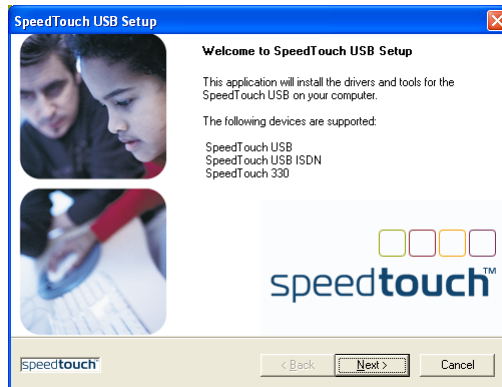
Click *Install SpeedTouch™ USB/330 Software*.

- 4 The following window appears:



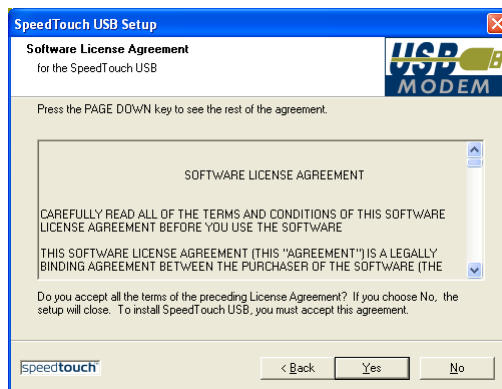
Click either *Install PPP USB Software* or *Install RFC1483 USB Software* depending on your Service Provider's specifications.

- 5 The following window asks you to select your local setting. Select the appropriate setting as specified by your Service Provider.
- 6 The Welcome to SpeedTouch™ Setup window appears:



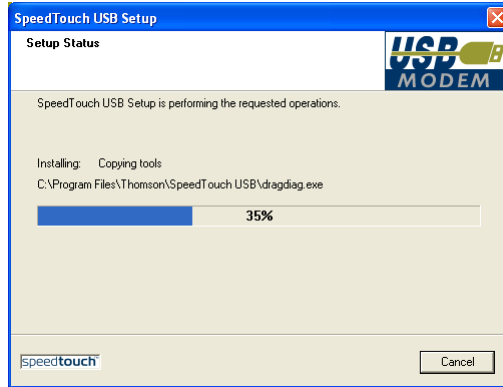
Click *Next* to proceed.

- 7 The Software License Agreement window appears:

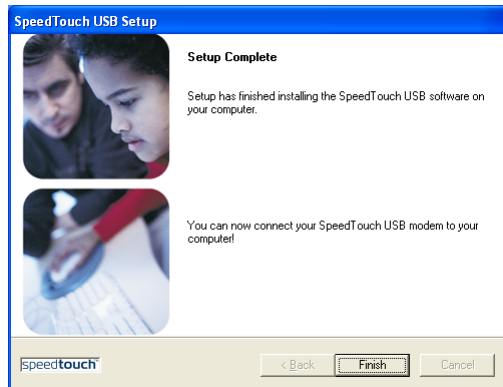


You must accept before continuing. Click *Yes* to accept.

- 8 The following windows ask you to select a destination and program folder. In most cases the proposed folders are best suited for the SpeedTouch™ driver software. Follow the instructions and click *Next* whenever requested.
- 9 The SpeedTouch™ USB Setup wizard copies SpeedTouch™ driver software to your local disk:




- 10 At the end of the procedure the following window appears:



Click *Finish* to complete the installation.

The hardware installation procedure

- 1 Use the ADSL cable provided to wire the SpeedTouch™ ADSL port to your telephone wall outlet or distributed filter.
- 2 Insert the SpeedTouch™'s USB connector into the computer's USB port
An USB port can be easily located, it is marked with the typical USB symbol: 

Note You can also connect your computer to the SpeedTouch™ via a USB hub.

- 3 Windows will automatically recognize the SpeedTouch™:



- 4 The Windows Found New Hardware Wizard finishes the installation by setting up the SpeedTouch™'s ADSL Wide Area Network (WAN) connectivity.

The installation of the SpeedTouch™ is now finished. The SpeedTouch™ is now prepared to connect to the Internet (See “3 SpeedTouch™ Internet Connectivity” on page 27).

2.1.2 Dr SpeedTouch™

Introduction The Dr SpeedTouch™ application allows you to diagnose and troubleshoot your SpeedTouch™.

With the Dr SpeedTouch™ application you can do the following:

- View the status and performance of the SpeedTouch™ device
- Run a Diagnostics program to locate a connectivity problem
- Run a Troubleshooter to help you solve a connectivity problem.

Supported Operating Systems

Installing and using Dr SpeedTouch™ is only supported for following Microsoft Windows Operating Systems:

- Windows 98
- Windows 98SE
- Windows ME
- Windows 2000
- Windows XP

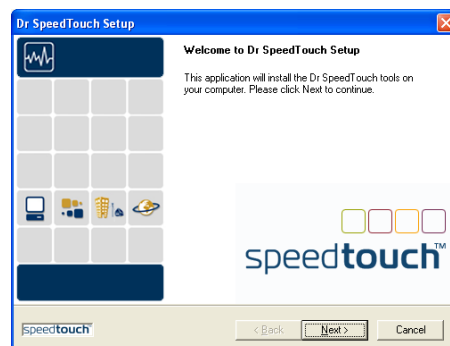
Installation procedure

The installation procedure proceeds as follows:

- 1 Insert the SpeedTouch™ Setup CD-ROM in your PC's CD-ROM drive. The SpeedTouch™ CD Browser will start automatically. Choose your language and click *Install Dr SpeedTouch™*.

Note If the SpeedTouch™ CD Browser window does not appear automatically, open a Run window via Start > Run from the Start menu and enter the following path: D:\Menu.exe, where D is the drive letter of your CD-ROM drive.

- 2 The Dr SpeedTouch™ Setup wizard appears:




Click *Next* to continue.

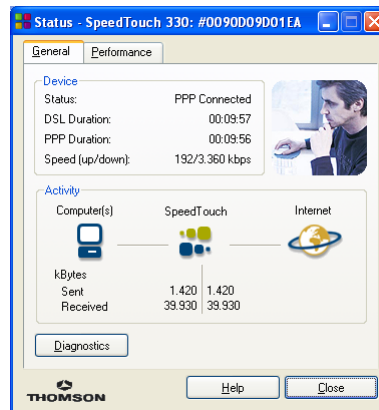
- 3 Subsequent screens will guide you through the installation. Follow the instructions and click *Next* whenever requested.
- 4 After installation, Dr SpeedTouch™ is started automatically.

Using Dr SpeedTouch™

By default Dr SpeedTouch™ is started automatically at boot of your system and runs in the background, i.e. minimized in the status area.

To show Dr SpeedTouch™:

- 1 Double-click  in the status area.
- 2 Dr SpeedTouch™ searches your network for SpeedTouch™ devices. If more than one device is found, a list of available devices will be provided. If this is the case, select your SpeedTouch™ device (SpeedTouch™USB or SpeedTouch™330) and click *OK*.
- 3 The Dr SpeedTouch™ window appears:



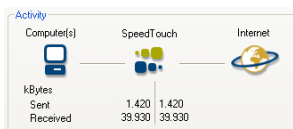
Dr SpeedTouch™ features

The Dr SpeedTouch™ application consists of two sections:

- Click the *General* tab to:
 - View SpeedTouch™ device information and status:
- View activity between your computer, the SpeedTouch™ and the Internet:



Device	
Status:	PPP Connected
DSL Duration:	00:09:57
PPP Duration:	00:09:56
Speed (up/down):	192/3.360 kbps

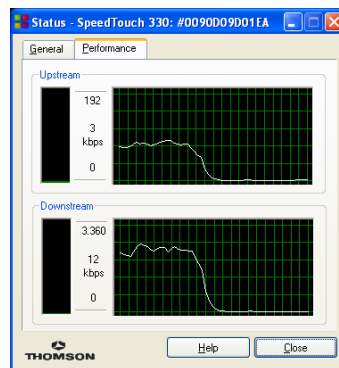


kBytes	Computer(s)	SpeedTouch	Internet
Sent	1.420	1.420	
Received	39.930	39.930	

- Click *Diagnostics* to test and troubleshoot the connectivity of your computer and the SpeedTouch™ device to your ISP and the Internet via the Diagnostics wizard.



- Select the *Performance* tab to monitor the downstream and upstream performance of your DSL connection:



For more information on Dr SpeedTouch™ click *Help* in the application or press F1 for context sensitive help.

2.2 Installation for Mac Operating Systems

Introduction This section will assist you in installing the SpeedTouch™ and preparing your computer for your Internet connectivity.

Installation The installation procedure to follow depends on the Mac OS you are running. In case your computer runs:

- Mac OS 8.6 or Mac OS9.x
Proceed with “2.2.1 Installation for Mac OS8.6 and Mac OS9.x” on page 19.
- Mac OS X (Mac OS10.x)
Proceed with “2.2.2 Installation for Mac OS X (Mac OS10.x)” on page 22.

2.2.1 Installation for Mac OS8.6 and Mac OS9.x

Supported Operating Systems

One of the following OSs must be readily installed on your computer:

- Mac OS8.6
- Mac OS9.x

Minimum system requirements

- 640 kilobytes (KB) of free disk space

The SpeedTouch™ installation

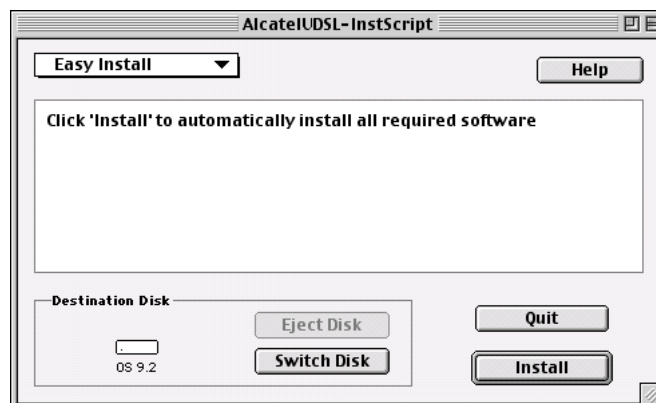
The SpeedTouch™ installation consists of two major parts:

- The driver installation procedure
- The hardware installation procedure

The driver installation procedure

Proceed as follows:

- 1 Insert the SpeedTouch™ Setup CD-ROM in your computer's CD-ROM drive and open the OS9 folder.
- 2 Open the Setup folder.
- 3 Depending on your Service Provider's specifications open either the:
 - WAN folder to install a PPPoA connection
 - LAN folder to install an RFC1483 Bridged connection.
- 4 In this folder open the folder corresponding to your local setting (this should be specified by your Service Provider) and double-click *Installer*.
- 5 The installation window appears:.



Make sure that *Easy Install* is selected in the drop-down list box. Click *Switch Disk* to select your computer's OS8.6/9.x partition if needed. Click *Install* to continue.

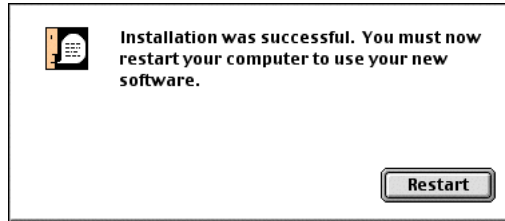
- 6 The installer copies the necessary files to your computer.

7 The following screen appears:



Click *OK* to proceed.

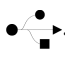
8 At the end of the procedure, the following window appears:

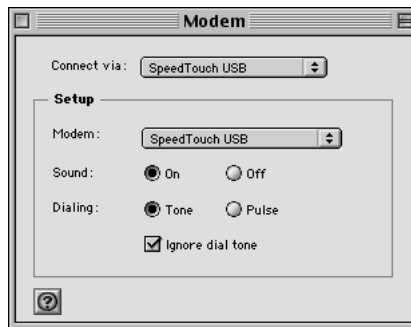


Click *Restart* to finish the installation and restart your computer.

The hardware installation procedure

After restarting your computer, proceed as follows:

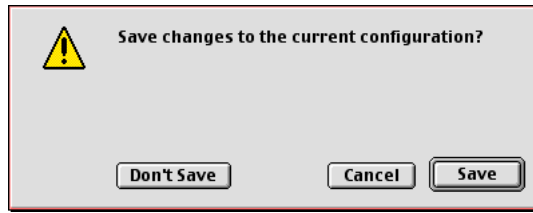
- 1 Use the ADSL cable provided to wire the SpeedTouch™ ADSL port to your telephone wall outlet or distributed filter.
- 2 Insert the SpeedTouch™'s USB connector into the computer's USB port. A USB port can be easily located, it is marked with the typical USB symbol: .
Note You can also connect your computer to the SpeedTouch™ via a USB hub.
- 3 On the Apple menu, point Control Panels and click *Modem*.
- 4 The Modem control panel appears



Make sure the SpeedTouch™ is selected in the Connect via list and Modem list.

Note If you are using an RFC1483 Bridged connection you may only have to adjust the Modem list selection.

- 5 Close the Modem control panel.
A dialog box appears asking whether you want to save the changes you made:



Click *Save* to save your changes to the configuration.

As a result your SpeedTouch™ connection is installed and ready for use. The Speed-Touch™ is now prepared for connecting you to the Internet (See “3 SpeedTouch™ Internet Connectivity” on page 27).

2.2.2 Installation for Mac OS X (Mac OS10.x)

Supported Operating Systems

The following OS must be readily installed on your computer:

- Mac OS 10.1/10.2 or higher

Minimum system requirements

- 121 megabytes (MB) of free disk space (during installation process)

The SpeedTouch™ Installation

The SpeedTouch™ installation consists of two major parts:


- The software installation procedure
- The hardware installation procedure

If you want to connect to the Internet via a PPP (PPPoA or PPPoE) connection some additional configuration is required.

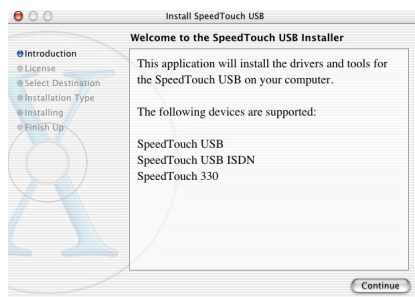
The driver installation procedure

Proceed as follows:

- 1 Insert the SpeedTouch™ Setup CD-ROM in your computer's CD-ROM drive and open the OSX folder.
- 2 Open the Setup folder.
- 3 Depending on your Service Provider's specifications open either the:
 - WAN folder to install a PPPoA connection or a PPPoE connection
 - LAN folder to install an RFC1483 Bridged connection.
- 4 In this folder open the folder corresponding to your local setting (this should be specified by your Service Provider) and double-click *SpeedTouchUSB* to start the installation procedure.

Note You need administration rights to perform this installation. If the installation wizard prompts you for authorization, click  to enter the administrator name and password or phrase.

- 5 The installation window appears:



Click *Continue*.

- 6 The Software License Agreement screen appears:



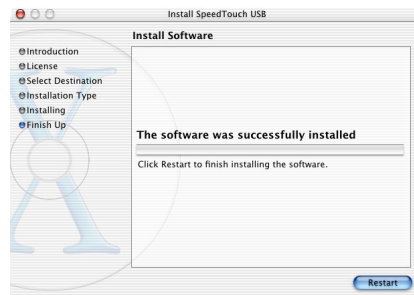
When you click *Continue*, you are prompted to agree to the terms of the software license agreement. Click *Agree* to continue.

- 7 The following screen allows you to select a destination volume to install the SpeedTouch™:



The installation wizard automatically highlights your OS X partition. Select the destination volume of your choice and click *Continue*.

- 8 Follow the instructions and click *Continue* or *Install* whenever requested
- 9 At the end of the procedure, the following window appears:

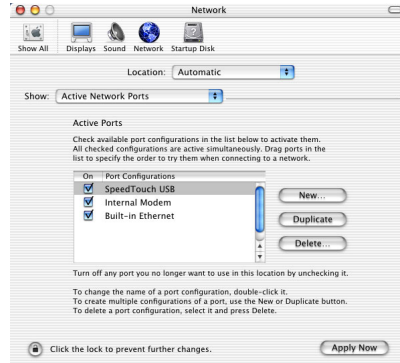


Click *Restart* to quit the installer.


The hardware installation procedure

Proceed as follows:

- 1 After restarting your computer click *System Preferences* on the Apple menu.
- 2 Click the *Network* icon in the *System Preferences* window.
- 3 The *Network* window appears:



In the *Show* list, click *Active Network Ports* (or *Network Port Configuration*), and drag:

- *SpeedTouch™ USB* to the top of the list in case of PPP connectivity.
 - *Ethernet Adaptor (enx)* to the top of the list in case of RFC1483 connectivity.
- 4 If you do not intend to use the other interfaces, clear the corresponding check boxes.
Click *Apply Now* to confirm the modifications to the network settings.
 - 5 Use the ADSL cable provided to wire the *SpeedTouch™* ADSL port to your telephone wall outlet or distributed filter.
 - 6 Plug the *SpeedTouch™*'s USB connector into the computer's USB port.
A USB port can be easily located, it is marked with the typical USB symbol: 

Note You can also connect your computer to the *SpeedTouch™* via a USB hub.

If you want to connect to the Internet via:

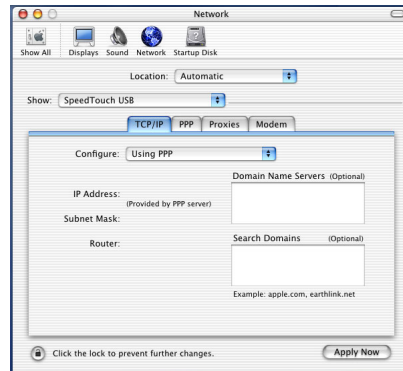
- An RFC1483 connection your connection is installed and ready for use. The *SpeedTouch™* is now prepared for connecting you to the Internet (See “3.2 Internet Sessions via an RFC1483 Bridged Connection” on page 35).
- A PPP connection some additional configuration is required (see below).

PPP configuration

If you are installing a PPP connection some additional configuration is required.

Proceed as follows:

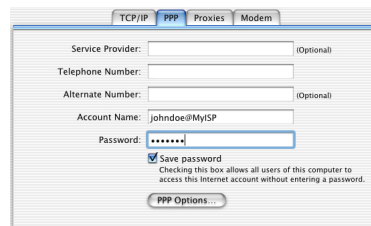
- 1 On the Apple menu click *System Preferences*.
- 2 The System Preferences window appears. Click the *Network* icon.
- 3 The Network window appears:



Make sure SpeedTouch™ USB is selected in the Show list. The TCP/IP tab of the Network panel shows the TCP/IP settings for the SpeedTouch™ network connection:

Make sure *Using PPP* is selected in the Configure list.

- 4 Click the *PPP* tab to view the PPP configuration:

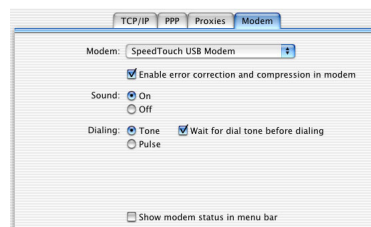


Enter your Account Name and Password in the appropriate fields.

Note Select *Save password* in case you want the computer to remember the password for this account name.


Optionally you can enter a name for this connection in the *Service Provider* field. All other fields may stay empty

- 5 Click the *Proxies* tab to view the proxy settings. By default all fields are empty, i.e. no proxies are used. As this suits the required SpeedTouch™ configuration, no changes are needed in this panel.
- 6 Click the *Modem* tab. This panel shows the modem configuration:



Select SpeedTouch™ USB Modem in the Modem list and leave the other modem settings unchanged.

- 7 Run through all panels again to check whether all configurations are correctly done as described above and click *Apply Now* to apply the settings.

Note To prevent further changes you can click  to secure your settings. From then on changes are only possible after providing the Administrator password.

As a result your SpeedTouch™ connection is installed and ready for use. The SpeedTouch™ is now prepared for connecting you to the Internet (See “3 SpeedTouch™ Internet Connectivity” on page 27).

3 SpeedTouch™ Internet Connectivity

Introduction

The SpeedTouch™ supports two connection protocol models:

- A PPP (PPPoE or PPPoA) connection
See “3.1 Internet Sessions via a PPP Connection” on page 28 for more information.
- An RFC1483 Bridged connection
See “3.2 Internet Sessions via an RFC1483 Bridged Connection” on page 35 for more information.

The connection protocol model depends on the selected connection profile during the installation process and should correspond with the ISP's requirements.

3.1 Internet Sessions via a PPP Connection

Introduction The SpeedTouch™ supports both most popular connection methods:

- PPP over ATM (PPPoA)
- PPP over Ethernet (PPPoE)

The connection method depends on the selected local setting during the installation process and should correspond with the ISP's requirements.

3.1.1 PPP Sessions for Windows

Starting a PPP session

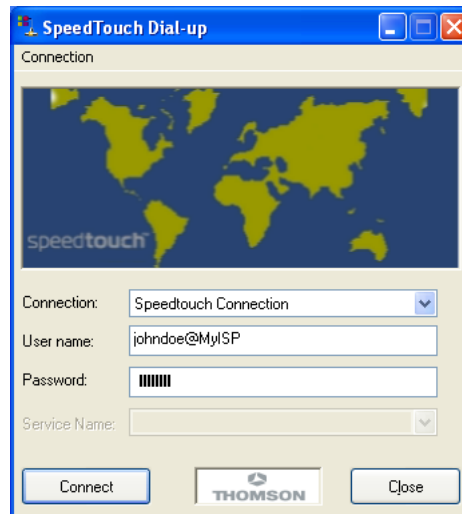
Proceed as follows:

- 1 Double-click the SpeedTouch™ *Dial-up* icon on your desktop:



Note You can also access the SpeedTouch™ Dial-up application via Start > (All) Programs > SpeedTouch™ USB > SpeedTouch™ Dial-up.

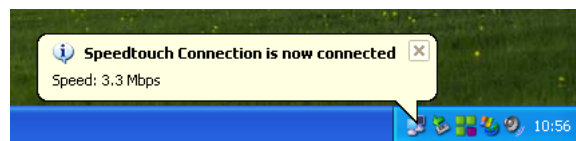
- 2 As a result the SpeedTouch™ Dial-up window appears:



- 3 Enter user name and password for your user account at the Service Provider.

Note In case of PPPoE connectivity, you may need to enter a Service Name. If so, it will be provided by your Service Provider.

- 4 Click *Connect*.
- 5 As soon as the connection is established, the connection message box and dial-up window are minimized into a DUN icon in the system tray:



You can open your web browser and surf the Internet.

Network connection icon on the status area

While you are connected, you can find the network connection icon showing two PCs connected to each other in the system tray's status area:



The network connection icon itself symbolizes activity on the connection:

- A flashing “Front” PC symbolizes upstream (T_X) link activity (from your local PC towards the remote device).
- A flashing “Behind” PC symbolizes downstream (R_X) link activity (from the remote device towards your PC).

If you move the mouse pointer over the network connection icon, a dialog box appears.

Terminating a PPP session

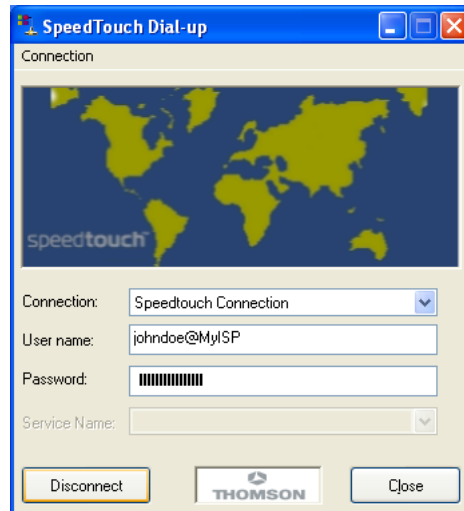
To disconnect from the Internet proceed as follows:

- 1 Double-click the SpeedTouch™ Dial-up icon on your desktop:



Or open the SpeedTouch™ Dial-up window via Start > (All) Programs > Speed-Touch™ USB > SpeedTouch™ Dial-up.

- 2 The SpeedTouch™ Dial-up window appears:



Click *Disconnect*.

The connection is released. As a result no Internet connectivity exists anymore.

Configuring multiple entries

In case you have more than one account, and/or multiple SpeedTouch™ devices connected to your PC, you can create multiple Dial-Up Networking (DUN) entries for the SpeedTouch™, with specific credentials, properties and home web page.

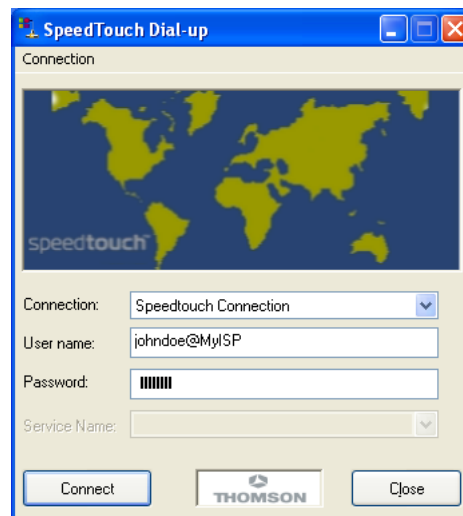
To add a DUN entry proceed as follows:

- 1 Double-click the SpeedTouch™ *Dial-up* icon on your desktop:

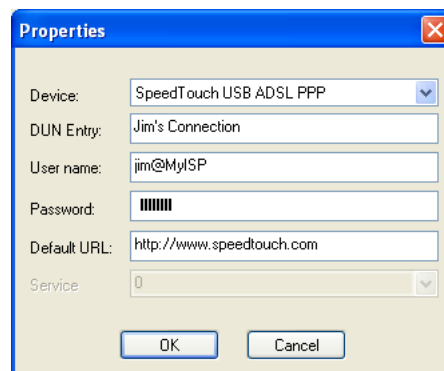


Or open the SpeedTouch™ Dial-up window via Start > (All) Programs > Speed-Touch™ USB > SpeedTouch™ Dial-up.

- 2 As a result the SpeedTouch™ Dial-up window appears:



- 3 On the *Connection* menu, click *Add*.
- 4 The Properties window appears:



Enter the required information in the corresponding fields and click *OK*.

As a result the new DUN entry is listed in the Connection list in the SpeedTouch™ Dial-up window.

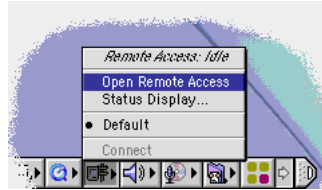
3.1.2 PPPoA Sessions for Mac OS 8.6 and 9.x

Note For PPPoE session connectivity, see “3.2 Internet Sessions via an RFC1483 Bridged Connection” on page 35.

Starting a PPPoA session

Proceed as follows:

- 1 In the control strip, click the *Remote Access* icon and select *Open Remote Access*:



- 2 As a result the Remote Access window appears:



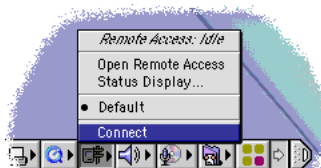
- 3 Enter user name and password for your user account at the Service Provider.

Note Select *Save password* in case you want the application to remember your (user) name, and password.

- 4 Enter a digit, e.g. 0, into the *Number* field.
- 5 Click *Connect*.

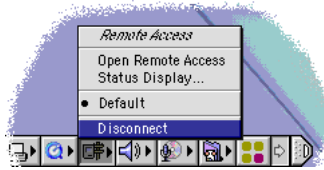
As soon as the connection is established you can open your web browser and surf the Internet.

Note In case you selected *Save password*, the next time, you can open a connection by simply clicking the *Remote Access* icon in the control strip, and selecting *Connect*:



Terminating a PPPoA session

To release a remote access connection, click the *Remote Access* icon in the control strip, and select *Disconnect*:



As a result the connection is released. No Internet connectivity exists anymore.

3.1.3 PPP Sessions for Mac OS X

Starting a PPP connection

Proceed as follows:

- 1 Click the *Internet Connect* dockling.

Note If the Internet Connect dockling is not available, go to the Applications folder on the system startup disk and double-click *Internet Connect*.

- 2 The following window appears:



Make sure SpeedTouch™ USB is selected in the *Configuration* list.

- 3 Enter user name and password for your user account at the Service Provider.
- 4 Click *Connect*.

As soon as the connection is established you can open your web browser and surf the Internet.

Terminating a PPP connection

Proceed as follows:

- 1 Click the *Internet Connect* dockling.

Note If the Internet Connect dockling is not available, go to the Applications folder on the system startup disk and double-click *Internet Connect*.

- 2 The following window appears:



Make sure SpeedTouch™ USB is selected in the *Configuration* list.

- 3 Click *Disconnect*.

The connection is released. As a result no Internet connectivity exists anymore.

3.2 Internet Sessions via an RFC1483 Bridged Connection

-
- Connectivity** The RFC1483 Bridged connection offers two connectivity scenarios:
- **IEEE802.1D Transparent Bridging**
This connection provides instant access without the need of “opening” a connection. Although not required for making a physical connection to your Service Provider, you may have to enter your credentials (user name and password) via an ISP logon web page.
 - **Bridged PPPoE (via a PPPoE session client)**
This connection scenario provides PPP-like dial-in behavior over the virtual Ethernet segment.

-
- Dial-in clients** In case of Bridged PPPoE you can use:
- A Windows XP dial-in client to connect to the Internet.
See “3.2.1 Using the Windows XP Dial-in Client.” on page 36 for more information.
 - A Mac OS X dial-in client to connect to the Internet.
See “3.2.2 Using the Mac OS X Dial-in Client” on page 40 for more information.
- or -
- A broadband dial-in client provided by your Service Provider to connect to the Internet
- Note** Required for PPPoE session connectivity in case of Mac 8.6/9.x..

3.2.1 Using the Windows XP Dial-in Client.

Configuring a dial-in connection on a Windows XP platform

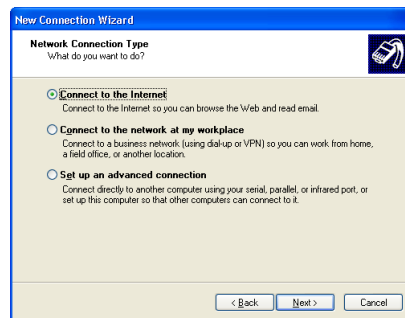
To create a new dial-in connection proceed as follows:

- 1 On the *Start* menu, click (Settings >) *Control Panel*.
- 2 The *Control Panel* window appears. Go to (*Network and Internet Connections* >) *Network Connections*.
- 3 In the *Network Tasks* menu, click *Create a new connection*. The *New Connection Wizard* appears:



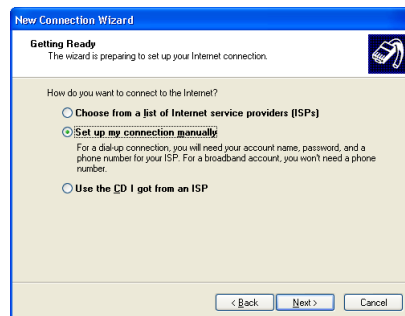
Click *Next* to continue.

- 4 In the next window, select *Connect to the Internet*:



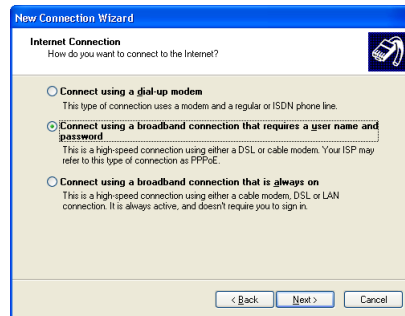
Click *Next* to continue.

- 5 In the next window, select *Set up my connection manually*.



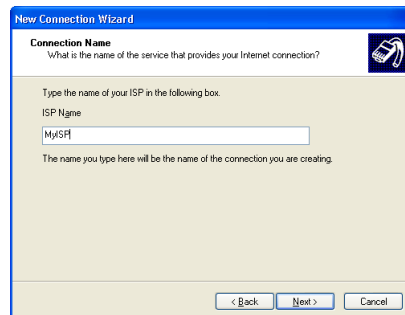
Click *Next* to continue.

- 6 In the next window, select *Connect using a broadband connection that requires a user name and password*:

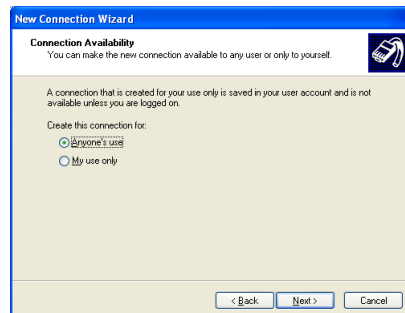


Click *Next* to continue.

- 7 In the next window, give a name to the connection you are creating, e.g. MyISP:



- 8 In the next window, select whether the connection is available to any user or only to yourself:



Note If you want to share this connection with other users you must select *Anyone's use*.

- 9 In the next window, fill in the Internet account information. This information should be provided by your service provider:



10 At the end of the configuration the following window appears:



Click *Finish* to complete the configuration.
The Connect MyISP window (see below) appears.

Starting a dial-in Internet session from Windows XP

To connect to the Internet proceed as follows:

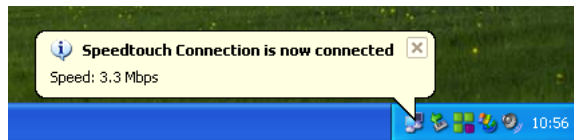
- 1 On the *Start* menu, point *Connect To* and click the name of the connection you've created e.g. MyISP.

Note If you are using the classic Start menu click *Start > Settings > Network (and Dial-up) connections > MyISP*.

- 2 The Connect MyISP window appears:



- 3 Enter user name and password if needed.
- 4 Click *Connect*.
- 5 As soon as the connection is established, the connection message box and dial-up window are minimized into a DUN icon in the system tray:



You can open your web browser and surf the Internet.

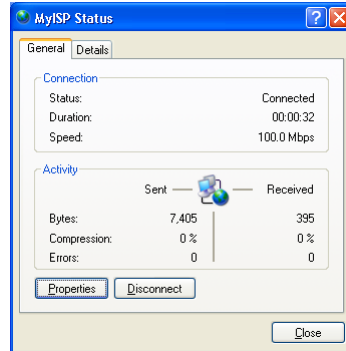
Closing a dial-in Internet session from Windows XP

To disconnect from the Internet proceed as follows:

- 1 On the *Start* menu, point *Connect To* and click the name of the connection you've created e.g. MyISP.

Note If you are using the classic Start menu go to *Start > Settings > Network (and Dial-up) connections > MyISP*.

- 2 The MyISP Status window appears:



- 3 Click *Disconnect*.

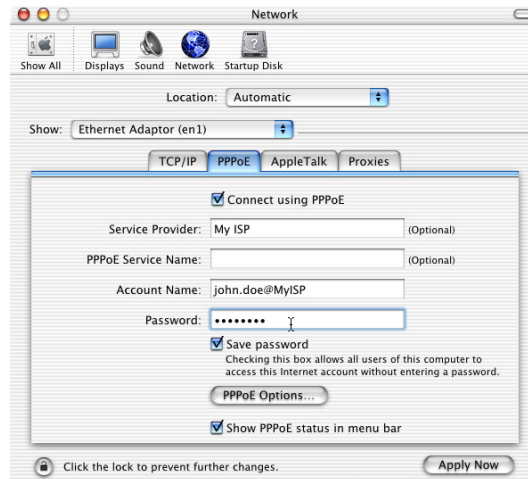
The connection is released. As a result no Internet connectivity exists anymore.

3.2.2 Using the Mac OS X Dial-in Client

Configuring a dial-in connection on a Mac OS X platform

To create a dial-in connection proceed as follows:

- 1 On the Apple menu, click *System Preferences*.
- 2 The System Preferences window appears. Click the *Network* icon.
- 3 The Network window appears. Make sure *Ethernet Adaptor (enx)* is selected in the Show list and click the PPPoE tab:

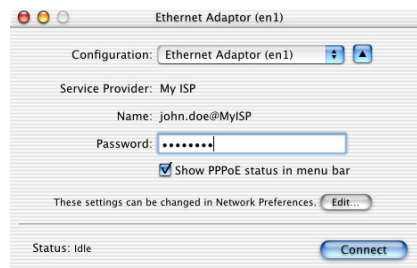


- 4 Enter the Account Name and Password provided by your Service Provider and Click *Apply Now*.

Starting a dial-in connection on a Mac OS X platform

To connect to the internet proceed as follows:

- 1 Click the *Internet Connect* dockling.
Note If the Internet Connect dockling is not available, go to the Applications folder on the system startup disk and double-click *Internet Connect*.
- 2 The following window appears:



Make sure *Ethernet Adaptor (enx)* is selected in the Configuration list.

- 3 Enter user name and password if needed.
- 4 Click *Connect*.

As soon as the connection is established you can open your web browser and surf the Internet.

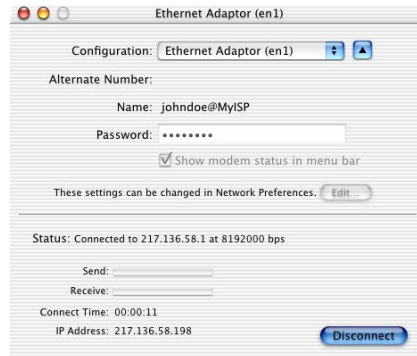
Closing a dial-in connection on a Mac OS X platform

To close an opened Internet session proceed as follows:

- 1 Click the *Internet Connect* dockling.

Note If the Internet Connect dockling is not available, go to the Applications folder on the system startup disk and double-click *Internet Connect*.

- 2 The following window appears:



Make sure *Ethernet Adaptor (enx)* is selected in the Configuration list

- 3 Click *Disconnect*.

The connection is released. As a result no Internet connectivity exists anymore.

4 SpeedTouch™ Diagnostics

Introduction This section describes the SpeedTouch™ Diagnostics tool.

This Diagnostics tool is installed during the installation of the SpeedTouch™ drivers and allows you to view specific information on the various layers the SpeedTouch™ uses to transmit or receive information over the Asymmetric Digital Subscriber Line (ADSL) link.

4.1 The SpeedTouch™ Status Icon







SpeedTouch™ Status Icon

As soon as your SpeedTouch™ is installed, a SpeedTouch™ status icon is displayed:

- For Windows OSs the SpeedTouch™ status icon is found on the status area.
- For Mac OS8.6/9.x the SpeedTouch™ status icon is found in the control strip.
- For Mac OS10.x the SpeedTouch™ status icon is found in the dock.

SpeedTouch™ status icon colors

The SpeedTouch™ status icon is colored, depending on the state of the SpeedTouch™:

Status icon		Description
Windows Mac OS8.6/9.x	Mac OS10.x	
		The SpeedTouch™ is not plugged into the computer's USB port.
		The SpeedTouch™ is not functioning.
		The SpeedTouch™ is not installed correctly.
		The SpeedTouch™ is plugged in, but has not (yet) accomplished synchronization over the ADSL line.
		The SpeedTouch™ is connected, and synchronized.

If your SpeedTouch™ connection is not functioning correctly see [“5 Troubleshooting”](#) on page 53 for more information.

4.2 The Diagnostics Application

Introduction The Diagnostics application allows you to overview specific information on the various layers the SpeedTouch™ uses to transmit or receive information over the Asymmetric Digital Subscriber Line (ADSL) link.

4.2.1 The Diagnostics Application for Windows

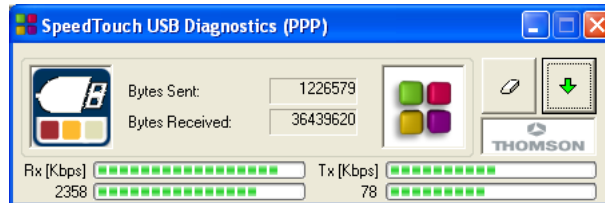
Opening the Diagnostics window

Double-click the SpeedTouch™ Status icon in the status area to open the Speed-Touch™ Diagnostics window.

Note You can also access the SpeedTouch™ Diagnostics via Start > (All) Programs > SpeedTouch™ USB > SpeedTouch™ USB Diagnostics.

Diagnostics window

Opening the SpeedTouch™ Diagnostics, pops up the following window:



Note In the example the Diagnostics window applies to a PPP (PPPoA or PPPoE) installation. For an RFC1483 installation the title bar will mention RFC1483.

Left box figures

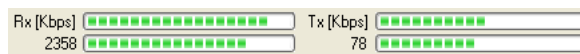
In the left box, the following figures can be displayed:

Figure	Indicator	Description
	Flashing red square	Your SpeedTouch™ is not (properly) connected to your PC, or malfunctioning. Note To solve the problem, (re)connect your Speed-Touch™ to the PC.
	Flashing yellow square	Your SpeedTouch™ is connected to your PC, and the modem software is loaded, but your ADSL link is not synchronized (yet).
	Flashing green square	Your SpeedTouch™ has established ADSL link synchronization.

Basic data In case the SpeedTouch™ has established ADSL line synchronization, the following data are displayed:

Data	Description
Bytes Sent	Shows the total number of sent bytes since ADSL link synchronization.
Bytes Received	Shows the total number of received bytes since ADSL link synchronization.

Throughput bars The throughput bars allow an instant overview of the current and average performance of the connection:



The following throughput indicators can be found:

Indicator	Description
<p>Rx [Kbps] 2358</p>	<p>Actual Receive rate: Visualizes the current rate of received Kb/s.</p> <p>Average Receive rate: Visualizes and indicates the average rate of received Kb/s.</p>
<p>Tx [Kbps] 78</p>	<p>Actual Transmit rate: Visualizes the current rate of transmitted Kb/s.</p> <p>Average Receive rate: Visualizes and indicates the average rate of transmitted Kb/s.</p>

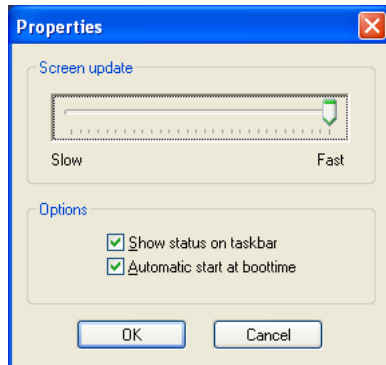
All throughput indicators are measured relatively to the actual available bandwidth. You can change the refresh rate via the [Properties menu](#).

Diagnostics buttons The following buttons are available:

Button	Functionality
	To reset all diagnostical data. This is used to start a new reading of data.
	Show detailed diagnostics.
	Close detailed diagnostics.

Properties menu

Left-click the upper-left corner of the SpeedTouch™ USB Diagnostics window or right-click the SpeedTouch™ status icon and click *Properties* to open the Properties window:



Properties options

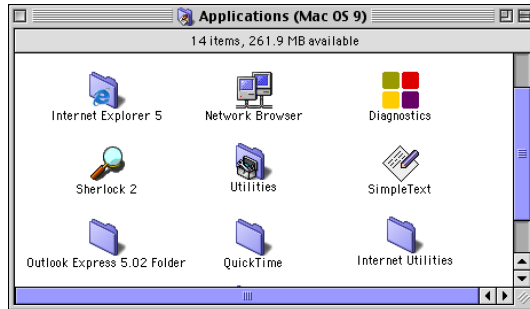
Following Property options are available:

Field	Description
Screen update	Allows to set the update rate of the information displayed in the Diagnostics windows The refresh rate is free selectable from 0.5 seconds (fast) up to 15 seconds.
Automatic start at boottime	Allows to choose whether the Diagnostics application should be started at boottime or not. By default the application is started.
Show status on taskbar	Defines whether the SpeedTouch™ status icon should be enabled in the system tray or not.

4.2.2 The Diagnostics Application for Mac OS 8.6/9.x

Opening the Diagnostics window

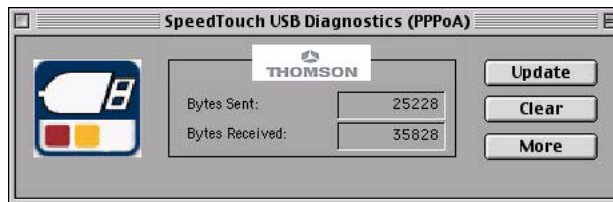
Open the *Applications* folder on your system startup disk:



Open the SpeedTouch™ Diagnostics by double-clicking the *Diagnostics* icon.

Diagnostics window




Opening the SpeedTouch™ Diagnostics, pops up the following window:



Note In the example the Diagnostics window applies to a PPPoA installation. For an RFC1483 installation the title bar will mention RFC1483.

Left box figures





In the left box, the following figures can be displayed:

Figure	Indicator	Description
	Flashing red square	Your SpeedTouch™ is not (properly) connected to your computer, or malfunctioning. Note To solve the problem, (re)connect your Speed-Touch™ to the computer.
	Flashing yellow square	Your SpeedTouch™ is connected to your computer, and the modem software is loaded, but your ADSL link is not synchronized (yet).
	Flashing green square	Your SpeedTouch™ has established ADSL link synchronization.

Basic data In case the SpeedTouch™ has established ADSL line synchronization, the following data are displayed:

Data	Description
Bytes Sent	Shows the total number of sent bytes since ADSL link synchronization.
Bytes Received	Shows the total number of received bytes since ADSL link synchronization.

Diagnostics buttons The following buttons are available:

Button	Functionality
	To update all diagnostical data.
	To reset all diagnostical data. This is used to start a new reading of data.
	Show detailed diagnostics.
	Close detailed diagnostics.

4.2.3 The Diagnostics Application for Mac OS 10.x

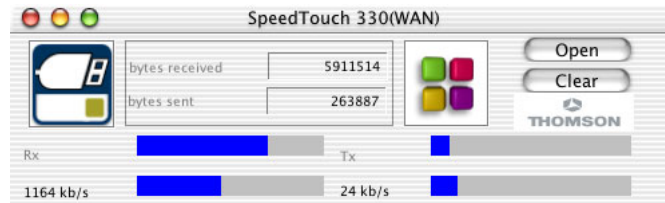
Opening the Diagnostics window

Click the SpeedTouch™ status docking to open the SpeedTouch™ Diagnostics window.

Note You can also go to Applications > SpeedTouch™ > USB and double-click Diagnostics.

Diagnostics window




Opening the SpeedTouch™ Diagnostics, pops up the following generic window:



Note In the example the Diagnostics window applies to a PPP (PPPoA or PPPoE) installation. For an RFC1483 installation the title bar will mention LAN.

Left box figures

In the left box, the following figures can be displayed:

Figure	Indicator	Description
	Flashing red square	Your SpeedTouch™ is not (properly) connected to your computer, or malfunctioning. Note To solve the problem, (re)connect your SpeedTouch™ to the computer.
	Flashing yellow square	Your SpeedTouch™ is connected to your computer, and the modem software is loaded, but your ADSL link is not synchronized (yet).
	Flashing green square	Your SpeedTouch™ has established ADSL link synchronization.

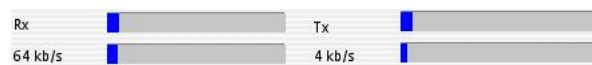
Basic data

In case the SpeedTouch™ has established ADSL line synchronization, the following data are displayed:

Data	Description
Bytes Sent	Shows the total number of sent bytes since ADSL link synchronization.
Bytes Received	Shows the total number of received bytes since ADSL link synchronization.

Throughput bars

The throughput bars allow an instant overview of the current and average performance of the connection:



The following throughput indicators can be found:

Data	Description
<p>Rx 64 kb/s</p>	<p>Actual Receive rate: Visualizes the current rate of received Kb/s. Average Receive rate: Visualizes and indicates the average rate of received Kb/s.</p>
<p>Tx 4 kb/s</p>	<p>Actual Transmit rate: Visualizes the current rate of transmitted Kb/s. Average Receive rate: Visualizes and indicates the average rate of transmitted Kb/s.</p>

All throughput indicators are measured relatively to the actual available bandwidth.

Diagnostics buttons

The following buttons are available:

Button	Functionality
	To reset all diagnostical data. This is used to start a new reading of data.
	Show detailed diagnostics.
	Close detailed diagnostics.

5 Troubleshooting

Introduction This chapter provides information on how to identify and correct some common problems you may encounter when using the SpeedTouch™.

If the following troubleshooting tips do not resolve the problem contact the company from which you purchased the SpeedTouch™ for assistance.

5.1 General

Solving problems

In most cases the described solutions will solve the problem.

However, if the problem keeps persistent, reinstallation of your SpeedTouch™ might solve the problem.

If reinstallation has not resolved the problem, contact the company from which you purchased the SpeedTouch™ for assistance.

Dr SpeedTouch™

Dr SpeedTouch™ enables you to test your computer and SpeedTouch™ connectivity via its Diagnostics wizard. The SpeedTouch™ Troubleshoot will report what is wrong with your connection.

For more information about installing and using Dr SpeedTouch™, see “2.1.2 Dr SpeedTouch™” on page 15.

SpeedTouch™ Diagnostics

The Diagnostics tool is installed during the installation of the SpeedTouch™ drivers and allows you to view specific information on the various layers the SpeedTouch™ uses to transmit or receive information over the Asymmetric Digital Subscriber Line (ADSL) link.

See “4 SpeedTouch™ Diagnostics” on page 43 for more information.

SpeedTouch™ LEDs

Your SpeedTouch™ is equipped with two LEDs. These indicators indicate the status of the SpeedTouch™. Checking the SpeedTouch™ status may be a first step in isolating the problem.

Start-up phases

At startup, the SpeedTouch™ passes three phases:

Phase	USB LED		ADSL LED		Description
	Color	Timing	Color	Timing	
Attaching and Configuring	Red	Flashing, very short time	Off	—	The SpeedTouch™ is attached.
	Green	Solid, 2 seconds	Green	Solid, 2 seconds	Ready to continue.
Downloading	Green	Flashing, 1 to 10 seconds	Off	—	Downloading driver software from computer.
		Solid	Green	Solid	Download successful.
Connecting to ADSL	Green	Solid	Green	Flashing	Pending ADSL line synchronization.
				Solid	Ready for connectivity.

Normal operation during a session

In this state the USB LED is assigned to the downstream (R_X) data channel (towards the USB connection).

The ADSL LED is assigned to the upstream (T_X) data channel (towards the ADSL channel).

Both LEDs stay green. When an ATM cell is processed in a channel, the associated LED will go off for a short time.

Troubleshooting table

Following table may help you determine the nature of the problem, and provide some plausible solutions:

Problem	Solution
SpeedTouch™ does not work. (none of the LEDs light up)	Verify the SpeedTouch™ connections.
	Check if the SpeedTouch™'s cord is damaged in any way.
	When using a portable computer in battery mode, it is possible that its USB port is not powered. Refer to the portable's User's Guide for more information.
	Check if the SpeedTouch™ is not connected to a low- or non-powered USB hub port. Refer to the USB hub's User' Guide for more information.
Speed Touch™ USB driver installation failed.	Verify your computer is running one of the supported OSs and that it meets the according minimum requirements.
	Check whether the SpeedTouch™ is not connected to a low-powered USB hub port. Refer to the USB hub User's Guide for more information.
USB LED flashes red, or stays solid red.	Your USB port congests, meaning that too much traffic is passing through it. Avoid using multiple high speed USB devices, e.g. scanners, speaker, etc. during heavy duty, e.g. a data download.
USB LED is solid amber and ADSL LED is solid green.	Power On Self Test (POST) failed. Check whether the connections are correctly made.

5.2 Removing a SpeedTouch™ Driver Installation

Introduction This section describes how to remove the SpeedTouch™ drivers from your system, if your computers runs:

- **Microsoft Windows**
Proceed with “5.2.1 Removing a SpeedTouch™ Driver Installation from a Windows Operating System” on page 57.
- **Mac OS8.6/9.x**
Proceed with “5.2.2 Removing a SpeedTouch™ Driver Installation from Mac OS 8.6/9.x” on page 58.
- **Mac OS10.x platform**
Proceed with “5.2.3 Removing a SpeedTouch™ Driver Installation from Mac OS 10.x” on page 59.

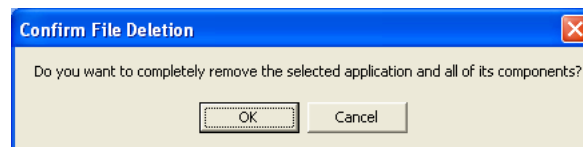
5.2.1 Removing a SpeedTouch™ Driver Installation from a Windows Operating System

Procedure If a removal of the SpeedTouch™ driver is required, proceed as follows:

- 1 Insert the SpeedTouch™ Setup CD-ROM in your PC's CD-ROM drive. The SpeedTouch™ CD Browser will start automatically. Choose your language and go to Install SpeedTouch™ USB/330 Software > Remove USB Software

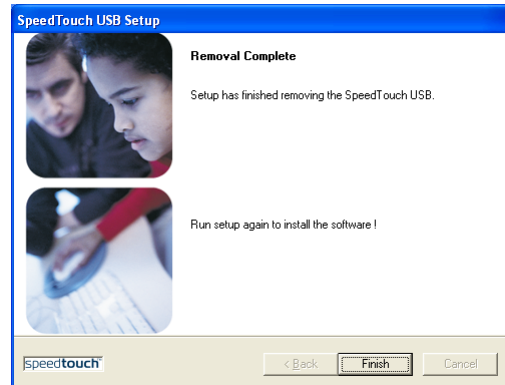
Note If the SpeedTouch™ CD Browser does not appear automatically, open a Run window via Start > Run from the Start menu and enter the following path: D:\menu.exe, where D stands for the drive letter of your CD-ROM drive.

- 2 A message box prompts you to confirm the removal:



Click *OK* to continue.

- 3 The SpeedTouch™ USB Setup wizard removes the necessary file from your computer:
- 4 At the end of the procedure the following window announces that the removal was successful

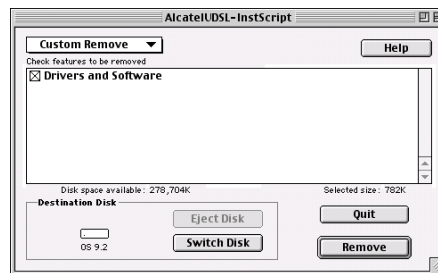


Click *Finish* to quit the wizard

5.2.2 Removing a SpeedTouch™ Driver Installation from Mac OS 8.6/9.x

Procedure In case a removal of the SpeedTouch™ driver is required, proceed as follows:

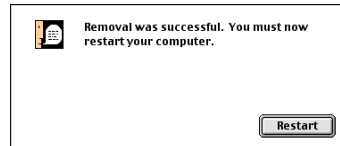
- 1 Insert the SpeedTouch™ Setup CD-ROM in your computer's CD-ROM drive and open the OS9 folder.
- 2 Open the Remove folder and double-click *Installer*.
- 3 The Installer window appears:



Click *Custom Remove* in the drop-down list box, select the *Drivers and Software* check box and click *Switch Disk* to select the disk where the USB drivers were installed to.

Click *Remove* to Continue.

- 4 The Installer removes the driver from your computer.
- 5 At the end of the procedure, the Installer asks you to restart your computer:

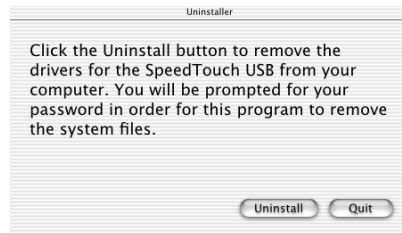


Click *Restart* to complete the removal.

5.2.3 Removing a SpeedTouch™ Driver Installation from Mac OS 10.x

Procedure In case a removal of the SpeedTouch™ driver is required, proceed as follows:

- 1 Go to Applications > SpeedTouch™ > USB and double-click *SpeedTouchUSBUninstaller*.
- 2 The Uninstaller window appears:



Click *Uninstall* to continue.

- 3 The Uninstaller prompts you to confirm your choice:



Click *OK* to start removing the files.

Note The Uninstaller may ask you to enter an administrator name and password or phrase.

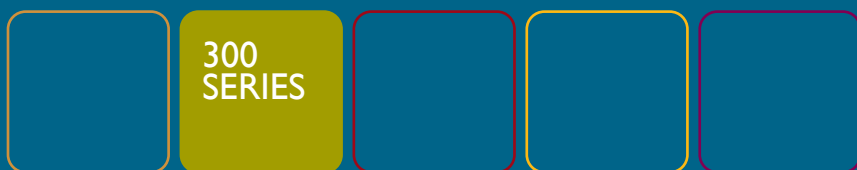
- 4 The following window appears:



Click *OK* to quit the Uninstaller.



www.speedtouch.com



Built for excellence

speedtouch™