



Record Future Programs

SETTING UP AND USING TIMERS

Have you found yourself having to make a choice between watching your favourite show and living your life away from television? Here's some news for you: the days of rushing home to watch TV are over. Use the information in this chapter to set up to record future programs so that you'll never miss your favourite shows.

- **TIMERS AND RECORDINGS**
- **USING THE TIMERS LIST**
- **USING THE DAILY SCHEDULE**
- **SETTING UP AN AUTOMATIC TIMER**
- **SETTING UP A MANUAL TIMER**
- **SETTING UP A VU PASS TIMER**
- **DELETING A TIMER**

User Guide

TIMERS AND RECORDINGS

A timer is your instruction telling the satellite receiver the programs you want to view in the future. For most Personal Video Recorder (PVR) timers, you select a specific program on a specific channel, and tell the satellite receiver how often you want to record that program.

A recording is the actual program stored for you to watch. PVR recordings are listed in the My Recordings screen, which you can find quickly by pressing PVR on the remote control.

TIMER TYPES

There are three types of timers:

- **PVR** - Records an event onto your receiver for later viewing.
- **Auto** - Automatically changes the channel for live viewing of the event.
- **Reminder** - Creates an on-screen reminder when the event is about to air.

TIMER FREQUENCY

Deciding how often you want to watch a program will help you make the best choice:

- **All Episodes** - Records each time that program is on that channel.
- **New Episodes** - Records current season programs each time they occur on that channel.
- **Once** - Records a program once (good for movies, sporting events, etc.).
- **Weekly** - Records a program once a week, at that time, on that channel.
- **Daily** - Records a program once a day, at that time, on that channel.
- **Monday-Friday** - Records a program once a day, Monday through Friday, at the selected time, on that channel.
- **Vu Pass** - Records programs on all channels (default) or a specific channel, based on your specific criteria. See page 9-8 for details.

TIMER PRIORITIES

Priorities are used by the receiver to know which program you would prefer to record, if multiple timers are scheduled to start at the same time. For example, having six programs scheduled to record at the same time cannot be done on a dual-tuner receiver; therefore, the receiver will record only the two programs with the highest priorities.

- All timers have a priority that you can change at any time.
- The larger the number, the lower priority (for example, priority 1 is higher than priorities 2, 3, and 4).
- You can override a specific timer's priority with a one-time skip or by restoring it. Select a timer in the Daily Schedule, then you'll have an option to Skip or Restore for that timer (see page 9-5).

Record Future Programs Timers And Recordings



TIMER OPTIONS

The Timer Options screen lets you set the following (not used on all options screens):

- **Protect Event** - Prevents your programs from being erased when the receiver fills up.
- **Set Channel** - Select a specific channel.
- **Start Early** - Select this option if you want to begin recording a few minutes early.
- **End Late** - Select this option if you want to continue recording after the scheduled program ending.

TIMERS LIST

Use the Timers List as described on page 9-5 to:

- View the general list of timers.
- If you select a timer from this list, you'll see a detailed list with specific dates and times of upcoming timers for that program or Vu Pass search term(s).
- Set user-selected priorities for each timer. See *Timer Priorities* in the previous section.
- Create a Manual timer.
- Create a Vu Pass timer.
- Select Edit List to edit a timer.

DAILY SCHEDULE

The Daily Schedule lists the timers that are planned for today, the future and those that occurred in the recent past. Use the Daily Schedule as described on page 9-5 to:

- Review today's timers. You can choose to skip a scheduled timer, or restore a timer that was not planned to occur, perhaps because of a conflict with another program. See *Timer Priorities*.
- Review future timers and make changes as necessary.
- Review past timers to see which occurred, and the reason why one did not, if applicable. See *Reasons Why Timers Are Skipped*.

User Guide

REASONS WHY TIMERS ARE SKIPPED

If a timer is skipped, the reason is stated on the Timers List.

- **Priority** - This timer had a lower priority than other events being recorded at the time
- **User** - A user chose to skip that timer.
- **Duplicate event** - There is already another timer set to record that program.
- **Event exists in PVR** - The program was already recorded and can be seen in the Daily Schedule list.
- **Not a new episode** - Used for New Episode timers. Currently, a New Episode is one that has the current year listed in the Program Guide info.
- **Incorrect event** - For Weekly, Daily and Monday-Friday timers. If the guide has a different event listed the timer will be skipped. For example, the timer was set up on a Saturday for Daily, but the program is broadcast only Monday-Friday, so the timer will be skipped on the weekends.

WHEN A TIMER STARTS A RECORDING

For two minutes before an timer starts a recording, the receiver may display a digital countdown on the TV screen. This symbol disappears when the program begins. While the symbol is displayed, you can do one of the following:



- Press CANCEL to clear the symbol from the TV screen. This does not stop the timer from starting.
- Press INFO or SELECT to see more information on the timer. If you do this, you have the following choices:
 - Select OK to continue with the timer.
 - Select Stop Timer to stop the timer.

Note: Pressing Info about a timer event only works one time. Subsequently pressing INFO results in the current program's information being displayed in the normal way.

WHEN THE RECEIVER IS OFF

If the receiver is off when a timer is scheduled, the receiver will:

- **PVR** - Remain off but will record the scheduled event.
- **Auto** - Turn on for the event.
- **Reminder** - Turn on at the scheduled time. After a period of time, if you do nothing, the receiver will turn OFF.

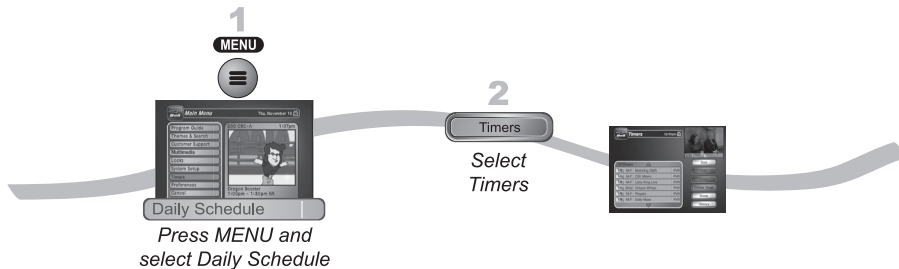
Record Future Programs Using The Timers List

9

SPECIAL CONSIDERATIONS WHEN USING TIMERS

- **For Locked Programs** - You must enter the receiver password before you can create an automatic timer. You can create a manual timer for a locked program without entering the password. However, if you do this, when the timer operates the receiver may display only an error or password entry menu.
- **For Pay-Per-View Programs** - You must order a Pay-Per-View program when you create a timer for it.
- **For Blacked Out Programs** - If you set a timer for a program that is blacked out in your area, when the timer operates the receiver may display only an error.

USING THE TIMERS LIST



USING THE DAILY SCHEDULE

Use the Daily Schedule to plan and manage your timers.



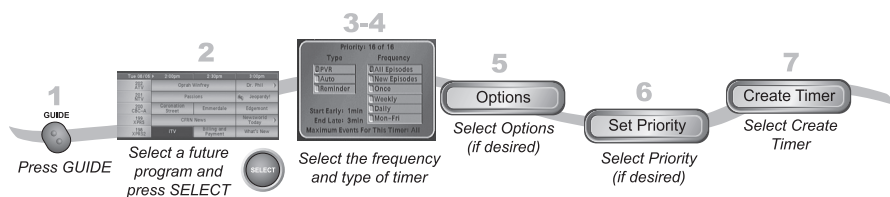
Use the ARROWS to select a future program if you want to Skip or Restore a timer. You can also choose to Protect it, or view the start early/end late settings.

User Guide

- To change the start early/end late setting, select the event within the Timers List.
- If the program is a Vu Pass timer, you cannot change the start early or end late times on an individual program; it must be changed on the Vu Pass timer, from the Timers List.
- Press PAGE UP to see the previous days' timers. Review these timers if you want to see the result of your timers (for example, if it recorded successfully or why it might have been skipped).

SETTING UP AN AUTOMATIC TIMER

You can create an automatic timer for a future event. The following instructions explain the simplest way to set up an automatic timer.



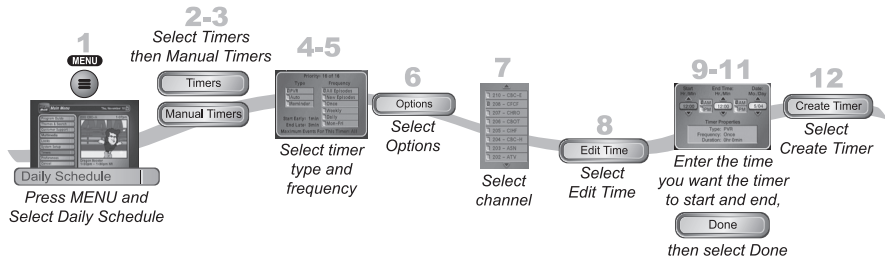
1. Find the program that starts in the future to record using the Program Guide or Browse Banner. The program can be a satellite or off-air program (see page 12-13 for instructions on connecting an off-air antenna to your receiver).
2. Select the future event. The Create Timer screen displays.
3. Select the Timer Frequency (see page 9-2 for more details).
4. Select a Timer Type (see page 9-2 for more details).
5. Select Options (see page 9-3 for more details).
6. Select Set Priority if you would like to change the priority of the timer (see page 9-2 for more information).
7. Select Create Timer to finish making the new timer.

Record Future Programs Setting Up A Manual Timer

9

SETTING UP A MANUAL TIMER

A manual timer lets you set custom start and stop times for a timer.



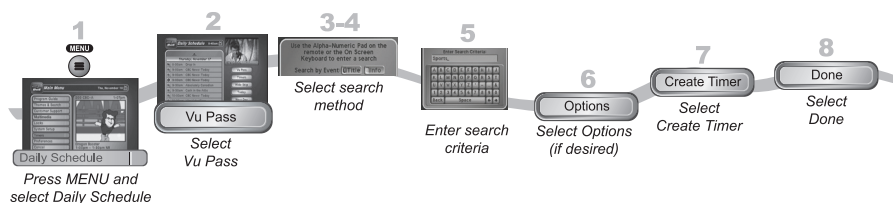
1. Press MENU and select Daily Schedule.
2. Select Timers.
3. Select Manual Timer.
4. Select the Timer Frequency (see page 9-2 for more details).
5. Select a Timer Type (see page 9-2 for more details).
6. Select Options (see page 9-3 for more details).
7. Select the channel (satellite or off-air). Use the UP/DOWN ARROWS, PAGE UP/DOWN, or NUMBER PAD to find the channel.
8. Select Edit Time.
9. Set the Start Time and End Time, include AM/PM for each.
10. Set the Date.
11. Select Done.
12. Select Create Timer.

User Guide

SETTING UP A VU PASS TIMER

Vu Pass lets you create timers to record programs automatically based on your search criteria. When the receiver finds programs that meet your search criteria, it will automatically set a timer to record that program. As the program guide is updated, Vu Pass will continue to find and record your shows based upon your search criteria. Note that Vu Pass only finds programs on satellite channels.

An example of how to use Vu Pass may be that you saw a movie in the theaters and you want to watch it again as soon as it comes out on a movie channel. Use the Exact Match and Title, and then type the exact title of the movie. If the movie is made available on a movie channel you subscribe to, the receiver will automatically set a timer to record that movie for you.



1. Press MENU and select Daily Schedule to open the Daily Schedule.
2. Select Vu Pass.
3. Select the Search Method:
 - Title - Search for programs by title.
 - Info - Search for programs whose descriptions or titles contain key words.
4. Optionally, select Exact Match if you want to find exactly what you've entered in either the program title or info, when you select the Title or Info, respectively.
5. Enter your search criteria. You can use the keyboard shown on the screen or you can use the letters above the NUMBER PAD buttons on the remote control while the highlight is in the Enter Search Criteria field. See *Using Text Fields* on page 2-14 for instructions.
6. Select Options as described on page 9-3

Record Future Programs Setting Up A Vu Pass Timer



7. Select Create Timer. When the receiver has completed your search, the Timer Schedule will display the results.

Note: After entering your search words, and selecting Create Timer, be sure to review the timers that Vu Pass creates—some may not be what you are expecting.

You can:

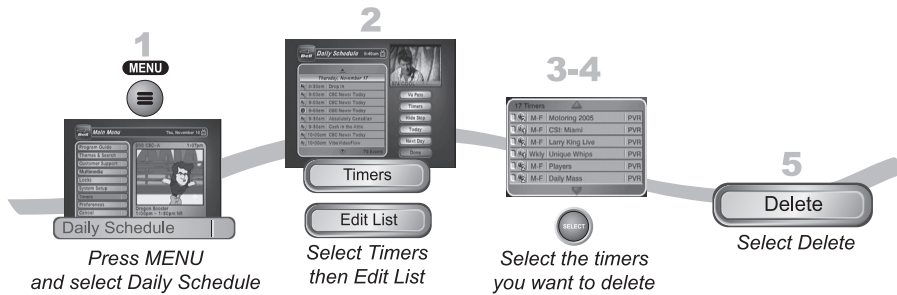
- Pick selected events to Skip. Review future timers each time the Program Guide is updated.
- Adjust your search terms and method. Select Set Priority to change the priority of your Vu Pass. To adjust your search, delete the unwanted Vu Pass timer and try the following:
 - Change your Vu Pass search term(s) to be more specific.
 - Select Exact Match with the Title or Info.
 - Choose Vu Pass when you select a future program within the Program Guide, Browse Banner or Search. This will enter the program's exact title.

8. Select Done.

User Guide

DELETING A TIMER

When you no longer need a timer, you can delete it.



1. Press **MENU** and then select **Daily Schedule** to open the **Daily Schedule** screen.
2. Select **Timers** to display the **Timers List**.
3. Select **Edit List**.
4. Select the timer or timers to delete.

Note: Select **All** to delete all of your timers.
5. Select **Delete**. The timer(s) are deleted.

Record Future Programs Tips



TIPS

- Make sure the Updates feature is enabled as described on page 11-10. By enabling this feature, the Program Guide will have the most up-to-date information, and can adjust or create timers accordingly.
- Weekly, Daily, and Monday-Friday timers move only if the program is within one hour earlier or four hours later than the original time the timer was set up. These timers will adjust their length if their program's time block is extended.
- Vu Pass recordings may fill the hard drive quickly. If you have other timers you know you don't want to be recorded over, choose Protect on those important programs.
- PVR Timers set for sporting events automatically end late by 60 minutes to allow for overtime. Change this setting in Options when you set up the timer.

QUESTIONS

- **Why is my receiver recording programs I didn't schedule?** A Vu Pass Timer may include more programs than you planned. If you'd like to refine your search, delete the Vu Pass Timer and start again as described on page 9-10.
- **Why did the receiver delete a program I recorded?** Your recording was unprotected. When the receiver fills, it writes over the oldest unprotected recording. You can protect your recordings as described on page 9-3.
- **Where can I go to find out why the receiver didn't record something I scheduled?** Look at your Daily Schedule and refer to *Reasons Why Timers are Skipped* on page 9-4.



User Guide

Notes

