

QUICK START GUIDE

SM-J337W

SAMSUNG

Printed in Korea
GH68-49490A Rev.1.0
English (CA), 07/2018



Package content

- Device
- USB power adapter
- Battery
- Quick start guide
- USB cable

The items supplied with the device may vary by region.

Accessing more information

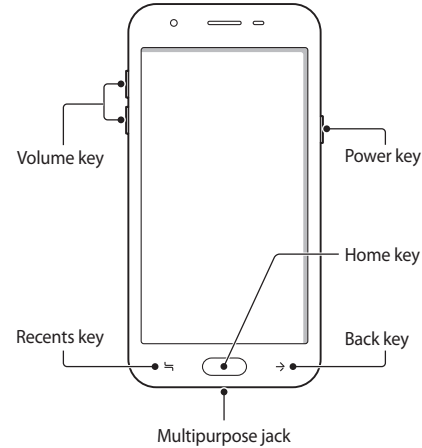
To view the full user manual on your device, launch the **Settings** app and tap **User manual**.

Visit www.samsung.com/ca to view device information, the user manual, and more.

- The user manual may not be available depending on the web browser or service provider.
- You may incur additional charges for accessing the Internet.

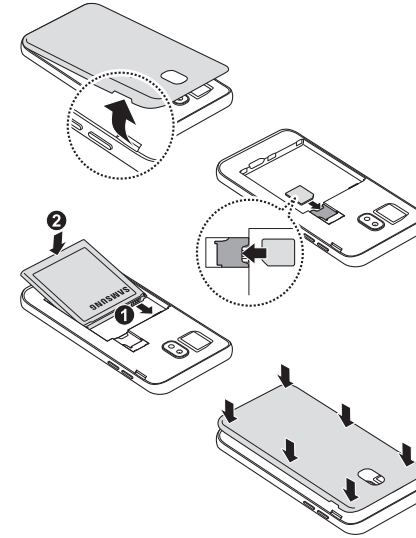
Device layout

To turn on the device, press and hold the Power key for a few seconds.



Installing the SIM or USIM card and battery

- Do not insert a memory card into the SIM card slot.
- Use only a nanoSIM card.
- NanoSIM cards are sold separately.



To transfer data of the previous device to a new device: Visit www.samsung.com/smarts witch for more information.

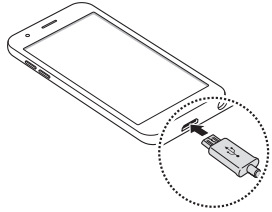
The actual available capacity of the internal memory is less than the specified capacity because part of the memory. The available capacity may change when you update the device.


Some content may differ from your device depending on the region, service provider, or software version, and is subject to change without prior notice.

Copyright © 2018 Samsung Electronics

Charging the battery

Before using the device for the first time, you must charge the battery.



 The charger should remain close to the electric socket and easily accessible while charging.

Safety information

Read all safety information before using the device to ensure safe and proper use.



Warning

Follow the warning information provided below to prevent incidents such as fire or explosion

- Do not expose the device to physical impact or damage.
- Use manufacturer-approved batteries, chargers, accessories, and supplies.
- Prevent the multipurpose jack and battery terminals from contacting conductive elements, such as metal or liquids.
- If any part of the device is cracked or broken, stop using the device immediately and take it to a Samsung Service Center.
- Do not turn on or use the device when the battery compartment is exposed.

Follow the warnings below to prevent injury to people or damage to the device

- Do not allow children or animals to chew or suck the device.
- If the device has a camera flash or light, do not use it close to the eyes of people or animals.
- The device can be used in locations with an ambient temperature of 0 °C to 35 °C. You can store the device at an ambient temperature of -20 °C to 50 °C. Using or storing the device outside of the recommended temperature ranges may damage the device or reduce the battery's lifespan.
- Do not use your device in a hot environment or near fire.
- Comply with all safety warnings and regulations regarding mobile device usage while operating a vehicle.



To prevent possible hearing damage when using a headset, do not listen to sound at high volume for long periods.

You can view more safety information, including device and battery disposal instructions, in the safety information menu of the Settings app.

You can download and install the firmware update to upgrade your device's software with the firmware over-the-air (FOTA) service. To check for the firmware update, launch the **Settings** app and tap **Software update** → **Download updates manually**.

Correct disposal

You can view more safety information, including device and battery disposal instructions, in the safety information menu of the Settings app.

This device contains a Lilon battery. For safe disposal options, contact your nearest service centre. For information on battery replacement, please contact your service provider. Do not disassemble, crush, or puncture the device. Do not dispose of it in a fire.



- Be sure to dispose of your device properly. In some areas, the disposal of batteries in household or business trash may be prohibited.
- For safety, do not handle the device if the Lilon battery is damaged or leaking.

Acknowledging Special Precautions and Industry Canada Notice

Cautions

Any changes or modifications to your phone not expressly approved by Samsung could void your warranty for this equipment, and void your authority to operate this equipment. Only use approved batteries, antennas, and chargers. The use of any unauthorized accessories may be dangerous and void the phone warranty if said accessories cause damage or a defect to the phone.

Although your phone is quite sturdy, it is a complex piece of equipment and can be broken. Avoid dropping, hitting, bending, or sitting on it.

Information to User

This equipment has been tested and found to comply with the limits of a Class B digital device. These limits are designed to provide reasonable protection against harmful interference in a residential installation. This equipment generates, uses, and can radiate radio frequency energy and, if not installed and used in accordance with the instructions, may cause harmful interference to radio communications. However, there is no guarantee that interference will not occur in a particular installation; if this equipment does cause harmful interference to radio or television reception, which can be determined by turning the equipment off and on, the user is encouraged to try to correct the interference by one or more of the following measures:

- Reorient/relocate the receiving antenna.
- Increase the separation between the equipment and receiver.
- Connect the equipment into an outlet on a circuit different from that to which the receiver is connected.
- Consult the dealer or an experienced radio/TV technician for help.

Specific Absorption Rate (SAR) certification information

Your device conforms to Industry Canada standards that limit human exposure to radio frequency (RF) energy emitted by radio and telecommunications equipment. These standards prevent the sale of mobile devices that exceed a maximum exposure level (known as the Specific Absorption Rate, or SAR) of 1.6 W/kg. SAR information on this and other model devices can be accessed online on IC's website through ic.gc.ca/eic/site/ceb-bhst.nsf/eng/h_tt00084.html.

In normal use, the actual SAR is likely to be much lower, as the device has been designed to emit only the RF energy necessary to transmit a signal to the nearest base station. By automatically emitting lower levels when possible, your device reduces your overall exposure to RF energy.

Industry Canada has granted an IC Certification Number for this model device based on the compliance of all reported SAR levels with the IC RF exposure guidelines. This device has an IC number: 649E-SMJ337W [Model Number: SM-J337W] and the specific SAR levels for this device can be found at the following Industry Canada website: sms-sgs.ic.gc.ca/equipmentSearch/searchRadioEquipments. The SAR information for this device can also be found on Samsung's website: www.samsung.com/sar.

IC Notice

This device complies with Industry Canada licence exempt RSS standard(s). Operation is subject to the following two conditions:

1. This device may not cause interference.
2. This device must accept any interference, including interference that may cause undesired operation of the device.