

USING TIMERS

Event timers let you set up the receiver to tune in future programs and/or record them on a VCR (TV1 only). An “event” is a program, sports event, pay per view movie, or anything else on satellite TV.

- You can set an automatic event timer for a program listed with start and stop times in the **Program Guide**. This can be a program that comes on each day or each week.
- A manual event timer lets you set custom start and stop times for a timer.

Note: If you want to have the **Event Timer** record to a VCR, you must set up the receiver to control the VCR (see page 3-20).

EVENT TIMER TYPES

Reminder - Reminds you that a program is about to start.

Auto-Tune - Reminds you that a program is about to start and tunes the receiver to the program when it begins.

VCR - Reminds you that a program is about to start, tunes the receiver to the program when it begins, and starts your VCR. This timer is available through TV1 menus only.

Note: You can record only the program to which the receiver is tuned. If you open any menu while recording a program on videotape, the menu also will be recorded. If a program time changes by more than twenty-four hours, the timer will not operate.

EVENT TIMER FREQUENCY

Once - Applies to a one-time program. If the program time changes, this timer operates at the new time. The receiver deletes this timer when the timer operates.

Mon.-Fri. - Applies to a program that is scheduled for Monday through Friday on the same channel at the same time each day.

Daily - Applies to a program that is scheduled for Monday through Sunday on the same channel at the same time each day.

Weekly - Applies to a program that is scheduled for once a week on the same channel at the same time on the same day.

BEFORE AN EVENT TIMER OPERATES

Two minutes before an event timer operates, the receiver displays a small clock on the TV screen. This clock disappears when the program begins. While the clock is displayed, you may do either one of the following:

- Press the Cancel button to clear the symbol from the TV screen. This does not affect the timer; it will operate.
- Press the Info button to see more information on the event timer. If you do this, you will have the following choices:
 - Select the **OK** or **Cancel** option to continue with the event timer.
 - Select the **Stop Timer** or **No** option to stop the event timer.



Note: This stops only this instance of a **Mon.-Fri.**, **Daily** or **Weekly** timer. The timer will operate the next time it is scheduled. To stop all operations of such a timer, you must delete the timer. For a **Reminder Event Timer**, instead of having the option to stop the timer, you have the option to tune to the program.

SETTING UP AN AUTOMATIC EVENT TIMER

Remote
Buttons

Menu Options

1. Select a future program using the **Browse Banner, Themes** menu or the **Program Guide**. One of the following **Create Timer** screens display:



TV1



TV2

2. Select a **Timer Frequency** option. Notice that a mark displays in the box.
3. Select a **Timer Type**. The **Create Timer** screen shown on the left is for TV1 and has a **VCR Timer Type** option. This **Timer Type** is not available for TV2 (shown on the right).
4. Select the **Create** option to save the event timer.



5. The receiver displays a timer symbol in the **Program Guide**.

SETTING UP A MANUAL EVENT TIMER

1. Press the Menu button.
2. Select the **Timers** option.
3. Select the Create option. The receiver displays the **Create a Manual Event Timer** menu.
4. Select a **Timer Type** option.

Note: VCR timers are available through TV1 menus only.

5. Select a **Timer Frequency** option.
6. Select a channel by doing one of the following:
 - Highlight a channel using the Up or Down arrow button. Then, press the Select button.
 - Enter a channel number using the number pad buttons.
7. Select the **Edit Time** option. The receiver displays the **Set Date/Time** for **Manual Timer** menu.
8. Use the number pad buttons to enter the **Start Time** (this includes selecting AM or PM) and the **End Time**, (this includes selecting AM or PM).
9. Use the number pad buttons to enter the **Date**.
10. Select the **Create Timer** option.
11. To create another event timer, do one of the following:
 - Select the **Create** option again.
 - If you do not want to create another event timer, press the Cancel button.

Note: You cannot set a manual event timer for a pay per view event.

OVERLAPPING TIMERS

If you try to create event timers for overlapping programs, the receiver displays a screen with the dates and times of both programs. The receiver also displays this screen if a program time has changed, causing one timer to overlap another. You must delete, edit, or skip one of the timers.



When the **Timer Conflict** screen displays, resolve the conflict by doing the following:

1. Select one of the timers. The **Timer Conflict Resolution** screen displays.



2. When the **Timer Conflict Resolution** displays, select one of the following choices:

- **Delete This Timer** - Removes the timer completely.
- **Edit This Timer** - You can edit the timer to resolve the conflict.
- **Skip This Timer Once** - Select this option if you are creating a timer for a special program (**Once**) and have a timer set for a program you watch regularly (**Mon.-Fri, Daily, or Weekly**). For example, you want to set a timer for an awards show (**Once**), but it conflicts with the timer for a news program (**Mon.-Fri, Daily, or Weekly**). Select the timer for the news program and then select **Skip This Timer Once**.

3. Select **Yes** to close the **Timer Conflict Resolution** screen.

4. Select **Done**.

MAXIMUM NUMBER OF EVENT TIMERS

You can create a limited number of event timers. If you try to create more, the receiver displays a menu giving you the option to delete an existing timer. If you do not delete an existing timer, you will not be able to create any new ones.

REVIEWING AND EDITING EVENT TIMERS

You can review and edit both automatic and manual event timers. If you need to change an event timer, you can edit almost any feature of an event timer.

Note: If you edit an automatic timer, it becomes a manual timer. The manual event timer operates at the times you set, not the actual program times.

1. Press the Menu button.
2. Select the **Timers** option. The receiver displays the **Timers** menu.



3. Select the event timer that you want to edit. A mark appears in the box next to the event timer.
4. Select the **Edit** option. You may change the **Timer Type**, **Timer Frequency**, or **Channel**. To do this, select each option that you want.
5. If you want to change the **Start Time**, the **End Time**, or the **Date**, select the **Edit Time** option to display the **Edit Time for Manual Timer** menu. Otherwise, skip to step 8 of this procedure.
6. Use the number buttons to enter the **Start Time** (this includes selecting AM or PM) and the **End Time** (this includes selecting AM or PM), if applicable.
7. Use the **number pad** buttons to enter the **Date**.
8. Select the **Create Timer** option.

DELETING AN EVENT TIMER

1. Press the Menu button.
2. Select the **Timers** option. The receiver displays the **Timers** menu.
3. Select an event timer(s) that you want to delete. A check mark appears in the box next to the event timer(s).
4. Move the highlight to **Delete** and press Select on the remote.

SPECIAL CONSIDERATIONS WHEN USING EVENT TIMERS

- **For Locked Programs** - You must enter the receiver password before you can create an automatic event timer. You can create a manual event timer for a locked program without entering the password. However, if you do this, when the event timer operates the receiver may display only an error or password entry menu. If you have set a VCR Event Timer, the VCR will record only that menu.
- **For Pay Per View Programs** - You must order a pay per view program before you can create a timer for it.
- **For Blacked Out Programs** - If you set a timer for a program that is blacked out in your area, when the event timer operates the receiver may display only an error. If you have set a **VCR Event Timer**, the VCR will record only that menu.

EVENT TIMER PERFORMANCE WHEN THE RECEIVER IS OFF

If the receiver is OFF at the time an Auto-Tune or VCR Event Timer is scheduled to operate, the receiver will turn ON. Once the event has ended, the receiver will turn OFF, unless you pressed any remote control or receiver front panel buttons during the time that the timer was active.

If the receiver is OFF at the time a Reminder Event Timer is scheduled to operate, the timer will turn the receiver ON and tune it to the channel you last watched. The receiver will then display the reminder menu. You will have a few seconds to respond. If you do not respond to the reminder menu, the receiver will turn OFF.

SETTING UP THE RECEIVER TO CONTROL A VCR (TVI MENU ONLY)

To use VCR Timers, connect the receiver back panel outputs to the audio/video inputs on the VCR (see your VCR user's guide for instructions). Before you can use VCR Timers, you must set up the receiver to control the VCR. If the receiver cannot control the VCR, use an Auto-Tune Timer to tune the receiver to the channel you want to record. Use the timers built into the VCR to start and stop the VCR at the right times.

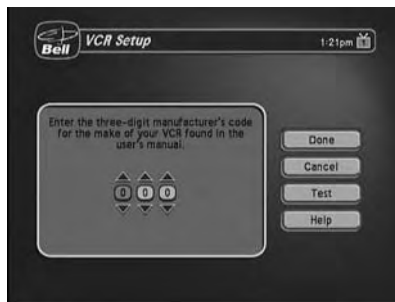
The receiver transmits an IR signal from the front panel to control the VCR. This signal is much stronger than the signal the remote uses, so it can bounce off walls or other

objects on its way to the VCR. This works in most home setups. However, shelves or smoked glass doors between the receiver front and the VCR may block the signal. Also, if the signal must cross a very large room, or bounce off curtains, it may not be strong enough to control the VCR. Make sure that nothing blocks the signal, and that the signal can bounce off relatively nearby, light-coloured, smooth surfaces.

Note: VCR setup is only available through TV1 menus.

To set up TV1 to control a VCR, use Remote Control 1 at the nearby TV and do the following:

1. Press the Menu button.
2. Select the **System Setup** option.
3. Select the **Installation** option.
4. Select the **VCR Setup** option.



5. Set the VCR code by doing one of the following:
 - Enter the 3-digit VCR code number, from the tables starting on page 4-17, using the number pad buttons.
 - Highlight each digit of the VCR code, and then press the Up or Down arrow button until you reach the correct number and then press Select.
6. Make sure the VCR is connected to one of the TV1 outputs and is set to display from the TV1 output to the nearby TV. Consult your VCR user's guide.
7. Make sure the VCR is turned on. Insert a rewind tape on which you want to record.

Note: The receiver only starts and stops the VCR recording, but does not turn ON the VCR, so you must do this yourself.
8. To test the new code, highlight the **Test** option. The receiver displays a message warning you to make sure the VCR is turned ON.
9. Press the Select button to start the test. Your VCR records for a few seconds, stops, and then rewinds. The receiver displays a message saying that your VCR test is complete. Follow the instructions on the message. If your VCR did not do the test, enter another code from the table. Repeat step 8 and this step.
10. Once you have found the correct VCR code, select the **Save** option to save the VCR code you entered and return to the **Installation and Setup** menu.

User Guide

SETTING UP A VCR FOR VCR TIMERS

After you have properly set up the receiver to control the VCR during VCR timers, complete the following to set up the VCR to operate when you set a VCR timer.

1. Turn the VCR on. Make sure you keep the VCR on because the receiver cannot turn the VCR on for you.
2. Insert a tape. A blank, rewind tape makes the best recording.
3. If you need to change the VCR settings (tape length or channel), see the instructions that came with your VCR.