

ALCATEL  
onetouch.  
*idol2<sup>s</sup>*

6050A



[www.alcatelonetouch.com](http://www.alcatelonetouch.com)

For more information on how to use the phone, please go to [www.alcatelonetouch.com](http://www.alcatelonetouch.com) and download the complete user manual.

ALCATEL  
onetouch.

smart move.

ALCATEL  
onetouch.

smart move.

# Table of Contents

<b>Safety and use</b> .....	<b>4</b>
<b>General information</b> .....	<b>11</b>
<b>1 Your mobile</b> .....	<b>12</b>
1.1 Keys and connectors.....	12
1.2 Getting started .....	14
1.3 Home screen.....	18
<b>2 Text input</b> .....	<b>28</b>
2.1 Using the Onscreen Keyboard.....	28
2.2 Text editing.....	30
<b>3 Phone call, Call log and Contacts</b> .....	<b>31</b>
3.1 Phone.....	31
3.2 Call History.....	37
3.3 Contacts.....	37
<b>4 Messaging, Gmail/Email, Google Hangouts</b> .....	<b>44</b>
4.1 Messaging.....	44
4.2 Gmail/Email.....	50
4.3 Google Hangouts .....	57
<b>5 Calendar &amp; Alarm clock &amp; Calculator</b> .....	<b>60</b>
5.1 Calendar .....	60
5.2 Time .....	62
5.3 Calculator.....	64
<b>6 Getting connected</b> .....	<b>67</b>
6.1 Connecting to the Internet .....	67
6.2 Browser.....	70
6.3 Connecting to Bluetooth devices .....	77
6.4 Connecting to a computer .....	79
6.5 WiFi Hotspot and USB Tethering.....	80

6.6 Connecting to virtual private networks.....	82
<b>7 Google Play Store</b> .....	<b>84</b>
7.1 Locate the item you want to download and install.....	84
7.2 Download and install.....	85
7.3 Manage your downloads.....	87
<b>8 Multimedia applications</b> .....	<b>89</b>
8.1 Camera/Camcorder.....	89
8.2 Gallery .....	91
8.3 YouTube.....	93
8.4 Music.....	94
<b>9 Google Maps</b> .....	<b>97</b>
9.1 Get My Location .....	97
9.2 Search for a location .....	98
9.3 Get driving, public transport or walking directions.....	99
9.4 Share a location.....	100
9.5 Map view .....	100
<b>10 Others</b> .....	<b>101</b>
10.1 File Manager .....	101
10.2 Sound Recorder .....	101
10.3 Videos .....	102
10.4 Radio .....	103
10.5 Torch.....	104
10.6 Notes .....	104
10.7 Setup Wizard .....	105
10.8 Other applications .....	105
<b>11 Settings</b> .....	<b>106</b>
11.1 Wireless & network.....	106
11.2 Device.....	109
11.3 Personal.....	114
11.4 Add account.....	120
11.5 System.....	120

<b>12 Making the most of your phone .....</b>	<b>124</b>
12.1 Smart Suite .....	124
12.2 OVER-THE-AIR SOFTWARE UPDATE CAPABLE.....	125
<b>13 Limited warranty .....</b>	<b>126</b>
<b>14 Accessories .....</b>	<b>128</b>
<b>15 Troubleshooting .....</b>	<b>129</b>
<b>16 Specifications.....</b>	<b>135</b>



www.sar-tick.com

This product meets applicable national SAR limits of 1.6 W/kg. The specific maximum SAR values can be found on page 8 of this user guide.

When carrying the product or using it while worn on your body, either use an approved accessory such as a holster or otherwise maintain a distance of 1.0 cm from the body to ensure compliance with RF exposure requirements. Note that the product may be transmitting even if you are not making a phone call.

## Safety and use.....

We recommend that you read this chapter carefully before using your phone. The manufacturer disclaims any liability for damage, which may result as a consequence of improper use or use contrary to the instructions contained herein.

### • TRAFFIC SAFETY:

Given that studies show that using a mobile phone while driving a vehicle constitutes a real risk, even when the hands-free kit is used (car kit, headset...), drivers are requested to refrain from using their mobile when the vehicle is not parked.

When driving, do not use your phone and headphone to listen to music or to the radio. Using a headphone can be dangerous and forbidden in some areas.

When switched on, your phone emits electromagnetic waves that can interfere with the vehicle's electronic systems such as ABS anti-lock brakes or airbags. To ensure that there is no problem:

- do not place your phone on top of the dashboard or within an airbag deployment area,
- check with your car dealer or the car manufacturer to make sure that the dashboard is adequately shielded from mobile phone RF energy.

### • CONDITIONS OF USE:

You are advised to switch off the mobile phone from time to time to optimize its performance.

Remember to abide by local authority rules of mobile phone use on aircrafts.

Operational Warnings: Obey all posted signs when using mobile devices in public areas.

Follow Instructions to Avoid Interference Problems: Turn off your mobile device in any location where posted notices instruct you to do so. In an aircraft, turn off your mobile device whenever instructed to do so by airline staff. If your mobile device offers an airplane mode or similar feature, consult airline staff about using it in flight.

Switch the mobile phone off when you are in health care facilities, except in designated areas. As with many other types of equipment now in regular use, mobile phones can interfere with other electrical or electronic devices, or equipment using radio frequency.

Switch the mobile phone off when you are near gas or flammable liquids. Strictly obey all signs and instructions posted in a fuel depot, gas station, or chemical plant, or in any potentially explosive atmosphere.

When the mobile phone is switched on, it should be kept at least 15 cm from any medical device such as a pacemaker, a hearing aid or insulin pump. In particular when using the mobile phone you should hold it against the ear on the opposite side to the device, if any.

Read and follow the directions from the manufacturer of your implantable medical device. If you have any questions about using your mobile device with your implantable medical device, consult your healthcare provider.

To avoid hearing impairment, answer the call before holding your mobile phone to your ear. Also move the handset away from your ear while using the “hands-free” option because the amplified volume might cause hearing damage. It is recommended to have proper supervision while small children use your mobile phone.

When replacing the cover please note that your mobile phone may contain substances that could create an allergic reaction.

Always handle your mobile phone with care and keep it in a clean and dust-free place.

Do not allow your mobile phone to be exposed to adverse weather or environmental conditions (moisture, humidity, rain, infiltration of liquids, dust, sea air, etc.). The manufacturer’s recommended operating temperature range is -10°C (10°F) to +50°C (122°F). The maximum value depends on device, materials and housing paint/texture. Over 50°C (122°F) the legibility of the mobile phone’s display may be impaired, though this is temporary and not serious.

Do not open or attempt to repair your mobile phone yourself.

Do not drop, throw or try to bend your mobile phone.

Do not use the mobile phone if the glass made screen, is damaged, cracked or broken to avoid any injury.

Do not paint it.

Use only batteries, battery chargers, and accessories which are recommended by TCT Mobile Limited and its affiliates and are compatible with your mobile phone model.

TCT Mobile Limited and its affiliates disclaim any liability for damage caused by the use of other chargers or batteries.

Your mobile phone should not be disposed of in a municipal waste. Please check local regulations for disposal of electronic products.

Remember to make back-up copies or keep a written record of all important information stored in your mobile phone.

Some people may suffer epileptic seizures or blackouts when exposed to flashing lights, or when playing video games. These seizures or blackouts may occur even if a person never had a previous seizure or blackout. If you have experienced seizures or blackouts, or if you have a family history of such occurrences, please consult your doctor before playing video games on your mobile phone or enabling a flashing-lights feature on your mobile phone. Parents should monitor their children’s use of video games or other features that incorporate flashing lights on the mobile phones.

All persons should discontinue use and consult a doctor if any of the following symptoms occur: convulsion, eye or muscle twitching, loss of awareness, involuntary movements, or disorientation. To limit the likelihood of such symptoms, please take the following safety precautions:

- Play at the farthest distance possible from the screen.

When you play games on your mobile phone, you may experience occasional discomfort in your hands, arms, shoulders, neck, or other parts of your body. Follow these instructions to avoid problems such as tendinitis, carpal tunnel syndrome, or other musculoskeletal disorders:

- Take a minimum of a 15-minute break every hour of game playing.

- If your hands, wrists, or arms become tired or sore while playing, stop and rest for several hours before playing again.

- If you continue to have sore hands, wrists, or arms during or after playing, stop the game and see a doctor.



### PROTECT YOUR HEARING

To prevent possible hearing damage, do not listen at high volume levels for long periods. Exercise caution when holding your device near your ear while the loudspeaker is in use.

### • PRIVACY:

Please note that you must respect the laws and regulations in force in your jurisdiction or other jurisdiction(s) where you will use your mobile phone regarding taking photographs and recording sounds with your mobile telephone. Pursuant to such laws and regulations, it may be strictly forbidden to take photographs and/or to record the voices of other people or any of their personal attributes, and duplicate or distribute them, as this may be considered to be an invasion of privacy. It is the user’s sole responsibility to ensure that prior authorisation be obtained, if necessary, in order to record private or confidential conversations or take a photograph of another person; the manufacturer, the seller or vendor of your mobile phone (including the operator) disclaim any liability which may result from the improper use of the mobile phone.

## • BATTERY AND ACCESSORIES:

Please note your phone is of a unibody device, the back cover and battery are non-removable. Observe the following precautions:

- Do not attempt to open the back cover,
- Do not attempt to eject, replace or open battery,
- Do not puncture the back cover of your phone,
- Do not burn or dispose of your phone in household rubbish or store it at temperatures above 60°C.

Phone and battery as a unibody device must be disposed of in accordance with locally applicable environmental regulations.



This symbol on your telephone and accessories means that these products must be taken to collection points at the end of their life:

- Municipal waste disposal centres with specific bins for these items of equipment.
- Collection bins at points of sale.

They will then be recycled, preventing substances being disposed of from entering the environment, so that their components can be reused.

### In European Union countries:

These collection points are accessible free of charge.

All products with this sign must be brought to these collection points.

### In non European Union jurisdictions:

Items of equipment with this symbol are not to be thrown into ordinary bins if your jurisdiction or your region has suitable recycling and collection facilities; instead they are to be taken to collection points for them to be recycled.

In the United States you may learn more about CTIA's Recycling Program at <http://www.gowirelessgogreen.org/>

**CAUTION: RISK OF EXPLOSION IF BATTERY IS REPLACED BY AN INCORRECT TYPE. DISPOSE OF USED BATTERIES ACCORDING TO THE INSTRUCTIONS.**

## • CHARGERS

Home A.C./ Travel chargers will operate within the temperature range of: 0°C (32°F) to 40°C (104°F).

The chargers designed for your mobile phone meet with the standard for safety of information technology equipment and office equipment use. Due to different applicable electrical specifications, a charger you purchased in one jurisdiction may not work in another jurisdiction. They should be used for this purpose only.

Characteristics of power supply (depending on the country):

Travel charger: Input: 100-240 V, 50/60 Hz, 150 mA

Output: 5 V, 1000 mA

Battery: LI-Polymer 2150 mAh

## • RADIO WAVES:

**THIS MOBILE PHONE MEETS THE GOVERNMENT'S REQUIREMENTS FOR EXPOSURE TO RADIO WAVES.**

Your mobile phone is a radio transmitter and receiver. It is designed and manufactured not to exceed the emission limits for exposure to radio-frequency (RF) energy.

These limits are part of comprehensive guidelines and establish permitted levels of RF energy for the general population. The guidelines are based on standards that were developed by independent scientific organizations through periodic and thorough evaluation of scientific studies. These guidelines include a substantial safety margin designed to ensure the safety of all persons, regardless of age and health.

The exposure standard for mobile phones employs a unit of measurement known as the Specific Absorption Rate, or SAR. The SAR limit set by public authorities such as the Federal Communications Commission of the US Government (FCC), or by Industry Canada, is 1.6 W/kg averaged over 1 gram of body tissue. Tests for SAR are conducted using standard operating positions with the mobile phone transmitting at its highest certified power level in all tested frequency bands.

Although the SAR is determined at the highest certified power level, the actual SAR level of the mobile phone while operating can be well below the maximum value. This is because the mobile phone is designed to operate at multiple power levels so as to use only the power required to reach the network. In general, the closer you are to a wireless base station antenna, the lower the power output of the mobile phone.

Before a mobile phone model is available for sale to the public, compliance with national regulations and standards must be shown.

The highest SAR value for this model mobile phone when tested is 0.82 W/kg for use at the ear and 1.44 W/kg for use close to the body.

While there may be differences between the SAR levels of various mobile phones and at various positions, they all meet the government requirement for RF exposure. For body-worn operation, the mobile phone meets FCC RF exposure guidelines provided that it is used with a non-metallic accessory with the handset at least 10 mm from the body. Use of other accessories may not ensure compliance with FCC RF exposure guidelines.

Additional information on SAR can be found on the Cellular Telecommunications & Internet Association (CTIA) Web site: <http://www.ctia.org/>

The World Health Organization (WHO) considers that present scientific information does not indicate the need for any special precautions for use of mobile phones. If individuals are concerned, they might choose to limit their own or their children's RF exposure by limiting the length of calls, or using "hands-free" devices to keep mobile phones away from the head and body. (fact sheet n°193).

Additional WHO information about electromagnetic fields and public health are available on the following website: <http://www.who.int/peh-emf>.

Note: This equipment has been tested and found to comply with the limits for a Class B digital device pursuant to part 15 of the FCC Rules. These limits are designed to provide reasonable protection against harmful interference in a residential installation. This equipment generates, uses and can radiate radio frequency energy and, if not installed and used in accordance with the instructions, may cause harmful interference to radio communications. However, there is no guarantee that interference to radio or television reception, which can be determined by turning the equipment off and on, the user is encouraged to try to correct the interference by one or more of the following measures:

- Reorient or relocate the receiving antenna.
- Increase the separation between the equipment and receiver.
- Connect the equipment into an outlet on a circuit different from that to which the receiver is connected.
- Consult the dealer or an experienced radio/ TV technician for help.

Changes or modifications not expressly approved by the party responsible for compliance could void the user's authority to operate the equipment.

For the receiver devices associated with the operation of a licensed radio service (e.g. FM broadcast), they bear the following statement:

This device complies with Part 15 of the FCC Rules. Operation is subject to the condition that this device does not cause harmful interference.

For other devices, they bear the following statement:

This device complies with Part 15 of the FCC Rules. Operation is subject to the following two conditions:

- (1) This device may not cause harmful interference
- (2) This device must accept any interference received, including interference that may cause undesired operation.

Your mobile phone is equipped with a built-in antenna. For optimal operation, you should avoid touching it or degrading it.

As mobile devices offer a range of functions, they can be used in positions other than against your ear. In such circumstances the device will be compliant with the guidelines when used with headset or usb data cable. If you are using another accessory ensure that whatever product is used is free of any metal and that positions the mobile phone at least 10 mm away from the body.

## • LICENSES



microSD Logo is a trademark.



The Bluetooth® word mark and logos are owned by the Bluetooth SIG, Inc. and any use of such marks by TCL Mobile Ltd. and its affiliates is under license. Other trademarks and trade names are those of their respective owners.

## ALCATEL ONETOUCH 6050A Bluetooth Declaration ID D022040



The Wi-Fi Logo is a certification mark of the Wi-Fi Alliance.

Google, the Google logo, Android, the Android logo, Google Search™, Google Maps™, Gmail™, YouTube, Google Play Store, Google Latitude™ and Google Hangouts™ are trademarks of Google Inc.

The Android robot is reproduced or modified from work created and shared by Google and used according to terms described in the Creative Commons 3.0 Attribution License (the text will show when you touch and hold Google legal in **Settings>About phone\Legal information**).<sup>(1)</sup>

You have purchased a product which uses the open source (<http://opensource.org/>) programs mtd, msdosfs, netfilter/iptables and initrd in object code and other open source programs licensed under the GNU General Public License and Apache License.

We will provide you with a complete copy of the corresponding source codes upon request within a period of three years from the distribution of the product by TCT.

You may download the source codes from <http://sourceforge.net/projects/alcatel/files/>. The provision of the source code is free of charge from internet.

For more information please visit our website

<http://www.alcatelonetouch.com>

FCC ID: RAD500

<sup>(1)</sup> Availability may vary depending on country of use.

## General information .....

- **Website:** [www.alcatelontouch.com](http://www.alcatelontouch.com)
- **Facebook:** [www.facebook.com/ALCATELONETOUCHCanada](http://www.facebook.com/ALCATELONETOUCHCanada)
- **Twitter:** [www.twitter.com/alcatel|touch](http://www.twitter.com/alcatel|touch)
- **Hot Line Number:** In North America, call 877-702-3444 for technical support. In Canada, please call 888-841-5371 prior to December 12, 2014. After December 12, 2014, please call 855-844-6058.

On our website, you will find our FAQ (Frequently Asked Questions) section. You can also contact us by e-mail to ask any questions you may have.

An electronic version of this user guide is available in English and other languages according to availability on our server: [www.alcatelontouch.com](http://www.alcatelontouch.com).

Your telephone is a transceiver that operates on GSM in quad-band (850/900/1800/1900MHz), UMTS in Quad-band (850/900/1900/2100MHz) or LTE : B1/2/4/7/17 MHz.

### Protection against theft<sup>(1)</sup>

Your telephone is identified by an IMEI (phone serial num-ber) shown on the packaging label and in the phone's memory. We recommend that you note the number the first time you use your telephone by entering \* # 0 6 # and keep it in a safe place. It may be requested by the police or your operator if your telephone is stolen. This number allows your mobile telephone to be blocked, preventing a third person from using it, even with a different SIM card.

### Disclaimer

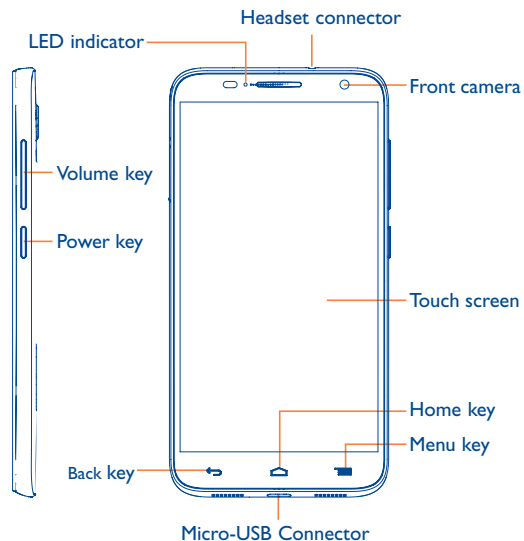
There may be certain differences between the user manual description and the phone's operation, depending on the software release of your telephone or specific operator services.

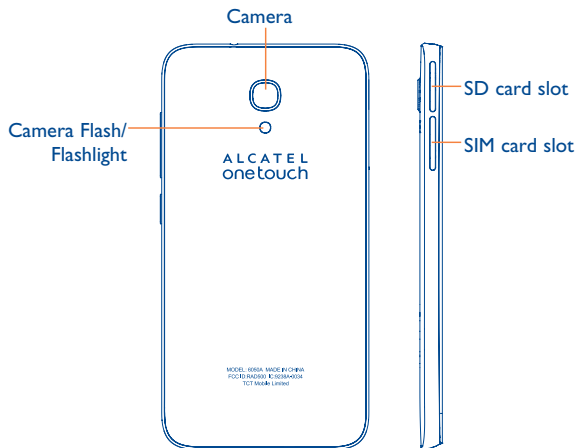
TCT Mobile shall not be held legally responsible for such differences, if any, nor for their potential consequences, which responsibility shall be borne by the operator exclusively.

<sup>(1)</sup> Contact your network operator to check service availability.

## Your mobile .....

### 1.1 Keys and connectors





### ☰ Menu key

- Touch to access settings options.
- Touch and hold to open a list of recent apps.

### 🏠 Home key

- Touch to return to the Home screen from any other screen or application.

### ⬅️ Back key

- Touch to go back to the previous screen, or to close a dialog box, options menu, the notification panel, etc.

These keys are visible when the screen lights up.

### 🔑 Power key


- Press: Lock the screen/Light up the screen.
- Press and hold: Show the pop-up menu to select from Power off/Restart/Airplane mode/Quick start.
- Press the **Power** key for more than 9s to restart.
- Press the **Power** key and Volume up key to reset.
- Press the **Power** key and Volume down key to capture a screenshot.

### 🔊 Volume Keys

- In call mode, adjusts the earpiece or headset volume.
- In Music/Video/Streaming mode, adjusts the media volume.
- In general mode, adjusts the ringtone volume.
- Mutes the ringtone of an incoming call.

## 1.2 Getting started

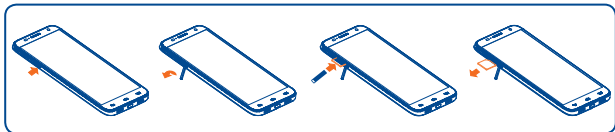
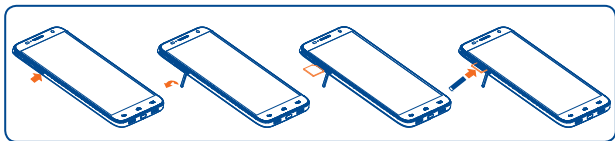
### 1.2.1 Set-up

An insertion tool  is provided with the phone package, please use to install or remove the SIM/SD card conveniently.


#### Inserting or removing the SIM card

You must insert your SIM card to make phone calls. Please power off your phone before inserting or removing the SIM card.

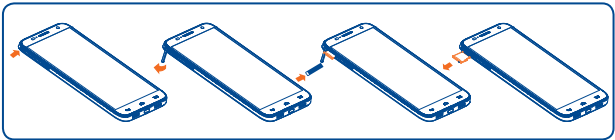
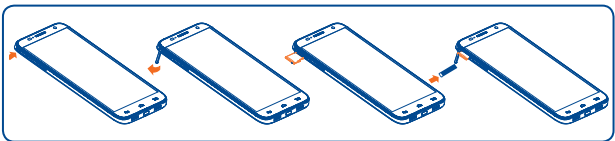





To install, place the SIM card with the chip facing downwards in to the housing, and then slide it into its slot. Make sure that it is correctly inserted. To remove the card, press and slide it out.

 Your phone only supports micro-SIM cards. Do not attempt to insert other SIM type like mini and nano card, otherwise this may cause phone damage.

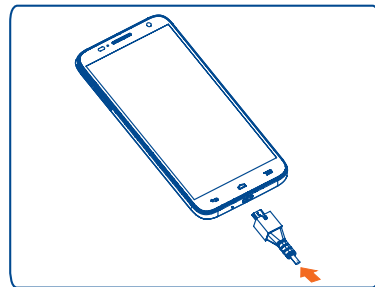
### Installing or removing the microSD card



Insert the microSD card with the golden contact facing downwards into the slot. To remove the microSD card, gently press and slide it out.


 To avoid data loss and SD card damage, before removing the SD card, please ensure that the SD card is unmounted (**Settings** | **Storage** | **Unmount SD card**).


### Charging the battery



Connect the battery charger to your phone and mains socket respectively, the LED indicator will light while charging.

- Make sure the battery is correctly inserted before connecting the charger.
- When using your telephone for the first time, charge the battery fully (approximately 3 hours).

You are advised to fully charge the battery (). Charging status is indicated by a percentage displayed on screen while the phone is powered off. The percentage increases as the phone is charged.

 To reduce power consumption and energy waste when the battery is fully charged, disconnect your charger from the plug; switch off Wi-Fi, GPS, Bluetooth or background-running applications when not in use; reduce the backlight time, etc.

### 1.2.2 Power on your phone

Hold down the **Power** key until the phone powers on, unlock your phone (Slide, PIN, Password, Pattern or Face unlock) if necessary and confirm. The Home screen is displayed.

If you do not know your PIN code or if you have forgotten it, contact your network operator. Do not leave your PIN code with your phone. Store this information in a safe place when not in use.

### Set up your phone for the first time

The first time you power on the phone, you should set the following options:

- Select the phone's language, then touch → .
- Select the Input Method, then touch → .
- Set your Date & Time, then touch → .
- **Setup Google Account:** If you want to set your Google Account, touch **Setup Now**. If you have a Google Account, touch **Existing**, then enter your Email address and password. If you've forgotten your password, you can go to <http://www.google.com> to retrieve it. If you don't own a Google Account, you are prompted to create one by touching **New**.
- The Setup complete screen will display, touch ✓ to confirm.

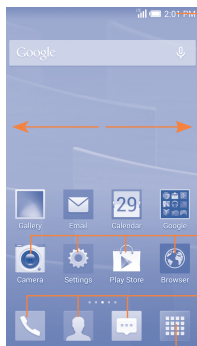
Even if no SIM card is installed, your phone will still power on and you will be able to connect to a Wi-Fi network, (refer to section "6.1.2 Wi-Fi"), sign into your Google account and use some features.

### 1.2.3 Power off your phone

Hold down the **Power** key from the Home screen until the phone options appear, select **Power off**.

## 1.3 Home screen

You can bring all the items (applications, shortcuts, folders and widgets) you love or use most frequently to your Home screen for quick access. Touch the **Home** key to switch to the Home screen.



#### Status bar

- Status/Notification indicators
- Touch and drag down to open the notification panel.

Touch an icon to open an application, folder, etc.

#### Favourite tray applications

- Touch to enter the application.
- Touch and hold to move or change applications.

#### Application tab

- Touch to open main menu.

The Home screen is provided in an extended format to allow more space for adding applications, shortcuts etc. Slide the Home screen horizontally left and right to get a complete view.

### 1.3.1 Using the touchscreen

#### Touch



To access an application, touch it with your finger.

#### Touch and Hold



To enter the available options for an item, touch and hold the item. For example, select a contact in Contacts, touch and hold this contact, an options list will then appear on screen.

## Drag



Place your finger on the screen to drag an object to another location.

## Slide/Swipe



Slide the screen to scroll up and down the applications, images, web pages... at your convenience. You can slide the screen horizontally too.

The device also supports one finger zooming in the Messaging, Browser, Email, Camera and Gallery functions. Double tap the screen then slide with one finger to zoom in/out.

## Flick



Similar to swiping, but flicking makes it move quicker.

## Pinch/Spread



Place the fingers of one hand on the screen surface and draw them apart or together to scale an element on the screen.

## Rotate



Automatically change the screen orientation from portrait to landscape by turning the phone sideways to have a better screen view.
































### 1.3.2 Status bar

From the status bar, you can view both phone status and notification information.

## Status icons

	GPRS connected		No signal
	GPRS in use		Alarm is set
	EDGE connected		Bluetooth is on
	EDGE in use		Connected to a Bluetooth device
	3G connected		Speakerphone is on
	3G in use		Phone microphone is muted
	HSPA(3G+) connected		Roaming
	HSPA(3G+) in use		No SIM card installed
	HSPAP connected		Vibrate mode
	HSPAP in use		LTE connected
	4G connected		LTE in use
	4G in use		Battery is very low
	Wi-Fi is on		Battery is low
	Connected to a Wi-Fi network		Battery is partially drained
	Signal strength		Battery is full
	Airplane mode		Battery is charging
	Ringer is silenced		
	NFC is on		

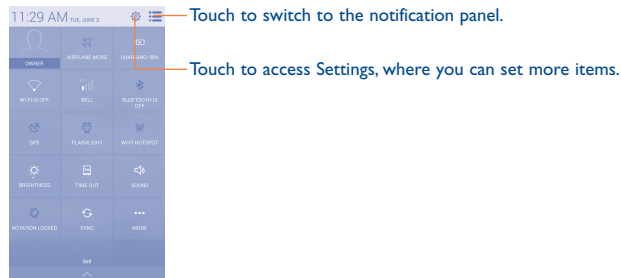
## Notification icons

	New Gmail message		Missed call
	New Email message		Call forwarding is on
	New text or multimedia message		Song is playing
	Problem with SMS or MMS delivery		Connected to VPN
	New Google Hangouts		Disconnected from VPN
	New voicemail		Radio is on
	Upcoming event		Uploading data
	Screenshot error		Downloading data
	Screenshot captured		Download finished
	MicroSD card is full		Select input method
	Safe to remove SD card		An open Wi-Fi network is available
	Preparing SD card		Phone is connected via USB cable
	Both USB tethering and portable hotspot are on		System update available
	USB tethering is on		Carrier data use threshold approaching or exceeded
	Portable Wi-Fi hotspot is on		GPS is on
	Receiving location data from GPS		

Touch and drag down the Status bar to open the Quick setting panel or Notification panel. Touch and drag up to close it. When there are notifications, touching them allows you to access their information directly.

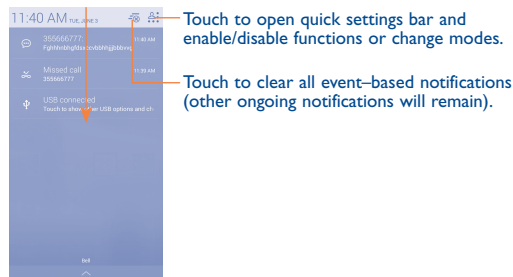
## Quick setting panel

Touch and drag down the Status bar to open the Quick setting panel, where you can enable or disable functions or change modes by touching the icons.



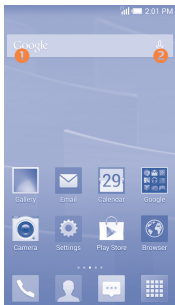
## Notification panel

When there are notifications, touch and drag down the Status bar to open the Notification panel and read their information in detail.




### 1.3.3 Search bar


The phone provides a Search function which can be used to locate information within applications, the phone or the web.



#### 1 Search by text

- Touch the Search bar from the Home screen.
- Enter the text/phrase you want to search for.
- Touch the  icon on the keyboard if you want to search on the web.

#### 2 Search by voice

- Touch  from the Search bar to display a dialog screen.
- Speak the word/phrase you want to search for. A list of search results will display for you to select from.

### 1.3.4 Lock/Unlock your screen

To protect your phone and privacy, you can lock the phone screen by choosing slide or creating a variety of patterns, a PIN or password, etc.

**To create a screen unlock pattern** (refer to section “Screen lock” for detailed settings)

- Touch the **Menu** key from the Home screen, then touch **Settings\Look settings\Screen lock\Pattern**.
- Draw your own pattern.



**To create a screen unlock PIN/Password**

- Touch the **Menu** key from the Home screen, then touch **Settings\Security\Screen lock\PIN or Password**.
- Set your PIN or password.

**To lock phone screen**

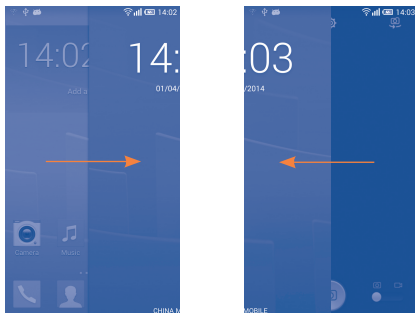
Press the **Power** key once to lock the screen.

## To unlock the phone screen

Press the **Power** key once to light up the screen, draw the unlock pattern you have created or enter your PIN or password, etc. to unlock the screen.

If you have chosen **Slide** as the screen lock, you can:

- double tap the screen to unlock it if it is dark;
- press the **Power** key to light up the screen first, then slide right to unlock the screen or slide left to enter Camera mode.



## 1.3.5 Personalize your Home screen


### Add

You can touch and hold a folder, an application or a widget to activate the Move mode, and drag the item to your preferred Home screen.

## Reposition

Touch and hold the item to be repositioned to activate the Move mode, drag the item to the desired position and then release. You can move items both on the Home screen and the Favourite tray. Hold the icon on the left or right edge of the screen to drag the item to another Home screen.

## Remove

Touch and hold the item to be removed to activate the Move mode, drag the item up to the top of the  icon, and release after the item turns red.

## Create folders

To improve the organization of items (shortcuts or applications) on the Home screen and the Favourite tray, you can add them to a folder by stacking one item on top of another. To rename a folder, open it and touch the folder's title bar to input the folder name.

## Wallpaper customization

Touch the **Menu** key on the Home screen then touch **Set wallpaper** to customize wallpaper.

## 1.3.6 Widgets and recently-used applications

### Consult widgets

Touch and hold an empty area in the Home screen to display all widgets at the bottom of the Home screen.

Touch the empty area to return to the original Home screen view.


## Consult recently-used applications

To consult recently-used applications, touch and hold the **Menu** key from the Home screen. Touch a thumbnail in the window to open the related application.



Slide horizontally to view all thumbnails of recently-used applications.

Touch one thumbnail and slide it upwards to delete it and downwards to lock the thumbnail.

Touch the  icon at the bottom of the screen to activate the system's one key boost which clears memory used by recent applications. If a thumbnail is locked its memory will not be cleared.

### 1.3.7 Volume adjustment

#### Using the volume key

Press the **Volume** key to adjust the volume. To active the vibrate mode, press the **Volume down** key until the phone vibrates. Press the **Volume down** key once more to activate silent mode.


#### Using Settings menu

Touch the **Menu** key from the Home screen, then touch **Settings\Sound\Volume** to set the volume of media, ringtone, alarm, etc. to your preference.

## 2 Text input .....

### 2.1 Using the Onscreen Keyboard

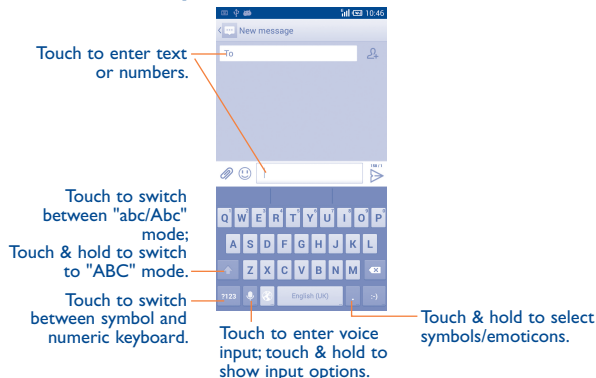
#### Onscreen Keyboard settings

Touch the **Menu** key from the Home screen, select **Settings\Language & input**, touch the Settings icon  on the right of **Android keyboard**, and a series of settings will become available for your selection.

#### Adjust the Onscreen Keyboard orientation

Turn the phone sideways or upright to adjust the Onscreen Keyboard orientation. You can also adjust it by changing the settings (touch the **Menu** key on the Home screen, then touch **Settings\Display\Auto-rotate screen**).

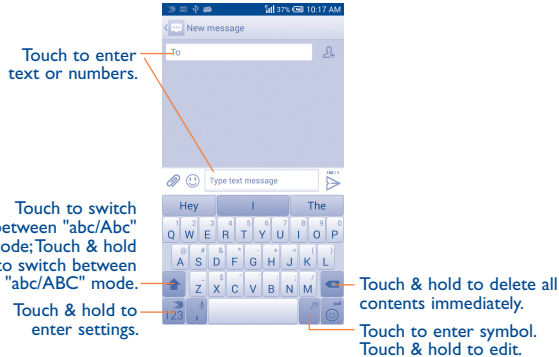
#### 2.1.1 Android keyboard



## 2.1.2 SwiftKey






SwiftKey Input lets you enter a word with one continuous motion: just drag your finger over the letters in the word.

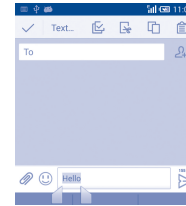
- Place your finger on the key with the first letter of the word and drag your finger to each subsequent letter without lifting your finger off the screen.
- Continue until you have finished the word. Lift your finger after the last letter.
- If SwiftKey Input cannot clearly determine your word, the word choice window opens. Select an alternative word from the list.



## 2.2 Text editing

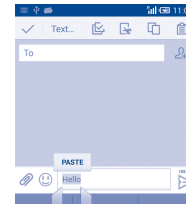
You can edit the text you have entered.

- Touch and hold or double-tap within the text you would like to edit.
- Drag the tabs to change the highlighted selection.
- The following options will appear: **Select all** , **Cut** , **Copy**  or **Paste** .
- Touch the  icon to go back without any action.



You can also insert new text if preferred

- Touch where you want to type, or touch and hold the blank area. The cursor will blink and the tab will appear. Drag the tab to move the cursor.
- If you have selected any text, touch the tab to show the **PASTE** icon which allows you to complete pasting immediately.





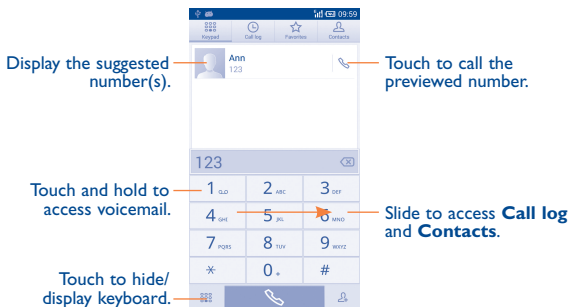
# 3 Phone call, Call log and Contacts .....


## 3.1 Phone .....



### 3.1.1 Placing a call

You can easily initiate a call by using **Phone**. Touch the  icon on the home screen to access the **Phone** application.



Enter the desired number from the keyboard directly or select a contact from **Contacts** or **Call log** by sliding or touching tabs, then touch  to place the call.

The number you entered can be saved to **Contacts** by touching the  key and touching **Create new contact**.


If you make a mistake, you can delete the incorrect digits by touching .

To end a call, touch  or the **Power** key (when the **Call settings** **Power key ends call** option is activated).


### Speed dial settings

You can access the setting screen by touching the **Menu** key and then touching **Speed dial** on the Dial screen. Select contacts to assign to keys 2 to 9 as speed dialers.

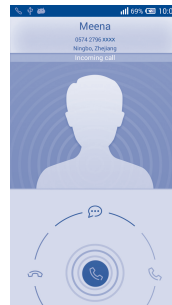
### International call

To dial an international call, touch and hold **0+** to enter "+", then enter the international country prefix followed by the full phone number and finally touch .




### Emergency call

If your phone has network coverage, dial the emergency number and touch  to make an emergency call. This works even without a SIM card and without typing the PIN code.

### 3.1.2 Answering or rejecting a call



When you receive a call:

- Slide the  icon to the right to answer;
- Slide the  icon to the left to reject;
- Slide the  icon upwards to reject the call by sending a preset message.

To mute the ringtone volume of an incoming call, press the **Volume up/down** key or turn over the phone (when the **Call settings\Turn over to mute** option is activated).

### 3.1.3 Calling your voicemail

Your voicemail is provided by your network to avoid missing calls. It works like an answering machine that you can consult at any time.

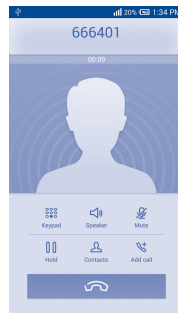
To access your voicemail, touch and hold  on the **Phone** tab.

To set your voicemail number, touch the **Menu** key from the Dial screen, then touch **Settings\Voicemail\Voicemail settings\Voicemail number**.

If you receive a voicemail, a voicemail icon  appears on the Status bar. Open the Notification panel and touch **New voicemail**.

### 3.1.4 During a call

To adjust the volume during a call, press the **Volume up/down** key.



Touch to end the current call.



Touch to display the Dialpad.



Touch to activate the speaker during the current call. Touch this icon again to deactivate the speaker.



Touch to mute the current call. Touch this icon again to unmute the call.



Touch to hold the current call. Touch this icon again to retrieve the call.



Touch to find Contacts.



Touch to add a call.




To avoid accidental operation of the touchscreen during a call, the screen will be locked automatically when you put the cellphone close to your ear; it will be unlocked when the cellphone is taken away from your ear.

### 3.1.5 Managing multiple calls





With this phone you can handle multiple calls at the same time.

#### Swap calls

When you accept two calls, touch the  icon, you can now switch between two lines. The current call is put on hold and you have joined in the other call.

#### Conference calls<sup>(1)</sup>

You can set up a conference call as follows:

- Place a call to the first participant of the conference call.
- Touch the icon .
- Touch **Add call** to type a number. Then touch the  icon and click  and **Merge calls** to start the conference.
- Touch  to end the conference call and disconnect all callers.

### 3.1.6 Call settings

Touch the **Menu** key from the dial screen, then touch **Settings**. The following options are available:

#### Voicecall settings

- **Call forwarding:** Touch to configure how your calls are forwarded when you are busy, unanswered or unreachable.
- **Additional settings**
  - **Caller ID:** Touch to use default operator settings to display your number in outgoing calls.
  - **Call waiting:** Mark the check box to notify you of new incoming calls during a call.
  - **Call waiting status:** Check the call waiting status of your phone.

<sup>(1)</sup> Depending on your network operator.

#### Voicemail settings

- **Voicemail Service:** Opens a dialog box where you can select your carrier's voicemail service or another service.
- **Voicemail settings:** If you are using your carrier's voicemail service, this opens a dialog box where you can enter the phone number to use for listening to and managing your voicemail. You can enter a comma (,) to insert a pause into the number — for example, to add a password after the phone number.

#### Other call settings

- **Fixed dialing numbers:** Fixed dialing number (FDN) is a SIM service mode, where outgoing calls are restricted to a set of phone numbers. These numbers are added to the FDN list. The most common practical application of FDN is for parents to restrict the phone numbers to which their children can dial. For security reasons, you'll be prompted to enable FDN by entering SIM PIN2 which is usually acquired from your service provider or SIM maker.
- **Service Dialling Numbers:** You can place a call from the SDN list.
- **Dialpad touch tones:** Mark the checkbox to enable playing tones when using dialpad.
- **Quick responses:** Touch to edit quick responses which will be used when you reject a call with messages.
- **Vibrate reminder:** Mark the checkbox to enable vibration when the call is connected.
- **Turn over to mute:** Marking the checkbox lets you mute the incoming calls by turning the phone over.
- **Power key ends call:** Mark the checkbox to end a call by pressing the **Power** key during the call.
- **Noise Cancellation:** Mark the checkbox to reduce the background noise.
- **Pocket mode:** Mark the checkbox to increase ringtone volume and active vibrate mode when device is in a pocket or bag.

- **TTY mode:** TTY mode can be used by people who are deaf, have poor hearing or speech impairments.

## 3.2 Call History

You can access your call memory by touching  from the Dial screen.

Touch  on the right side of a contact/number to place a call directly.

Touch a contact or number to view information or further operations.

You can view detailed information of a call, launch a new call or send messages to a contact or number, or add numbers to **Contacts**, etc.

To clear the entire call memory, touch the **Menu** key and **Clear call log**.

## 3.3 Contacts.....

**Contacts** enables quick and easy access to the people you want to reach.

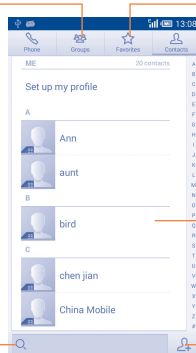
You can view and create contacts on your phone and synchronize these with your Gmail contacts or other applications on the web or on your phone.

### 3.3.1 Consult your contacts

To access this feature, touch  from the Home screen, then select **Contacts**.

Touch to view your contact groups.

Touch to view your favourite contacts.



Touch to search in **Contacts**.

Touch to view the contact's detailed information.

Touch to add new contact.

Touch the **Menu** key to display the contacts list option menu, following actions are enabled:

- **Contacts to display** Choose contacts to display.
- **Import/export** Import or export contacts between phone, SIM card, and microSD card; or to share contacts.
- **Delete** Select and delete unwanted contacts.
- **Accounts** Manage the synchronization settings for different accounts.
- **Settings** Touch to change the display of the sort list and contact names.

### 3.3.2 Managing contact groups

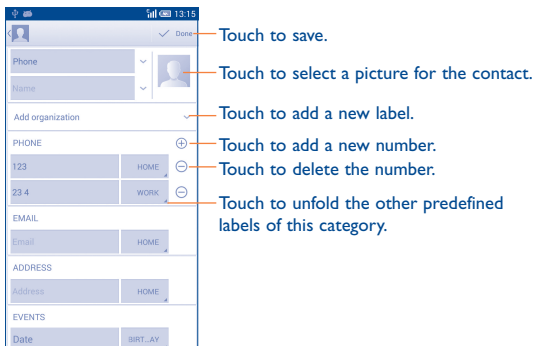
The contact group helps you to improve the organization of your contacts. You can add, remove and view groups in the **Groups** screen.

To create a new group, touch the **Menu** key then select **Add Group**, enter the new name and touch **DONE** to confirm.

### 3.3.3 Adding a contact

Touch the  icon in the contact list to create a new contact.

You are required to enter the contact's name and other contact information. By scrolling up and down the screen, you can move from one field to another easily.





If you want to add more information, touch **Add another field** to add a new category.

When finished, touch **DONE** to save.

To exit without saving, you can touch the **Menu** key and then touch **Discard**.

### Add to/remove from Favourites<sup>(1)</sup>

To add a contact to favourites, you can touch a contact to view details then touch  to add the contact to favourites (the star will turn gold in colour).


To remove a contact from favourites, touch the gold star  on contact details screen.

### 3.3.4 Editing your contacts

To edit contact information, touch the **Menu** key in the contact details screen, then touch **Edit**. When finished, touch **DONE**.

### Change a contact's default phone number

The default phone number (the number which has priority when making a call or sending a message) will always be displayed under the contact name.

To change the default phone number, touch and hold the number you want to set as the default number from the contact's details screen, then select **Set default**. A  appears after the number.

This choice is only available when the contact has more than one number.

### Divert calls to voicemail/Set ringtone for a contact<sup>(2)</sup>

On the contact's detail screen, touch the **Menu** key to display the contacts list options menu, touch **All calls to voicemail** or **Set ringtone**.

When one contact has been set to send calls directly to voicemail, if he/she calls, your phone will not ring and the caller will be sent directly to your voicemail.

<sup>(1)</sup> Only phone contacts can be added to Favourites.

<sup>(2)</sup> Only phone contacts can set ringtone.

## Delete a contact

To delete a contact, touch the **Menu** key and **Delete** from the contact screen. Tick the contact you want to remove and touch **DONE** to confirm. Touch **Select all** to delete all contacts.




The contact you have deleted will also be removed from other applications on the phone or web the next time you synchronize your phone.

### 3.3.5 Communicating with your contacts

From the contacts list, you can communicate with your contacts by making a call or exchanging messages.


To launch a call to a contact, touch the contact to enter the detail screen, then touch the number.


To send a message to a contact, touch the contact to enter the detail screen, then touch the  icon on the right side of the number.

### 3.3.6 Importing, exporting and sharing contacts

This phone enables you to import or export contacts between your phone, SIM card, microSD card and phone storage.

From the Contacts screen, touch the **Menu** key to open the options menu, touch **Import/export**, then select **Import from SIM card**, **Export to SIM card**, **Import from phone/SD storage**, **Export to phone/SD storage** or **Share visible contacts**.

To import/export a single contact from/to your SIM card, select the contact you want to import/export, and touch  **DONE** to confirm.

To import/export all contacts from/to your SIM card, select **Select all** and touch  **DONE** to confirm.

You can share a single contact or contacts with others by sending the contact's vCard to them via Bluetooth, SMS or Email.

Touch a contact you want to share, touch the **Menu** key and **Share** from the contact details screen, then select the application to perform this action.

### 3.3.7 Displaying contacts

You can configure which group of contacts, for each account, you want to display in the Contacts list. Touch the **Menu** key and touch **Contacts to display** from contacts list screen, then you can choose which contacts to display.

Touch the **Menu** key and **Settings**, to sort the list by the given name or family name, as well as viewing contact names by given/family name first.

### 3.3.8 Joining/Separating contacts<sup>(1)</sup>

To avoid duplication, you can add any new contact information to existing contacts in a single action.

Touch the contact which you want to add information to, touch the **Menu** key and touch **Edit**, then touch the **Menu** key again and touch **Join**.

At this time, you are required to select the contact whose information you want to join with the first contact. The information from the second contact is added to the first one, and the second contact will no longer be displayed in the Contacts list.

To separate contact information, touch the contact whose information you want to separate, touch the **Menu** key and touch **Edit**, then touch the **Menu** key again and touch **Separate**, touch **OK** to confirm.

<sup>(1)</sup> Only applicable for phone contacts.

### 3.3.9 Accounts

Contacts, data or other information can be synchronized from multiple accounts, depending on the applications installed on your phone.

To add an account, drag down the notification panel and touch  to enter **Settings**, then touch **Add account**.

You are required to select the kind of account you are adding, like Google, Corporate, etc.

As with other account set-ups, you need to enter detailed information, like username, password, etc.

You can remove an account to delete it and all associated information from the phone. Open the **Settings** screen, touch the account you want to delete, touch the **Menu** key and select **Remove account**, then confirm.

#### Turn on/off the sync & Auto-sync

Touch an account to enter the account screen, mark/unmark the checkbox(s) to turn on/off the account's auto-sync. When activated, all changes to information on the phone or online will be automatically synchronized with each other.

#### Sync manually


You can also synchronize an account manually from the **Accounts** screen. Touch an account in the list, then touch the **Menu** key and select **Sync now**.

## 4 Messaging, Gmail/Email, Google Hangouts.....

### 4.1 Messaging.....

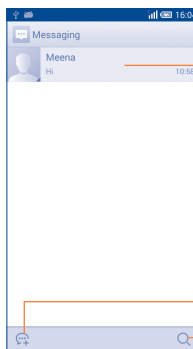
You can create, edit and receive SMS and MMS with this mobile phone.

To access this feature, touch  from the Home screen, then select **Messaging**.

 To consult messages stored in your SIM card, touch the **Menu** key from the Messaging screen, then touch **Settings\Manage SIM messages**.

#### 4.1.1 Write message

On the message list screen, touch the new message icon  to write text/multimedia messages.






- Touch to view the whole message thread.
- Touch & hold to activate delete mode.

- Touch to create a new message.
- Touch to search in all messages.



For saved contacts, touch the photo to open the Quick Contact panel to communicate with the contact. For unsaved contacts, touch the photo to add the number to your **Contacts**.

### Sending a text message

Enter the mobile phone number of the recipient in the **To** bar or touch  to add recipients and touch the **Type text message** bar to enter the text of the message. Touch the  icon to insert emoticons. When finished, touch  to send the text message.

An SMS message of more than 160 characters will be charged as several SMS. A counter will be on the right of the text box to remind you how many characters are allowed to be entered in one message.




Specific letters (accented) will also increase the size of the SMS, this may cause multiple SMS to be sent to your recipient.

### Sending a multimedia message

MMS enables you to send video clips, images, photos, animations, slides and sounds to other compatible mobiles and e-mail addresses.

An SMS will be converted to MMS automatically when media files (image, video, audio, slides, etc.) are attached or subject or email addresses are added.

To send a multimedia message, enter the recipient's phone number in the **To** bar and touch the **Type message** bar to enter the text of the message. Touch the **Menu** key to open the options menu, touch **Add subject** to insert a subject. Touch the  icon to attach a picture, video, audio and so on.


When finished, touch  to send the multimedia message.

### Attach options:


- **Capture picture** Access the Camera to capture a new picture for attaching.
- **Capture video** Access the Camcorder to record a new video for attaching.
- **Record audio** Enter the voice message recorder to record a voice message for attaching.
- **Contact** Enter Contacts to select a contact as an attachment.
- **Pictures** Access the Gallery application or File manager to select a picture as an attachment.
- **Videos** Access the Gallery application or File manager to select a video as an attachment.
- **Audio** Access to select an audio file as an attachment.
- **Calendar** Access the Calendar application to select one or more event(s) to attach.
- **Slideshow** Enter the Edit slide show screen, touch **Add slide** to create a new slide, and touch a currently existing slide to edit it (see following picture). Touch the **Menu** key to get more actions, like setting the slide duration, adding music, etc.



### 4.1.2 Manage messages

When receiving a message, a  icon will appear on the status bar as a notification. Drag down the status bar to open the Notification panel, touch the new message to open and read it. You can also access the Messaging application and touch the message to open it.

Messages are displayed in conversational order.

To reply to a message, touch the current message to enter the message composing screen, enter the text, then touch .

Touch and hold an SMS in message details screen to access the following message options:

- **Select text** Touch to select the message text to copy, cut, add to dictionary, etc.
- **Copy text** This option displays when the message is an SMS. Copy the current message content. You can then paste it into the enter bar of the new message you are going to compose.
- **Forward** Touch to forward the message to another recipient.
- **Delete message** Delete the current message.
- **Lock/Unlock message** Touch to lock/unlock the message so it can't/can be deleted if you reach the maximum number of stored messages.
- **View message details** Touch to view details of the message.
- **Save messages to SIM card** Touch to save the message to your SIM card.

### 4.1.3 Adjust message settings

You can adjust a range of message settings. From the Messaging application screen, touch the **Menu** key and touch **Settings**.

#### Storage

- **Delete old messages** Select to delete old messages when the maximum number of stored messages is reached.
- **Text message limit** Touch to set the number of text messages to be saved per conversation.
- **Multimedia message limit** Touch to set the number of multimedia messages to be saved per conversation.

#### Text Message (SMS) settings

- **Delivery reports** Select to request a delivery report for each text message you send.
- **Manage SIM messages** Touch to manage text messages stored on your SIM card.
- **Edit quick text** Touch to add or edit message templates.
- **SMS Service Center** Touch to edit or view the service center number.
- **Validity period** Touch to select the validity period, during that period, the network provider will try to send the message.

## Multimedia Message (MMS) settings

- **Delivery reports** Select to request a delivery report for each multimedia message you send.
- **Read reports** Select to request a report on whether each recipient has read a multimedia message sent by you.
- **Auto-retrieve** Select to download the full MMS message (including message body and attachment) automatically to your phone. Otherwise, download only the MMS message header.
- **Roaming auto-retrieve** Select to download the full MMS message (including message body and attachment) automatically when roaming. Otherwise, download only the MMS message header to avoid extra charges.
- **Creation mode** Select to change creation mode.
- **Maximum message size** Select to input the maximum message size.

## Notifications

- **Notifications** Select to display message notifications in status bar.
- **Select ringtone** Touch to select a ringtone as a new message notification tone.
- **Vibrate** Select to have phone vibrate as a notification when receiving a new message.

## WAP messages setting

- **WAP message enable** Touch to enable receipt of push message from network.

## Cell Broadcast settings

- **Cell broadcast** Mark the checkbox to enable receipt of cell broadcast messages.
- **Select CB ringtone** Touch to select CB ringtone when receive cell broadcast messages.
- **Vibrate** Select to have phone vibrate as a notification when receiving a new message.
- **Cell broadcast** Touch to select channels and configure languages.
- **Emergency Alerts** Touch to enter emergency alerts settings, include whether to show threats and alert Tone.

## 4.2 Gmail/Email

The first time you set up your phone, you can select to use an existing Gmail or to create a new Email account.

### 4.2.1 Gmail .....






As Google's web-based email service, Gmail is configured when you first set up your phone. Gmail on your phone can be automatically synchronized with your Gmail account on the web. Unlike other kinds of email account, each message and its replies in Gmail are grouped in your inbox as a single conversation; all emails are organized by labels instead of folders.

## To access Gmail


From the Home screen, touch  to enter the applications list, then touch **Gmail**.

## To create and send emails

- Touch the  icon from Inbox screen.
- Enter recipient(s)'s email address in **To** field, and if necessary, touch the **Menu** key and touch **Add Cc/Bcc** to add a copy or a blind copy to the message.
- Enter the subject and the content of the message.
- Touch the **Menu** key and select **Attach picture** or **Attach file** to add an attachment.
- Finally, touch the  icon to send.
- If you do not want to send the mail out right away, you can touch the **Menu** key and **Save draft** or touch **Back** key to save a copy. To view the draft, touch the  icon, then select **Drafts**.
- If you do not want to send or save the mail, you can touch the **Menu** key and then touch **Discard**.



To add a signature to emails, touch the **Menu** key and **Settings** from inbox screen, choose an account, then touch **Signature**.

## To receive and read your emails




When a new email arrives, you will be notified by a ringtone or vibration, and an icon  will appear on Status bar.

Touch and drag down the Status bar to display the Notification panel, touch the new email to view it. Or you can also access the Gmail Inbox label and touch the new mail to read it.

You can search for an email by sender, subject, label, etc.

- Touch the  icon from Inbox screen.
- Enter the keyword you want to search for in the searching box and touch .


## To reply or forward emails

- **Reply** When viewing an email, touch  to reply the sender of this mail.
- **Reply all** Touch  and select **"Reply all"** to send message to all people in a mail loop.
- **Forward** Touch  and select **"Forward"** to forward the received mail to other people.




## Managing Gmails by Labels


To conveniently manage conversations and messages, you can organize them using a Label.

To label a conversation when reading a conversation's messages, touch the **Menu** key and then choose **Move to**.

To view conversations by labels when viewing your inbox or another conversation list, touch the , then touch a label to view a list of conversations with that label.

Touch and hold an email to activate batch mode, and produce the following options:

-  Touch to archive the email message. To display the archived messages, you can touch in Inbox screen then touch All mail.
-  Touch to delete the email message.
-  Touch to mark an email message as read or unread.

Touch  to access the following options:

- **Move to** Touch to move the mail to other labels.
- **Change labels** Touch to change the label of the email message or conversation.
- **Add/Remove star** To assign a star or remove the star from the conversation.
- **Mark as (not) important** To mark the email as important or not important.
- **Mute** To mark the email mute.
- **Report spam** To report the email message/conversation as spam.
- **Report phishing** To report the email message/conversations phishing.

## Gmail settings

To manage Gmail settings, touch the **Menu** key and **Settings** in Inbox screen.

## General settings

- **Archive & delete actions** Touch to set the actions when touch archive and delete.
- **Swipe to archive** Mark the checkbox to enable Swipe to archive in conversation list.
- **Sender image** Mark the checkbox to show sender image beside name in conversation list.
- **Reply all** Touch to mark the checkbox to make the default responding to messages.
- **Auto-fit messages** Touch to mark the checkbox to shrink messages to fit the screen and allow zooming.
- **Auto-advance** Touch to select which screen to show after you delete or archive a conversation.
- **Message actions** Touch to show/hide message actions.
- **Confirm before deleting** Mark the checkbox and you need to confirm before deleting emails.
- **Confirm before archiving** Mark the checkbox and you need to confirm before archiving emails.
- **Confirm before sending** Mark the checkbox and you need to confirm before sending emails.

Touch an account and follow settings will show:

- **Inbox type** To set this inbox as the default or priority Inbox.
- **Notifications** Select to activate notification when a new email arrives.
- **Inbox sound & vibrate** Touch to set Ringtone, Vibrate and Notify once.
- **Signature** To add a signature text to the end of each mail you send.
- **Vacation responder** Touch to set the notification when on vacation.
- **Sync Gmail** Mark the checkbox to turn on/off Gmail sync.
- **Days of mail to sync** Touch to set the duration of days for mail sync.
- **Manage labels** Touch to open the Label screen, where you can manage synchronization and notifications.
- **Download attachments** Mark the checkbox to auto download attachments to recent messages via Wi-Fi.

#### 4.2.2 Email .....





In addition to your Gmail account, you can also set up external POP3 or IMAP email accounts in your phone.

To access this feature, touch  from the Home screen, then select **Email**.

An email wizard will guide you through the steps to set up an email account.

- Enter the email address and password of the account you want to set up.
- Touch **Next**. If the account you entered is not provided by your service provider in the phone, you will be prompted to go to the email account settings screen to enter settings manually. Alternatively, you can touch **Manual setup** to directly enter the incoming and outgoing settings for the email account you are setting up.
- Enter the account name and display name in outgoing emails.
- To add another email account, you can touch the **Menu** key and **Settings**. Touch **ADD ACCOUNT** on the right of the title to create it.

#### To create and send emails

- Touch the  icon from Inbox screen.
- Enter recipient(s) email address(es) in the **To** field.
- If necessary, touch the **Menu** key and touch **Add Cc/Bcc** to add a copy or a blind carbon copy to the message.
- Enter the subject and the content of the message.
- Touch the **Menu** key, touch **Attach file** to add an attachment.
- If you do not want to send the mail right away, you can touch the **Menu** key and **Save draft** or touch the **Back** key to save a copy.
- Finally, touch  to send.

- If you do not want to send the mail right away, you can touch the **Menu** key and **Save draft** or touch **Back** key.


## 4.3 Google Hangouts .....



Google's instant messaging service, Google Hangouts, lets you communicate with your friends whenever they are connected to this service.

To access this feature and sign in, touch  from the Home screen, then touch **Hangouts**. All friends added by using Google Hangouts from the web or phone will be displayed in your friends list.

### 4.3.1 Chatting with your friends

To start a chat, touch the name of a friend in your Friends list, then enter your message and finally touch .

You can invite other friends to join in a group chat by touching the **Menu** key and **New group Hangout** and then selecting the friend you want to add.

### 4.3.2 To add a new friend

From Friends list, touch the  icon to add a new friend.

Enter the name, email, number or Circle of the friend you want to add, and if the friend is not yet on Hangouts, the system will require to send invite by telling the friend via SMS or Gmail. A notification with this invitation will be showed in your friend' messaging or Gmail.

If your friends invite you to do video talk or they send you message in the first time, you could select Decline or Reply in response by touching Menu key and Hangout requests.

### 4.3.3 To start and close a chat

Touch one friend from friends list, you could send messages to your friends or have a video call;

After you join Google+: you could send pictures to everyone in the Google Hangouts.

When you want to end a chat, touch back key from Chatting screen directly.

If you want to sign out, touch the **Menu** key and **Settings\Sign out**.

### 4.3.4 To manage your friends

Besides adding new friends to your friends list, the following actions are available for your choice:

- **To view all friends:** By default, all your friends are displayed in Friends list. Touch your friend could start the conversation directly.

### 4.3.5 Settings

A series of settings are available for your selection by touching Menu key and **Settings** from chat list screen, and choose an account.

- **Profile photo** Touch to set or change your Google+ profile photo.
- **Share your status** Touch to set your mood, etc.
- **Notifications** Mark the checkbox to turn on the notifications.
- **Sound** Touch to set the hangouts message notification sound or Hangouts video call sound.
- **Vibrate** Mark the checkbox to activate the vibrate.
- **Customise invite** Touch to set the invites rights.
- **Customise new requests** Touch to enable that people in your circles can hangout with you or send you a request to Hangout.
- **Google+ profile** Touch to join Google+ to get more.
- **Confirm phone number** Touch to confirm phone number to help people find you and see your Google account name on Hangouts.
- **Blocked people** Touch to view block people.
- **Sign out** Touch to remove your accounts.

## 5 Calendar & Alarm clock & Calculator.....

### 5.1 Calendar ..... 29

Use Calendar to keep track of important meetings, appointments, etc.

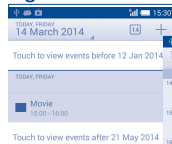
To access this function, touch  from the Home screen, then touch **Calendar**.

#### 5.1.1 Multimode view

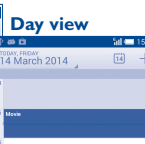
You can display the Calendar in daily, weekly, monthly, or agenda view.

Touch the date to change your Calendar view, and a drop-down menu will show for you to choose. Touch the  icon to return to Today's view.


**Agenda view**




**Day view**



**Week view**



**Month view**




In Agenda, Day or Week view touch an event to view its details.

Touch a day in Month view to open that day's events.

### 5.1.2 To create new events

You can add new events from any Calendar view.



- Touch the  icon to access new event edit screen.
- Fill in all required information for this new event. If it is a whole-day event, you can select **ALL DAY**.
- Invite guests to the event. Enter the email addresses of the guests you want to invite with commas to separate. The guests will receive an invitation from Calendar and Email.
- When finished, touch **DONE** from the top of the screen.

To quickly create an event from Day, Week or Month view screen, touch the empty spot to select the target area which will turn yellow, and tap again to create the new event.


Important options by touching the **Menu** key from Calendar main screen:

- **Refresh** To refresh the calendar.
- **Search** To search in the calendar.
- **Calendars to display** To show or hide, remove or add calendars.
- **Settings** To set a series of Calendar settings.

### 5.1.3 To delete or edit an event

To delete or edit an event, touch the event to enter details screen, touch the  icon to edit the event, and touch the  icon to delete.

### 5.1.4 Event reminder

If a reminder is set for an event, the upcoming event icon  will appear on Status bar as a notification when the reminder time arrives.

Touch and drag down the status bar to open the notification panel, touch event name to view Calendar notification list.

Touch the **Back** key to keep the reminders pending in the status bar and the notification panel.

## 5.2 Time .....





Your mobile phone has a built-in clock.

To access this function, touch  from the Home screen, then touch **Time**.

### 5.2.1 World clock

To access this function, touch  on the Time screen.

According to the delivery location, the system will set a default clock.

- Touch the  icon to add a time zone or enter the city name.
- Touch the  icon to select the time tone then touch **Delete**.

### 5.2.2 Alarm

**To set an alarm**

From Time screen, touch  to enter **Alarm** screen, touch  to add a new alarm.



Following options will show:


- **Label** Touch to set a name for the alarm.
- **Repeat** Touch to select days you want alarm to work.
- **Vibrate** Select to activate vibration.
- **Ringtone** Touch to select a ringtone for the alarm.
- **Time** Touch to set time.


When finished, touch **OK** to confirm.

Touch a currently existing alarm to enter alarm editing screen.

Touch  to delete the selected alarm.

### To adjust alarm settings

Touch the  icon from Alarm screen, the following options can now be adjusted:

- **Alarm in silent mode** Select to play alarm with sound or vibration even when the phone is in Silent mode.
- **Snooze duration** Touch to set temporary turn off time of an alarm.
- **Auto-silence** Touch to set the duration of alarms.
- **Volume Buttons** Touch to set side **Volume up/down** key behaviors when alarm sounds: **None**, **Snooze** or **Dismiss**.
- **Turn over to activate** Touch Turn over to activate  to choose the status Snooze or Stop. Touch the switch to turn on/off snoozing or stopping the alarm by turning over the phone.

### 5.2.3 Timer

From Time screen, touch  to enter **Timer** screen.

Touch **Start** to activate the timer.

Touch **Lap**, a list of records will show below according to the updated time.

Touch **Stop**, the total time and the lap time will not run until touch **Resume**.

Touch **Clear** to delete the record.

### 5.2.4 Countdown

From Time screen, touch  to enter **Countdown** screen.

Touch  icon to choose the ringtone. In the time scroll bar to set the time.

Touch **Start** to activate Countdown.

### 5.3 Calculator .....



With Calculator, you can solve many mathematical problems.

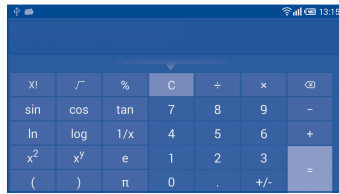
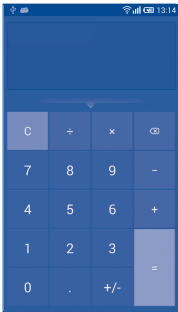
To access this function, touch  from the Home screen, then touch **Calculator**.

There are two panels available: Basic panel and Advanced panel.

To switch between panels:

- Turn the device to the landscape mode from basic panel to open the Advanced panel<sup>(1)</sup>.

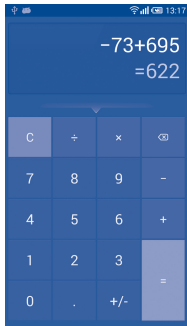
<sup>(1)</sup> If "Settings\Display\Auto-rotate screen" is off, this item will not display.



Enter a number and the arithmetic operation to be performed, enter the second number, then touch “=” to display the result. Touch  to delete digits one by one, touch and hold  to delete all at one time.

You can clear the calculator's history by touching the **Menu** key and touching **Clear history** or touching .

You can tap the triangle to see the history.



When some numbers or operations have been entered, touch and hold the entering bar to open a menu offering these further operations:

- **Cut** To cut selected text
- **Copy** To copy selected text
- **Paste** <sup>(1)</sup> To paste what you have previously copied to the entering bar

<sup>(1)</sup> Option will not appear unless copy or cut operation has been made.

# 6 Getting connected.....

To connect to the internet with this phone, you can use LTE networks or Wi-Fi, and your message will be automatically saved in the same thread.

## 6.1 Connecting to the Internet


### 6.1.1 LTE

The first time you turn on your phone with your SIM card inserted, it will automatically configure your network service: LTE.

To check the network connection you are using, touch the **Menu** key on the Home screen, then touch **Settings\More...\Mobile networks\Access Point Names** or **Network operators**.

#### To create a new access point

A new LTE network connection can be added to your phone with the following steps:

- Touch the **Menu** from the Home screen.
- Touch **Settings\More...\Mobile networks\Access Point Names**.
- Then touch the  icon to enter the required APN information.
- When finished, touch the **Menu** key and touch **Save**.

#### To activate/deactivate Data roaming

When roaming, you can decide to connect/disconnect to a data service.

- Touch the **Menu** key from the Home screen.
- Touch **Settings\More...\Mobile networks**.
- Select **Data roaming** to set roaming mode.
- When Data roaming is disabled, you can still perform data exchange with a Wi-Fi connection (refer to “6.1.2 Wi-Fi”).


#### To set preferred network mode

- Touch the **Menu** key from the Home screen.
- Touch **Settings\More...\Mobile networks**.
- Touch **Network Mode**.

### 6.1.2 Wi-Fi

Using Wi-Fi, you can connect to the Internet when your phone is within range of a wireless network. Wi-Fi can be used on your phone even without a SIM card inserted.

#### To turn Wi-Fi on and connect to a wireless network

- Touch the **Menu** key from the Home screen, then touch **Settings**.
- Touch the switch  beside Wi-Fi to turn on/off Wi-Fi.
- Touch **Wi-Fi**, the detailed information of detected Wi-Fi networks is displayed in the Wi-Fi networks section.
- Select a Wi-Fi network to connect. If the network you selected is secured, you are required to enter a password or other credentials (you may contact the network operator for details). When finished, touch **Connect**.


## To activate notification when a new network is detected

When Wi-Fi is on and the network notification is activated, the Wi-Fi icon will appear on the status bar whenever the phone detects an available wireless network within range. The following steps activate the notification function when Wi-Fi is on:

- Touch the **Menu** key and **Settings** from the Home screen.
- Touch **Wi-Fi**, then touch the **Menu** key and **Advanced** from Wi-Fi screen.
- Mark/Unmark the **Network notification** checkbox to activate/deactivate this function.

## To add a Wi-Fi network

When Wi-Fi is on, you may add new Wi-Fi networks according to your preference.

- Touch the **Menu** key and **Settings** from the Home screen.
- Touch **Wi-Fi**, and then touch .
- Enter the name of the network and any required network information.
- Touch **Save**.

When successfully connected, your phone will be connected automatically the next time you are within range of this network.

## To forget a Wi-Fi network

The following steps prevent automatic connections to networks which you no longer wish to use.

- Turn on Wi-Fi, if it's not already on.
- In the Wi-Fi screen, touch & hold the name of the saved network.
- Touch **Forget network** in the dialog that opens.

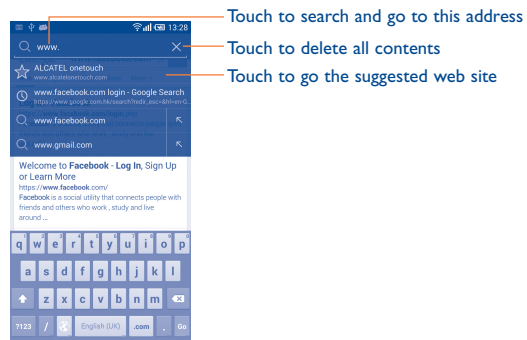
## 6.2 Browser.....

Using the Browser, you can enjoy surfing the Web.

To access this function, touch  from the Home screen, then touch **Browser**.

### To go to a web page

On the Browser screen, touch the URL bar at the top, enter the address of the web page, then confirm.



The URL bar will hide after a few seconds. To show the URL bar, you can touch and slide down the screen.

### To set homepage

- Touch the **Menu** key from Browser screen to display option menu, touch **Settings\General\Set homepage**.
- Choose a page or most visited websites as your homepage.
- If you choose **Other**, enter the URL of the website you want to set as your homepage, touch **OK** to confirm.

## 6.2.1 Viewing web pages


When opening a website, you can navigate on web pages by sliding your finger on the screen in any direction to locate the information you want to view.

### To zoom in/out of a web page

Pinch/Spread your finger on the screen to zoom out/in of the web page.



To quickly zoom into a section of a web page, double-tap on the section you want to view. To return to normal zoom level, double-tap again.

### To find text on a web page

- Touch the **Menu** key from web page screen, then touch **Find on page**.
- Enter the text or phrase you want to find.
- The first word with matching characters will be highlighted on the screen, and subsequent matches will be boxed.
- Touch the up or down arrow to switch to the previous or next matching items.
- When finished, you can touch  or the **Back** key to close the search bar.




### Further operations for the text on a web page

You can copy, share or search the text from a web page:

- Touch and hold the text to highlight the text.
- Move two tabs to select the text.
- Touch **SELECT ALL** to select all words in this web screen.
- Touch the  icon to show further actions, including share and search on the page or the web.
- When finished, touch  or the **Back** key to deactivate the mode.

### To open new window/switch between windows

Multiple windows can be opened at the same time for your convenience.

- Touch  to open all windows' thumbnails.
- Slide up and down to view all windows, touch one to view it.
- Touch  to open a new window.
- Touch Menu key and **New incognito tab** to open a window without any trace.
- To close a window, touch  on the window you want to close or slide it sideways.

### Other options

- **Refresh** To refresh the current page.
- **Forward** To forward the pages you have opened.
- **Bookmarks** To see the bookmarks and browsing history.
- **Save to bookmarks** To add the current website page as bookmark.
- **Share page** To share the current page with your friends via various ways, like Message, Email, Bluetooth, etc.
- **Find on page** To input contents you want to find on the current page.
- **Request desktop site** To enable/disable computer version websites.
- **Save for offline reading** To save the web page for offline reading. You can find it by touching the **Menu** key, then **Bookmarks\ Saved pages**.
- **Exit** To close all tabs and exit.



Touch the icon on the left of the URL, you can view more information about the current page.

## 6.2.2 Manage links, history, downloads

### To manage a link, phone number or address displayed on a web page

- **Link** Touch the link to open the web page.  
Touch and hold the link to open options for further operation, like open in new window, save link, share link, copy link, etc.
- **Phone number** Touch to call the phone number.
- **Address** Touch to open Google Maps and locate the address.


### To view Browser history

- Touch the **Menu** key from Browser screen.
- Touch **Bookmarks**.
- Touch **HISTORY** tab to view browser history.
- Touch **Most visited** to view your most frequently visited pages.

### To download a web application/view your downloads

Before downloading a web application, you need to enable your phone to install web applications (Touch the **Menu** key from the Home screen, touch **Settings**\Security, mark checkbox of **Unknown sources**, finally touch **OK** to confirm).

To download an item, touch the item or the link you want to download.

To cancel a download, touch the downloaded item from the Notification panel, select the item to be canceled, and touch  to confirm.



To view items you have downloaded, touch , then touch the application **Downloads**.

## 6.2.3 Manage bookmarks



### To bookmark a web page

- Open the web page you want to bookmark.
- Touch the **Menu** key and **Save to bookmarks**, or from the **HISTORY** screen, touch the star beside the URL.
- Enter the name and the location if needed and touch **OK** to confirm.

### To open a bookmark

- Touch the **Menu** key and **Bookmarks**, or touch the  icon and touch  to enter the **BOOKMARKS** screen.
- Touch the bookmark you want to open.
- You can also touch and hold to display the options screen, then touch **Open** or **Open in new tab**.

### To edit a bookmark

- Touch the **Menu** key and **Bookmarks**, or touch the  icon and touch  to enter the **BOOKMARKS** screen.
- Touch and hold the bookmark you want to edit.
- Touch **Edit bookmark**, and enter your changes.
- When finished, touch **OK** to confirm.

### Touch and hold a bookmark in the bookmark list to view these additional options:

- **Add shortcut to home** To add a bookmark shortcut to the Home screen.
- **Share link** To share the bookmark.
- **Copy link URL** To copy the bookmark link.
- **Delete bookmark** To delete a bookmark.
- **Set as homepage** To set this page as the homepage.

## 6.2.4 Settings

A series of settings are available for your adjustment. To access Browser settings, touch the **Menu** key from Browser screen, and touch **Settings**.

### General

- **Set homepage** Touch to set homepage.
- **Form auto-fill** Mark the checkbox to fill out web forms with a single touch.
- **Auto-fill text** Touch to set up text to auto-fill in web forms.

### Privacy & security

- **Clear cache** Touch to clear locally cached content and databases.
- **Clear history** Touch to clear the browser history.
- **Show security warnings** Mark to show warning if there is a problem with a site's security.
- **Accept cookies** Mark to allow sites to save and read cookie data.
- **Clear all cookie data** Touch to clear all browser cookies.
- **Remember form data** Mark the checkbox to remember data in forms for later use.
- **Clear form data** Touch to clear all the saved form data.
- **Enable location** Mark to allow sites to request access to your location.
- **Clear location access** Touch to clear location access for all websites.
- **Remember passwords** Mark to save usernames and passwords for websites.
- **Clear passwords** Touch to clear all saved passwords.

## Accessibility

- **Force enable zoom** Mark to control a website's zoom as you prefer.
- **Text scaling** Slide to change the size of the text display.
- **Zoom on double-tap** Slide to change the magnification level while double-tap the page.
- **Minimum font size** Slide to change the minimum font size.
- **Inverted rendering** Mark to display pages in invert color.
- **Contrast** Slide to change pages contrast. It is grey, unless you mark **Inverted rendering**.

### Advanced

- **Set search engine** Touch to select a search engine.
- **Open in background** Mark to open new windows behind the current one.
- **Enable JavaScript** Mark to enable JavaScript.
- **Allow multiple tabs per app** Mark the checkbox to set one application may use more than one tab.
- **Enable plug-ins** Touch to set enable plug-ins.
- **Website settings** Touch to view advanced settings for individual websites.
- **Default zoom** Touch to select the magnification level by default.
- **Open pages in overview** Mark the checkbox to show overview of newly-opened pages.
- **Auto-fit pages** Mark to format web pages to fit the screen.
- **Block pop-ups** Mark the checkbox to prevent pop-up windows.
- **Text encoding** Touch to select the character-encoding standard.
- **Reset to default** Touch to clear all browser data and to reset all settings to default.

## Bandwidth management

- **Search result preloading** Touch to enable/disable browser to preload search results in the background.
- **Web page preloading** Touch to enable/disable browser to preload web page in the background.
- **Load images** Mark to display images on web pages.

## Labs

- **Quick controls** Mark to enable quick controls.
- **Fullscreen** Mark to use the fullscreen mode.

## 6.3 Connecting to Bluetooth devices <sup>(1)</sup>

Bluetooth is a short-range wireless communication technology that you can use to exchange data, or connect to other Bluetooth devices for various uses.

To access this function, touch the **Menu** key from the Home screen, then touch **Settings\Bluetooth**, your advice and other available ones will show on the screen.

### To turn on Bluetooth

- Touch the **Menu** key from the Home screen, then touch **Settings**.
- Touch  to activate/deactivate this function.

<sup>(1)</sup> You are recommended to use ALCATEL ONETOUCH Bluetooth headsets, which have been tested and proved compatible with phone. You can go to [www.alcatelonetouch.com](http://www.alcatelonetouch.com) for more information about ALCATEL ONETOUCH Bluetooth headset.

To make your phone more recognizable, you can change your phone name which is visible to others.

- Touch the **Menu** key from the Home screen,
- Touch **Settings\Bluetooth**.
- Touch the **Menu** key and **Rename phone**.
- Enter a name, and touch **Rename** to confirm.

### To make device visible


- Touch the **Menu** key from the Home screen.
- Touch **Settings\Bluetooth**.
- Touch your advice to make it visible or invisible.
- Touch the **Menu** key and **Visibility timeout** to select the visible time.

### To pair/connect your phone with a Bluetooth device

To exchange data with another device, you need to turn Bluetooth on and pair your phone with the Bluetooth device with which you want to exchange data.

- Touch the **Menu** key from the Home screen.
- Touch **Settings\Bluetooth**.
- Touch **SEARCH FOR DEVICES**.
- Touch a Bluetooth device you want to be paired with in the list.
- A dialog will popup, touch **Pair** to confirm.
- If the pairing is successful, your phone connects to the device.

### To disconnect/unpair from a Bluetooth device

- Touch the Settings icon  beside the device you want to unpair.
- Touch **Unpair** to confirm.



## 6.4 Connecting to a computer<sup>(1)</sup>

With the USB cable, you can transfer media files and other files between your microSD card/internal storage and the computer.

### To connect/disconnect your phone to the computer

To connect:

- Use the USB cable that came with your phone to connect the phone to a USB port on your computer. You will receive a notification that the USB is connected.
- Open the Notification panel and touch **USB connected**, then choose a way in the dialog that opens to confirm that you want to transfer files.

To disconnect (for mass storage):

- Open the Notification panel and touch **USB connected**.
- Touch to cancel **USB mass storage** in the dialog that opens.



Before using MTP, make sure that the driver (Windows Media Player 11 or higher version) has been installed.

To locate the data you have transferred or downloaded in the internal storage, touch **File Manager**. All data you have downloaded is stored in **File Manager**, where you can view media files (videos, photos, music and others), rename files, install applications into your phone, etc.

<sup>(1)</sup> You can change your default connection mode via **Settings\Storage**. Touch the **Menu** key **USB computer connection**. Some operations which are available under mass storage are not usable under MTP and PTP.

## To safely remove the microSD card from your phone

The microSD card can be removed from your phone any time the phone is powered off. To remove the microSD card while the phone is on, you must unmount the storage card from the phone first, to prevent corrupting or damaging the storage card.

- Touch the **Menu** key from the Home screen,
- Touch **Settings\Storage**.
- Touch **Unmount SD card**.

You can now safely remove the microSD card from the phone.

### To format a microSD card

- Touch the **Menu** key from the Home screen,
- Touch **Settings\Storage**.
- Touch **Erase SD card**. On the screen a popup warns you that formatting the microSD card will erase its contents, touch **Erase SD card**.

## 6.5 WiFi Hotspot and USB Tethering

You can share your phone's mobile data connection with a single computer via a USB cable (USB tethering) or with up to eight devices at once by turning your phone into a portable Wi-Fi hotspot.



The functions below may incur additional network charges from your network operator. Extra fees may also be charged in roaming areas.

## To share your phone's data connection via USB

Use the USB cable that along with your phone to connect the phone to a USB port on your computer.

- Touch the **Menu** key from the Home screen.
- Touch **Settings**\More...\b>Tethering & portable hotspot.
- Mark\unmark the checkbox of **USB tethering** to activate/deactivate this function.

## To share your phone's data connection as a portable Wi-Fi hotspot

- Touch the **Menu** key from the Home screen.
- Touch **Settings**\More...\b>Tethering & portable hotspot.
- Mark\unmark the checkbox of **Portable Wi-Fi hotspot** to activate/deactivate this function.

## To rename or secure your portable hotspot

When Portable Wi-Fi hotspot is activated, you could change the name of your phone's Wi-Fi network (SSID) and secure its Wi-Fi network.

- Touch the **Menu** key from the Home screen.
- Touch **Settings**\More...\b>Tethering & portable hotspot.
- Touch **Configure Wi-Fi hotspot** to change the network SSID or set your network security.
- Touch **Save**.

## To play media files on device with TV LINK feature

You can share your phone's data such as music, video file with TV by enabling the TV LINK.


- Touch the **Menu** key and touch **Settings**\Display\TV LINK.

To use TV LINK, you must turn on Wi-Fi.

## 6.6 Connecting to virtual private networks

Virtual private networks (VPNs) allow you to connect to the resources inside a secured local network from outside that network. VPNs are commonly deployed by corporations, schools, and other institutions so that their users can access local network resources when not inside that network, or when connected to a wireless network.

### To add a VPN

- Touch the **Menu** key from the Home screen.
- Touch **Settings**\More...\b>VPN settings and then touch .
- In the screen that opens, follow the instructions from your network administrator to configure each component of the VPN settings.
- Touch **Save**.

The VPN is added to the list on the VPN settings screen.



Before adding a VPN, you should set a PIN code or password for your phone.

### To connect/disconnect to a VPN

To connect to a VPN:

- Touch the **Menu** key from the Home screen.
- Touch **Settings**\More...\b>VPN settings.
- VPNs you have added are listed; touch the VPN you want to connect with.
- In the dialog that opens, enter any requested credentials and touch **Connect**.

To disconnect:

- Open the Notification panel and touch the resulting notification for the VPN disconnection.

## To edit/delete a VPN

To edit a VPN:

- Touch the **Menu** key from the Home screen.
- Touch **Settings\More...\VPN settings**.
- VPNs you have added are listed; touch & hold the VPN you want to edit.
- Touch **Edit profile**.
- After finished, touch **Save**.


To delete:

- Touch and hold the VPN you want to delete, in the dialog that opens, touch **Delete profile**.

## 7 Google Play Store <sup>(1)</sup>.....

Google Play Store is an online software store, where you can download and install applications and games to your Android Powered Phone.

To open Google Play Store:

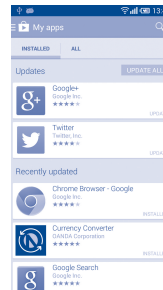
- Touch  from the Home screen, then touch **Play Store**.
- For the first time you access Google Play Store, a screen with terms of service pops up for your attention.

Touch the **Menu** key then touch **Help** to enter Google Play Store help page for more information on this function.

### 7.1 Locate the item you want to download and install

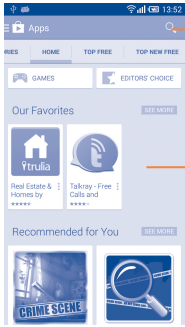
Google Play Store home page provides several ways to find applications. It showcases applications and games in categorized listings.

Touch the  icon at the top left corner and **My apps** to see all your downloads.



<sup>(1)</sup> Depending on your country and operator.

Touch a category on Google Play Store screen to browse its contents. You can also select a subcategory if there is any. Within each category you can select to view items sorted by Top paid, Top free, Top grossing, etc




Touch to search in **Play Store**.


Slide left and right to see all categories.

Touch the Google Play Store icon  on the top left of the screen or touch **Back** key to return to the previous screen.

## 7.2 Download and install

### To download & install


- Navigate to the item you want to download, and select to enter the details screen from which you can read its description, overall rating or comments, view developer's information, etc.
- Touch **Install** to preview the functions and data the application can access on your phone if you install it.
- Touch **Accept**.
- The progress of the download will show on the details screen, touch  to stop downloading the item. You can also access this screen through Notification panel.

- After download and installation have finished, you will see a notification icon  on the status bar.



Be especially cautious with applications that have access to many functions or to a significant amount of your data. Once you accept, you are responsible for results of using this item on your phone.

### To open the application you have downloaded

- On Google Play Store screen, touch  and **My apps**.
- Touch the installed application in the list, then touch **Open**.

### To buy an application<sup>(1)</sup>

On Google Play Store, some applications are labeled as free, while some of them are to be paid for before downloading and installing.


- Touch the application you want to buy.
- Touch the price on the upper-right of the screen to preview the functions and data the application can access on your phone if you install it.
- Touch **Continue** to confirm.
- When making your first purchase, you are required to input your credit card information and to log in to Google payment and billing service.
- If your account has multiple credit card accounts, select one to proceed.
- Select the Terms of service link and read the document. When finished, touch **Back** key.
- Mark the checkbox if you agree with the terms of service.
- Touch **Buy now** at the bottom of the screen.

When finished, Android downloads the application.

<sup>(1)</sup> Google Paid applications may not be available to users in some countries.

## To request a refund

If you are not satisfied with the application, you can ask for a refund within 15 minutes of the purchase. Your credit card will not be charged and the application will be removed. If you change your mind, you can install the application again, but you will not be able to request a refund.

- Touch  and **My apps** from Google Play Store screen.
- Touch the application that you want to uninstall and refund.
- Touch **Refund** to uninstall the application and refund. If the button becomes **Uninstall**, your trial period has expired.
- In the survey form, select the answer that best matches your reason, and touch **OK**.

## 7.3 Manage your downloads

After you downloaded and installed an application, the following further operations are available for your selection.


### View

On Google Play Store screen, touch  and **My apps**.

### Uninstall

On Google Play Store screen, touch  and **My apps**. Touch the application you want to uninstall to enter the details screen, touch **Uninstall**, and finally touch **OK** to confirm.

### Refund

On Google Play Store screen, touch  and **My apps**. Touch the application you want to uninstall for a refund, touch **Refund**, and finally touch **OK** to confirm.

## Update notification

On Google Play Store screen, touch  and **My apps**. Touch **Menu** key and **Settings**\**Notifications** to enable update notification.

## Auto update

Touch **Menu** key and **Settings**\**Auto-update apps** to enable this function. To auto update one specific application, mark the checkbox of **Auto-update apps at any time**. **Do not auto-update apps** or **Auto-update apps over Wi-Fi only** from the details screen,

## Rate and review

Open the details screen for an application, touch the stars ★★★★★ beside **Rate this app** to award and input comments, touch **Submit** to confirm.

## Flag

You can report an inappropriate application to Google Play Store by flagging it. Open the details screen for the application, scroll to the bottom and touch **Flag as inappropriate**, enter the reason and finally touch **Submit**.

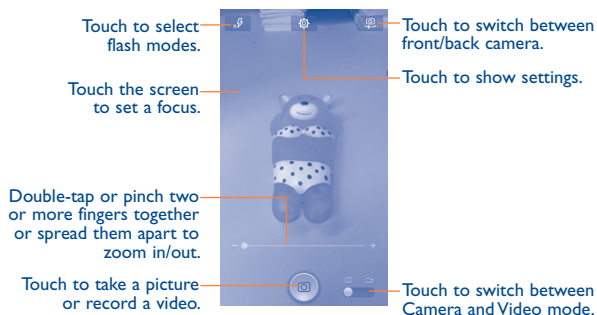
# 8 Multimedia applications

## 8.1 Camera/Camcorder


Your mobile phone is fitted with a Camera and a Camcorder for taking photos and shooting videos.

Before using the Camera or Camcorder, please be sure to open the protective lens cover before use to avoid it affecting your picture quality.

To access this function, touch  from the Home screen and then touch **Camera**.





### To take a picture

The screen acts as the viewfinder. First position the object or landscape in the viewfinder, touch the screen to focus if necessary, touch the  icon to take the picture which will be automatically saved.

### To shoot a video

Switch Camera mode to Video mode. First position the object or landscape in the viewfinder, and touch the  icon to start recording. Touch the  icon to stop recording. The video will be automatically saved.

### Further operations when viewing a picture/video you have taken

- Slide left to quick view the picture you taken.
- Touch the  icon then gmail, Bluetooth, MMS, etc to share the photo or video you have taken.
- Touch the  icon to access **Gallery**.
- Touch the **Back** key to return to **Camera** or **Camcorder**.

### 8.1.1 Settings in framing mode

Before taking a photo, touch the  icon you can adjust a number of settings in framing mode.

- **HDR** Touch to enable the HDR mode.
- **Panorama** Touch to enable the panorama mode.
- **Smile** Touch to enable the smile mode. When activate, the photo will be captured automatically once smile is detected.
- **Night** Touch to enable the night mode.
- **Sports** Touch to enable the sports mode.
- **QR Code Scan** Touch to scan QR code.
- **Full screen** Touch to turn on/off full screen preview mode.
- **Shutter sound** Touch to turn on/off the shutter sound.
- **Advanced** Touch to turn on/off GPS tag and set picture size, etc.
- **Restore defaults** Touch to reset to default settings.

Switch to front camera, touch the  icon to access camera settings and the following options will display for your choice:

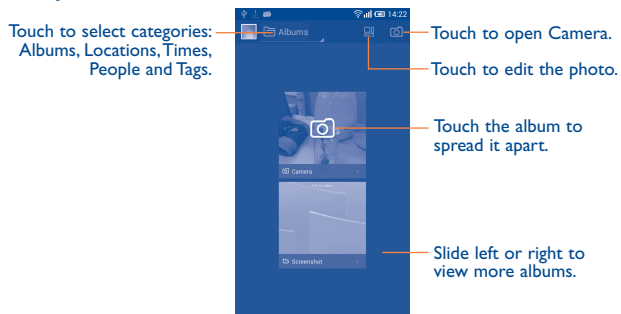
- **Expression** Touch to turn on expression (4-shot) function and once four photos taken, the phone will automatically synthesize and save in one picture.
- **Night** Touch to enable the night mode.

## 8.2 Gallery .....



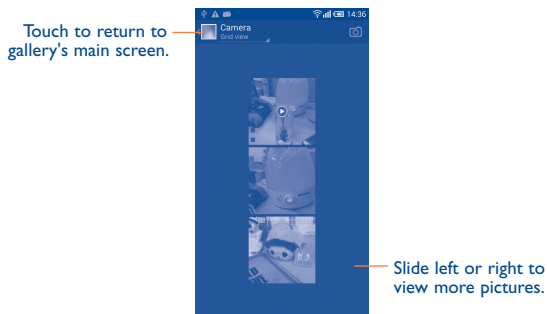
Gallery acts as a media player for you to view photos and playback videos. In addition, a set of further operations to pictures and videos are available for your choice.

To access this function, touch  from the Home screen, then touch **Gallery**.



## To view a picture/play a video

Pictures and videos are displayed by albums in **Gallery**.



- Touch an album and all pictures or videos will spread the screen.
- Touch the picture/video directly to view or play it.
- Slide left/right to view previous or next pictures/videos.

## Working with pictures

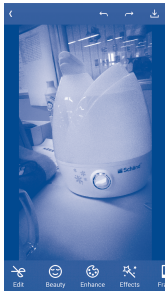
Gallery provides a multi-select function, so that you can work with pictures/videos in batches.

You can touch one album, then slide left or right to view the pictures.

Touch a picture you want to work on, touch the  icon to delete selected one. Touch  to share selected ones.

Touch the **Menu** key to set them as contact ID or wallpaper, etc.

Touch **Menu/Edit** from full-screen picture view, more options will display for you to choose.



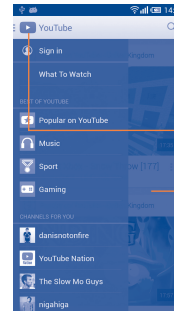
## 8.3 YouTube

YouTube is an online video-sharing service where the user can download, share and view videos. It supports a streaming function that allows you to start watching videos almost as soon as they begin downloading from the Internet.

To access this function, touch  from the Home screen, then touch **YouTube**.



As an online video service, your phone must have a network connection to access YouTube.



Touch to search for a video.

Touch to show videos' categories.

Touch to play the video and to show more information.

By touching the **Menu** key from YouTube screen, you can set General settings for YouTube. For details about these features, please visit the YouTube website: [www.YouTube.com](http://www.YouTube.com).

### 8.3.1 Watch videos

Touch a video to play it. In the Playing screen, you can view information and comments of the video, and also reach to more related ones. You can also rate, share, label as favorite, create a new playlist, etc from this screen.

To exit video playing screen, touch **Back** key to return to the video list.

## 8.4 Music

Using this menu, you can play music files stored on the microSD card or phone storage in your phone. Music files can be downloaded from computer to microSD card using a USB cable.

To access this function, touch  from the Home screen, then touch **Music**.

You will find four categories: **Artists**, **Albums**, **Songs** and **Playlists**. Touch a category and view the list



### 8.4.1 Playing music

Touch a song to play the song.



- 1 Touch to play the current playlist in shuffle mode (tracks are played in random order).
- 2 Touch to skip to the previous track in the album, playlist, or shuffle.
- 3 Touch to pause/resume playback.
- 4 Touch to skip to the next track in the album, playlist, or shuffle.
- 5 Touch to toggle repeat mode: Repeating all songs, Repeating current song, or Repeat is off.
- 6 Touch to show the displayed songs.
- 7 Touch to hide/display lyrics.



While playing songs with Music, the operation of pause, play or skip is still available even if the screen is locked.

### 8.4.2 Adjust sound effects

Touch the **Menu** key and select **Sound effects** from the playing screen to enable and adjust sound effects.

### 8.4.3 Working with playlists

Playlists allow you to conveniently organize all songs stored in the phone storage or SD card.

You can create a new playlist, add a song to the list, and delete or rename a playlist.

#### To create a playlist

Touch **Recently added** from the Playlists screen, touch the **Menu** key and then select **Save as playlist**, enter the name and finally touch **Save**.

#### To delete a playlist

Touch and hold a playlist to show the menu, then touch **Delete**.

#### To rename a playlist

Touch and hold a playlist to show the menu, then touch **Rename**. When finished, touch **Save** to confirm.

# 9 Google Maps.....




## 9.1 Get My Location

### 9.1.1 Choose a data source to decide My Location

Touch the **Menu** key from the Home screen, touch **Settings\Location access**.

Touch the switch  beside **Access to my location** to set Wi-Fi or mobile networks as my location data source. Or mark the checkbox of **GPS satellites** to set GPS as My Location data source.

### 9.1.2 Open Google Maps and view My Location

Touch  from the Home screen, then touch **Maps**.

Touch  icon on the map to view **My Location**.

The map will then center on a blue dot with a blue circle around. Your actual position is within the blue circle.




To move the map, drag the map with your finger.

To zoom in and out of a map, pinch or spread your fingers, or you can also zoom in by double-tapping a location on screen.

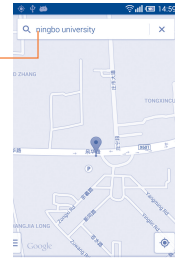
## 9.2 Search for a location

While viewing a map, touch the search icon  to activate search function.

In the search box, enter an address, a city or a local business.

Touch  and in a while your search results will appear on the map as red dots. You can touch one to show a label.

Touch to show all search results list.



Touch to show more information.






## 9.3 Get driving, public transport or walking directions

### 9.3.1 Get suggested routes for your trip


Touch the  icon from Maps screen.

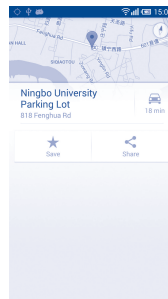


- Touch enter bar to edit your start point by one of the following methods: entering an address or using My Location.
- Do likewise for your end point.
- To reverse directions, touch the  icon.
- Then select a transport mode: driving by car, using public transport, or walking directions.
- A couple of suggested routes will appear in a list. Touch any routes to view their respective detailed directions.
- Touch the  icon for route options to avoid motorways and tolls when choosing driving by car or for editing the departure and arrival time when using public transport.

To get reverse directions for a route you've already made, simply touch the  icon. No need to enter your start point and end point again.

## 9.4 Share a location

- Touch & hold a location on a map.
- Touch the information at the bottom then touch the  icon to share the location.



## 9.5 Map view

Touch the  icon at the left lower corner, you could switch the map view to **Traffic**, **Public transport**, **Cycling** or **Satellite** view.

# 10 Others.....

## 10.1 File Manager.....



To access this function, touch  from the Home screen, then touch **File Manager**.

**File Manager** displays all data stored on the phone and the microSD card, including applications, media files downloaded from Google Play Store, YouTube or other locations; videos, pictures or audios you have captured; other data transferred via Bluetooth, USB cable, etc.

When you download an application from PC to phone/microSD card, you can locate the application on File Manager, then touch it to install it in your phone.

**File Manager** allows you to perform and be really efficient with the following common operations: create (sub) folder, open folder/file, view, rename, move, copy, delete, play, share, etc.

## 10.2 Sound Recorder.....



To access this function, touch  from the Home screen, then touch **Sound Recorder**.

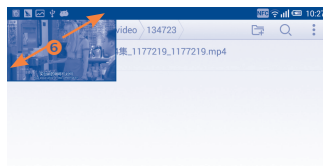
**Sound Recorder** allows you to record voice/sound for seconds/hours.

## 10.3 Videos .....



To access this function, touch  from the Home screen, then touch **Videos**.

**Videos** allows you view media in a pop up window, so your video stays at the front of the screen<sup>(1)</sup>.



- 1 Touch to loop the video.
- 2 Touch to view the video in a pop window at the front of the screen.
- 3 Touch to view in full screen mode.
- 4 Slide to the right to fast forward for 30 seconds.
- 5 Slide to the left to slow-reverse the video for 10 seconds.
- 6 Pinch to zoom in/out.

<sup>(1)</sup> The popup video window will close when Camera mode is activated.

## 10.4 Radio .....



Your phone is equipped with a radio <sup>(1)</sup> with RDS <sup>(2)</sup> functionality. You can use the application as a traditional radio with saved channels or with parallel visual information related to the radio program on the display if you tune to stations that offer Visual Radio service.

To access this function, touch  from the Home screen, then touch **FM Radio**.



To use it, you must plug in your headset, which works as an antenna connected with your phone.



<sup>(1)</sup> The quality of the radio depends on the coverage of the radio station in that particular area.

<sup>(2)</sup> Depending on your network operator and market.

## Available options:

- **Save channel** Save the current tuned station to the channels list.
- **Edit name** Edit the channel name.
- **Audio mode** Listen to the radio using loudspeaker or headset.
- **Delete** Delete the channel
- **Enter frequency** Enter the frequency manually.
- **Exit** Turn off the radio.

## 10.5 Torch .....



To access this function, touch  from the Home screen, then touch **Torch**.

**Torch** is an application which can provide power light for your convenience and you can select to turn on/off or adjust the brightness as needed.

## 10.6 Notes.....



To access this function, touch  from the Home screen, then touch **Notes**.

Use **Notes** to note down inspirations, ideas, excerpts, things to do and all those things you may want to keep for future reference.

Existing notes can be sent via Bluetooth, message or Email.

## 10.7 Setup Wizard

To access this function, touch  from the Home screen, then touch **Setup Wizard**.

Setup Wizard helps set up your phone in multiple ways: language, input method, mobile data connection, account setup and synchronization, system update, etc. This will also be performed the first time you power on your phone.

## 10.8 Other applications <sup>(1)</sup>

The previous applications in this section are preinstalled on your phone. To read a brief introduction of the preinstalled 3rd party applications, please refer to the leaflet provided with the phone. You can also download thousands of 3rd party applications by going to Google Play Store on your phone.

<sup>(1)</sup> Application availability depends on country and operator.

## 11 Settings

To access this function, touch **Menu** key and **Settings** from Home screen.

### 11.1 Wireless & network

#### 11.1.1 Wi-Fi

Using Wi-Fi you can now surf the Internet without using your SIM card whenever you are in range of a wireless network. The only thing you have to do is to enter the **Wi-Fi** screen and configure an access point to connect your phone to the wireless network.

For detailed instructions on using Wi-Fi, please refer to “**6.1.2 Wi-Fi**”.

#### 11.1.2 Bluetooth

Bluetooth allows your phone to exchange data (videos, images, music, etc.) in a small range with another Bluetooth supported device (phone, computer, printer, headset, car kit, etc.).

For more information on Bluetooth, please refer to “**6.3 Connecting to Bluetooth devices**”.

#### 11.1.3 Call settings

Please refer to “**3.1.6 Call settings**”.

#### 11.1.4 Data usage

Touch the **Menu** key you can view settings related to your data usage. Mark the checkbox of set mobile data limit. Your mobile data connection will be disabled when the specified limit is reached. You can also choose a data usage cycle to view the statistics and related applications of used data by your phone.



Data usage is measured by your phone, and your carrier may count differently. Please consider using a conservative limit.

### 11.1.5 More... \Airplane mode

Mark the checkbox of **Airplane mode** to simultaneously disable all wireless connections including Wi-Fi, Bluetooth and more.

### 11.1.6 More... \VPN settings

A mobile virtual private network (mobile VPN or mVPN) provides mobile devices with access to network resources and software applications on their home network, when they connect via other wireless or wired networks. Mobile VPNs are used in environments where workers need to keep application sessions open at all times, throughout the working day, as the user connects via various wireless networks, encounters gaps in coverage, or suspend-and-resumes their devices to preserve battery life. A conventional VPN cannot survive such events because the network tunnel is disrupted, causing applications to disconnect, time out, fail, or even the computing device itself to crash.

For more information on VPN, please refer to “**6.6 Connecting to virtual private networks**”.

### 11.1.7 More... \Tethering & portable hotspot

This function allows you to share your phone's mobile data connection via USB or as a portable Wi-Fi access point (Please refer to “**6.5 Sharing your phone's mobile data connection**”).

### 11.1.8 More... \Mobile networks

#### Data enabled

If you do not need to transmit data on all mobile networks, unmark the checkbox of **Data enabled** to avoid incurring significant charges for data use on local carrier mobile networks, particularly if you do not have a mobile data agreement.

#### Data roaming

If you don't need to transmit data on other carriers' mobile networks, unmark the checkbox of **Data roaming** to avoid incurring significant roaming charges.

#### Network Mode

You can set your preferred network mode, such as GSM/WCDMA, LTE etc.

#### Access Point Names

You can select your preferred network with this menu.

#### Network operators

You can select a network operator.

## 11.2 Device

### 11.2.1 Gestures

The devices enable you to mark the following gestures:

- **Turn over to mute** Mark the checkbox to mute ringtone by turning the phone over such as alarms and incoming call, etc.
- **Turn over to activate** Touch to set snooze or dismiss when turn over the device.
- **Put device nearby ear** Mark the checkbox to activate the function which supports to call the contact directly in someone contact detail or SMS/MMS conversation mode .
- **Double click screen** Mark the checkbox to enable double click screen to unlock when screen light off.

### 11.2.2 Sound

Use the Sound settings to configure many aspects of call and notification ringtones, music, and other audio settings.

- **Volume** Touch to set volume for Media, Ringtone, Notifications and Alarm.
- **Headset mode** Mark the checkbox to enable headset mode; Ringtone will only be heard from headset if it is plugged in.
- **Silent mode** Touch to silence all sounds (mute or vibrate) except media & alarms.
- **Power on & off ringtone** Mark the checkbox to silent power on & off ringtone.
- **Phone ringtone** Touch to set your default incoming call ringtone.
- **Vibrate when ringing** Mark the checkbox to enable vibrate and ringtone at the same time.
- **Default notification** Touch to set the default sound for notifications.
- **Dial pad touch tones** Mark the checkbox to enable playing tones when using dial pad.
- **Audible selection** Mark the check box to enable playing sound when making screen selection.
- **Screen lock sound** Mark the checkbox to enable playing sounds when locking and unlocking the screen.
- **Haptic feedback** Mark the checkbox to activate vibration when touching keys.



### 11.2.3 Display

- **Automatic brightness** Touch to enable automatically adjusts the brightness of the screen.
- **Wallpaper** Touch to set the wallpaper.
- **Auto-rotate screen** Touch to select whether rotate screen automatically or not.
- **Sleep** Touch to set screen timeout.
- **Daydream** Touch to set the Daydream.
- **Font size** Touch to set the font size.
- **TV LINK** Touch to enable TV LINK.

### 11.2.4 Lock settings

#### Screen lock

- **None** Touch to disable screen unlock security.
- **Slide** Touch to enable slide unlock mode.
- **Face Unlock** Touch to look at your phone to unlock screen.
- **Pattern** Touch to draw pattern to unlock screen.
- **PIN** Touch to enter a numeric PIN to unlock screen.
- **Password** Touch to enter a password to unlock screen.
- **Double click screen** Mark the checkbox to enable double click to unlock screen.

#### Lock Options

Mark the checkbox to custom weather, message and components on the lock screen.

### Owner info

Touch to input owner information which will display on the lock screen.

### 11.2.5 LED indicator

Touch to turn on/off the LED indicator.

### 11.2.6 Status bar hidden

Touch to set whether all notification of third application will be shown on the left top of the status bar.

### 11.2.7 Storage

Use these settings to monitor the total and available space on your phone and on your microSD card; to manage your microSD card; and if necessary, to reset the phone, erasing all of your personal information.

If SD has been detected, the system will remind you that if you want to set SD card as preferred space for daily use and you could always change the storage location by touch **Settings\Storage\Default storage location**.

#### Internal storage

This menu displays the amount of internal phone storage in different colours. The available space will be shown in grey, which shows the amount of internal phone storage used by the operating system, its components, applications (including those you downloaded), permanent and temporary data.



To switch the Internal storage location may result that some data could not be used and the running applications error. If a warning message comes up saying that phone memory is limited, you are required to free up space by deleting some unwanted applications, downloaded files, etc.

## SD card

Lists the amount of space on any microSD card installed in your phone and the amount you can use to store photos, videos, music, and other files. You can touch one category to access the function and learn more details.

### Mount/Unmount SD card

You must mount the microSD card before using applications and files in it, or formatting the microSD card. Unmount the microSD card from your phone so that you can safely remove it when the phone is on.

### Erase SD card

Permanently erases everything on a microSD card and prepares it for use with your phone.

## 11.2.8 Battery management

In battery management screen, touch one category, then you can view specific power consumption.

You can adjust power use via the screen brightness or screen timeout in Display screen. You can also set your phone to saving mode or ultimate saver mode and in the latter mode, only four functions can be used including Phone, Contacts, Messaging and Calendar.

## 11.2.9 Manage applications

You use the Manage applications settings to view details about the applications installed on your phone, to manage their data and force them to stop, and to set whether you want to permit installation of applications that you obtain from web sites and emails.


## Manage Apps

- **Download:** Touch to manage and remove installed applications.
- **Running:** Touch to view and control currently running service.
- **All:** Touch to view storage used by applications.

## 11.3 Personal

### 11.3.1 Location access

#### Access to my location

Touch the switch  to enable to use information from Wi-Fi and mobile networks to determine your approximate location, for use in Google Maps, when you search, and so on. When you select this option, you're asked whether you consent to share your location anonymously with Google's location service.

#### GPS satellites

Check to use your phone's global positioning system (GPS) satellite receiver to pinpoint your location within an accuracy as close as several meters ("street level"). The process of accessing the GPS satellite and setting your phone's precise location for the first time will require up to 5 minutes. You will need to stand in a place with a clear view of the sky and avoid moving. After this, GPS will only need 20-40 seconds to identify your precise location.

#### Wi-Fi & Mobile network location

Mark the checkbox to allow Google's location service to collect anonymous location data. Some data may be stored on your device. When no apps are running, collection may occur.

## 11.3.2 Security

### Find my phone

Touch the switch  to enable Find my phone function.

### Encrypt phone

Require a numeric PIN or passwords to decrypt your phone each time you power it on.

### Set up SIM card lock

- Mark the checkbox of **Lock SIM card** to lock the SIM card with PIN code.
- Touch **Change SIM PIN** to change the PIN code.

### Make passwords visible

Mark the checkbox to show passwords as you type.

### Device administrators

Touch to view or deactivate device administrators.

### App options

Touch to view app detail information.

### Unknown sources

Mark the checkbox to permit installation of applications that you obtain from web sites, emails, or other locations other than Google Play Store.

To protect your phone and personal data, download applications only from trusted sources, such as Google Play Store.

### Verify apps

Mark the checkbox to disallow or warn before installation of apps that may cause harm.

### Trusted credentials

Touch to display trusted CA certificates.

### Install from SD card

Touch to install encrypted certificates from the microSD card.

### Clear credentials

Touch to remove all certificates.

## 11.3.3 Language & input

Use the Language & input settings to select the language for the text on your phone and for configuring the onscreen keyboard. You can also configure voice input settings and the pointer speed.

### Language

Touch to select the language and the region you want.


### Spell checker

Mark the checkbox to enable the system to show suggested words.

### Personal dictionary

Touch to open a list of the words you've added to the dictionary. Touch a word to edit or delete it. Touch the add button (+) to add a word.

## Default

Touch to select a default input method. Touch **Set up input methods** to show all input methods. Touch the settings icon  to configure a certain input method.

## Android keyboard

The Android keyboard settings apply to the onscreen keyboard that is included with your phone. The correction and capitalization features affect only the English version of the keyboard. Available options are as follows:

- **Input languages:** Touch to set input language.
- **Auto-capitalization:** Mark the checkbox to have the onscreen keyboard automatically capitalize the first letter of the first word after a period, the first word in a text field, and each word in name fields.
- **Vibrate on keypress:** Mark the checkbox to have the phone vibrate briefly each time you touch a key on the onscreen keyboard.
- **Sound on keypress:** Mark the checkbox to play a brief sound each time you touch a key on the onscreen keyboard.
- **Popup on keypress:** Mark the checkbox to popup the key that you touched.
- **Voice input key:** Touch to set the Mic button on Main keyboard or symbols keyboard or not display.
- **Personal dictionaries:** Touch to open a list of the words you've added to the dictionary. Touch a word to edit or delete it. Touch the add button (+) to add a word.
- **Add-on dictionaries:** Touch to select language for personal dictionaries.
- **Block offensive words:** Mark the checkbox to hide recognised offensive voice results.
- **Auto-correction:** Touch to turn on/off auto correction, or you can also adjust the sensitivity of correction.
- **Show correction suggestions:** Touch to show or not the correction suggestions while typing.


- **Next-word suggestions:** Mark the checkbox to use the previous word in making suggestions.
- **Advanced settings:** Touch to view more advanced settings for android keyboard, such as **Key popup dismiss delay**, **Suggest Contact names**, and etc.

## Voice Search

Touch to enter voice search settings.

- **Language:** Touch to choose a language for voice search.
- **Speech output:** Touch to choose speech output: **On, Hands-free only** or **Off**.
- **Block offensive words:** Mark the checkbox to hide recognised offensive voice results.
- **Offline speech recognition:** Touch to download other languages to enable voice input while offline.
- **Bluetooth headset:** Mark the checkbox to enable record audio through bluetooth headset if available.

## Text-to-speech output

- **Preferred engine:** Touch to choose a preferred text-to-speech engine, touch the settings icon  to show more choices for each engine.
- **Speech rate:** Touch to open a dialog where you can select how quickly you want the synthesizer to speak.
- **Listen to an example:** Touch to play a brief sample of the speech synthesizer, using your current settings.

## Pointer speed

Touch to open a dialog where you can change the pointer speed, touch **OK** to confirm.

### 11.3.4 Backup & reset

#### Back up my data

Mark the checkbox to back up your phone's settings and other application data to Google Servers, with your Google Account. If you replace your phone, the settings and data you've backed up are restored onto the new phone for the first time you sign in with your Google Account. If you mark this option, a wide variety of settings and data are backed up, including your Wi-Fi passwords, bookmarks, a list of the applications you've installed, the words you've added to the dictionary used by the onscreen keyboard, and most of the settings that you configure with the Settings application. If you unmark this option, you stop backing up your settings, and any existing backups are deleted from Google Servers.

#### Backup account

Touch to back up your account.

#### Automatic restore

Mark the checkbox to restore your backed up settings or other data when you reinstall an application.

#### Factory data reset

Erase all of your personal data from internal phone storage, including information about your Google Account, any other accounts, your system and application settings, and any downloaded applications. Resetting the phone does not erase any system software updates you've downloaded or any files on your microSD card, such as music or photos. If you reset the phone in this way, you're prompted to re-enter the same kind of information as when you first started Android.

When you are unable to power on your phone, there is another way to perform a factory data reset by using hardware keys. Press the **Volume up** key and the **Power** key at same time until the screen lights up.

### 11.4 Add account

Use the Add account to add, remove, and manage your Google and other supported accounts. You can also use these settings to control how and whether all applications send, receive, and synchronize data on their own schedules, and whether all applications can synchronize user data automatically.

Gmail, Google Calendar, and other applications may also have their own settings to control how they synchronize data; see the sections on those applications for details.

Touch an account to see all sync options. Mark the checkbox to permit applications to synchronize data on their own schedule. You can also touch Menu key and **Sync now** to synchronize data for chosen items of that account.

### 11.5 System

#### 11.5.1 Date & time

Use Date & Time settings to customize your preferences for how date and time are displayed.

#### Automatic date & time

Mark the checkbox to use network-provided date and time. Or unmark to set all values manually.

#### Automatic time zone

Mark the checkbox to use network-provided time zone. Or unmark to set all values manually.

#### Set date

Touch to open a dialog where you can manually set the phone's date.

### **Set time**

Touch to open a dialog where you can manually set the phone's time.

### **Select time zone**

Touch to open a dialog where you can set the phone's time zone.

### **Use 24-hour format**

Mark the checkbox to display the time using 24-hour clock format.

### **Choose date format**

Touch to open a dialog where you can select the format for displaying dates.

## **11.5.2 Accessibility**

You use the Accessibility settings to configure any accessibility plug-ins you have installed on your phone.

### **TalkBack**

When Talkback is on, your device provides spoken feedback to help blind and lowvision users.

### **Magnification gestures**

Touch to turn on/ off the Magnification gestures.

### **Large text**

Mark the checkbox to enlarge the screen text.

### **Speak passwords**

Mark the checkbox to speak passwords while you typing.

### **Accessibility shortcut**

Touch to turn on/ off the Accessibility shortcut.

### **Text-to-speech output**

Please refer to "**Preferred engine/Speech rate/Listen to an example**" setting before.

### **Touch & hold delay**

Touch to adjust the duration of touch and hold delay. This function enables your phone to differ touch and touch & hold, which may avoid incorrect operations.

### **Enhance web accessibility**

Touch to open a dialog which asks you to install scripts from Google which makes their web content more accessible. Touch **Allow** to confirm.

## **11.5.3 Regulatory & safety**

Touch to view product information.

## **11.5.4 Quick start**

Mark the checkbox to shorten boot time.

### 11.5.5 About phone

This contains information about things ranging from Legal information, Model number, Firmware version, Baseband version, Kernel version, Build number to those listed below:

#### System updates

Touch to check for system updates.

#### Status

This contains the status of the Battery status, Battery level, My phone number, Network, Signal strength, etc.

#### Legal information

Touch to view legal information.

## 12 Making the most of your phone .....

### 12.1 Smart Suite

- **Contacts**

Allow you to back up contact entries so that you don't have to worry about losing, breaking, switching phones or changing service providers.

- **Messages**

Free you from painstakingly inputting text on the keypads. All of your messages are easily accessible and well-organized.

- **Photos**

Allow you to easily import photos from your PC or the handset and organize them in different albums for better management.

- **Videos**

Allow you to insert video files from your PC for playback and then upload them to a handset folder.

- **Music**

Allow you to quickly search for your favourites in your PC, manage the ultimate Library, and enjoy the easiest digital jukebox in your own mobile way.

- **Application**

Allow you to import downloaded mobile applications and have them installed into your handset upon synchronization.

- **Backup**

Allow you to back up your contacts, messages, calendar, photos and applications, then import the backup files to your phone.

### **Supported Operating Systems**

Windows XP/Vista/Windows 7.

## **12.2 OVER-THE-AIR SOFTWARE UPDATE CAPABLE**

Using the OVER-THE-AIR SOFTWARE UPDATE CAPABLE tool you can update your phone's software.

To access **System updates**, please touch the **Menu** key from the Home screen, then **Settings>About phone\System updates**. Touch **Check for updates**, and the phone will search for the latest software. If you want to update the system, please touch the button **Download**, after it is done please touch **Install** to complete the upgrade. Now your phone's software will be the latest version.

You should turn on data connection before searching for updates. Settings for auto-check intervals and reminders about upgrades are also available once you restart the phone.

If you have chosen auto-check, when the system discovers the new version, dialog will pop up to choose download or ignore, the notification also will show in status bar.

## **13 Limited warranty .....**

TCT Mobile (US), Inc. warrants to the original retail purchaser of this wireless device that should this product or part thereof during normal consumer usage and condition be proven to be defective in material or workmanship that results in product failure within the first twelve (12) months from the date of purchase as shown on your original sales receipt from an authorized sales agent. Such defect(s) will be repaired or replaced (with new or rebuilt parts) at the company's option without charge for parts or labor directly related to the defect(s).

Batteries, power adapters, and other accessories sold as in box items are also warranted against defects and workmanship that results in product failure within the first twelve (12) months period from the date of purchase as shown on your original sales receipt. Such defect(s) will be repaired or replaced (with new or rebuilt parts) at the company's option without charge for parts or labor directly related to the defect(s).

The limited warranty for your wireless device will be voided if any of the following conditions occur:

- Non-compliance with the instructions for use or installation, or with technical and safety standards applicable in the geographical area where your phone is used;
- Connection to any equipment not supplied or not recommended by TCT Mobile (US), Inc.;
- Modification or repair performed by individuals not authorized by TCT Mobile (US), Inc. or its affiliates;
- Changes to the device operating system by the user or third party applications;
- Acts of god such as inclement weather, lightning, power surges, fire, humidity, infiltration of liquids or foods, chemical products, crash, high voltage, corrosion, oxidation;



- Removal or altering of the wireless device's event labels or serial numbers (IMEI);
- Damage from exposure to water or other liquids, moisture, humidity, excessive temperatures or extreme environmental conditions, sand, excess dust and any condition outside the operating guidelines;
- Defects in appearance, cosmetic, decorative or structural items such as framing and non-operative parts;
- Damage as result of physical abuse regardless of cause.
- Rooted devices.

There are no express warranties, whether written, oral or implied, other than this printed limited warranty or the mandatory warranty provided by your jurisdiction. In no event shall TCT Mobile (US), Inc. or any of its affiliates be liable for incidental or consequential damages of any nature whatsoever, including but not limited to commercial loss, to the full extent those damages can be disclaimed by law. Some states do not allow the exclusion or limitation of incidental or consequential damages, or limitation of the duration of implied warranties, so the preceding limitations or exclusions may not apply to you.

## 14 Accessories .....

The latest generation of ALCATEL ONETOUCH mobile phones offers a built-in handsfree feature that allows you to use the telephone from a distance, placed on a table for example. For those who prefer to keep their conversations confidential, an earpiece is also available known as the headset.


1. Charger
2. USB cable
- 3 Fly headset
- 4 SIM tool
- 5 QG



Only use your telephone with the ALCATEL ONETOUCH batteries, chargers and accessories in your box.

# 15 Troubleshooting.....

Before contacting the service centre, you are advised to follow the instructions below:

- You are advised to fully charge (  ) the battery for optimal operation.
- Avoid storing large amounts of data in your phone as this may affect its performance.
- Use Factory data reset and the upgrade tool to perform phone formatting or software upgrading (to reset factory data, hold down the **Power** key and the **Volume up** key at the same time). ALL User phone data: contacts, photos, messages and files, downloaded applications will be lost permanently. It is strongly advised to fully backup the phone data and profile via Smart Suite before doing formatting and upgrading.

and carry out the following checks:

## **My phone cannot be switched on or is frozen**

- When the phone cannot be switched on, charge for at least 20 minutes to ensure the minimum battery power needed, then try to switch on again.
- When the phone falls into a loop during power on-off animation and the user interface cannot be accessed, press and hold the Volume down key to enter Safe Mode. This eliminates any abnormal OS booting issues caused by 3rd party APKs.
- If neither method is effective, please reset the phone using the Power key and the Volume up key, (holding both together).

## **My phone has not responded for several minutes**

- Restart your phone by pressing and holding the Power key more than 9s.

## **My phone turns off by itself**

- Check that your screen is locked when you are not using your phone, and make sure the **Power** key is not mis-contacted due to unlocked screen.
- Check the battery charge level.

## **My phone cannot charge properly**

- Make sure you are using an ALCATEL ONETOUCH charger from the box.
- Make sure that your battery is not completely discharged; if the battery power is empty for a long time, it may take around 20 minutes to display the battery charger indicator on the screen.
- Make sure charging is carried out under normal conditions (0°C to +40°C).
- When abroad, check that the voltage input is compatible.

## **My phone cannot connect to a network or “No service” is displayed**

- Try connecting in another location.
- Verify the network coverage with your operator.
- Check with your operator that your SIM card is valid.
- Try selecting the available network(s) manually (see “**11.1.7 More... Mobile networks**”)
- Try connecting at a later time if the network is overloaded.


## **My phone cannot connect to the Internet**

- Check that the IMEI number (press \*#06#) is the same as the one printed on your warranty card or box.
- Make sure that the internet access service of your SIM card is available.
- Check your phone's internet connecting settings.
- Make sure you are in a place with network coverage.
- Try connecting at a later time or another location.

### **Invalid SIM card**

- Make sure the SIM card has been correctly inserted (see “**Inserting or removing the SIM card**”).
- Make sure the chip on your SIM card is not damaged or scratched.
- Make sure the service of your SIM card is available.

### **Unable to make outgoing calls**

- Make sure you have dialed a valid number and have touched  .
- For international calls, check the country and area codes.
- Make sure your phone is connected to a network, and the network is not overloaded or unavailable.
- Check your subscription status with your operator (credit, SIM card valid, etc.).
- Make sure you have not barred outgoing calls.
- Make sure that your phone is not in flight mode.

### **Unable to receive incoming calls**

- Make sure your phone is switched on and connected to a network (check for overloaded or unavailable network).
- Check your subscription status with your operator (credit, SIM card valid, etc.).
- Make sure you have not forwarded incoming calls.
- Make sure that you have not barred certain calls.
- Make sure that your phone is not in flight mode.


### **The caller's name/number does not appear when a call is received**

- Check that you have subscribed to this service with your operator.
- Your caller has concealed his/her name or number.

### **I cannot find my contacts**

- Make sure your SIM card is not broken.
- Make sure your SIM card is inserted properly.
- Import all contacts stored in SIM card to phone.

### **The sound quality of the calls is poor**

- You can adjust the volume during a call by pressing the **Volume Up/Down** key.
- Check the network strength  .
- Make sure that the receiver, connector or speaker on your phone is clean.

### **I am unable to use the features described in the manual**

- Check with your operator to make sure that your subscription includes this service.
- Make sure this feature does not require an ALCATEL ONETOUCH accessory.

### **When I select a number from my contacts, the number cannot be dialed**

- Make sure that you have correctly recorded the number in your file.
- Make sure that you have selected the country prefix when calling a foreign country.

### **I am unable to add a contact in my contacts**

- Make sure that your SIM card contacts are not full; delete some files or save the files in the phone contacts (i.e. your professional or personal directories).

### **My callers are unable to leave messages on my voicemail**

- Contact your network operator to check service availability.

### **I cannot access my voicemail**

- Make sure your operator's voicemail number is correctly entered in "Voicemail number".
- Try later if the network is busy.

### **I am unable to send and receive MMS**

- Check your phone memory availability as it might be full.
- Contact your network operator to check service availability and check MMS parameters.
- Verify the server centre number or your MMS profile with your operator.
- The server centre may be swamped, try again later.

### **SIM card PIN locked**

- Contact your network operator to obtain the PUK code (Personal Unblocking Key).

### **I am unable to connect my phone to my computer**

- Install Smart Suite.
- Check that your USB driver is installed properly.
- Open the Notification panel to check if the Smart Suite Agent has activated.
- Check that your computer meets the requirements for Smart Suite Installation.
- Make sure that you're using the right cable from the box.

### **I am unable to download new files**

- Make sure there is sufficient phone memory for your download.
- Select the microSD card as the location to store downloaded files.
- Check your subscription status with your operator.

### **The phone cannot be detected by others via Bluetooth**

- Make sure that Bluetooth is turned on and your phone is visible to other users (see "**6.3 Connecting to Bluetooth devices**").
- Make sure that the two phones are within Bluetooth's detection range.

### **How to make your battery last longer**

- Make sure you follow the complete charge time (minimum 3 hours).
- After a partial charge, the battery level indicator may not be exact. Wait for at least 20 minutes after removing the charger to obtain an exact indication.
- Adjust the brightness of screen as appropriate.
- Extend the email auto-check interval for as long as possible.
- Update news and weather information on manual demand, or increase their auto-check interval.
- Exit background-running applications if they are not being used for a long time.
- Deactivate Bluetooth, Wi-Fi, or GPS when not in use.

### **The phone will become warm following prolonged calls, game playing, internet surfing or running other complex applications.**

- This heating is a normal consequence of the CPU handling excessive data. Ending above actions will make your phone return to normal temperatures.

# 16 Specifications

<b>Processor</b>	Qualcomm® 8926 Quad core 1.2G Hz
<b>Platform</b>	Android™ 4.3
<b>Memory</b>	ROM: 8 GB RAM: 1 GB
<b>Dimensions (LxWxT)</b>	136.5*69.7*7.45 mm
<b>Weight</b>	Around 126 grams with battery
<b>Display</b>	5-inch QHD touchscreen with 1280 x 720 resolution
<b>Network</b>	LTE: B1/2/4/7/17 UMTS: Quad-band 850/900/1900/2100 MHz GSM: Quad-band 850/900/1800/1900 MHz (Band frequency and data speed are operator dependent.)
<b>GPS</b>	Assisted GPS/Glonass GPS
<b>Connectivity</b>	<ul style="list-style-type: none"><li>• Bluetooth BT4.0,LE</li><li>• Wi-Fi IEEE 802.11 b/g/n</li><li>• 3.5 mm audio jack</li><li>• Micro-USB</li></ul>

<b>Camera</b>	<ul style="list-style-type: none"><li>• 8.0 megapixel color back camera</li><li>• 1.3 megapixel color front camera</li></ul>
<b>Audio supported formats</b>	MP3, MIDI, FLAC, Vorbis, AAC, AAC+, eAAC+, AMR, MP2, PCM/WAV
<b>Video supported formats</b>	H.264, H.263, MPEG-4, XVID, VP8, MPEG-2
<b>Battery</b>	<ul style="list-style-type: none"><li>• Rechargeable Li-polymer battery</li><li>• Capacity: 2150 mAh</li></ul>
<b>Expansion Slot</b>	microSD™ memory card (Availability of microSD card depends on market)
<b>Special Features</b>	<ul style="list-style-type: none"><li>• G-sensor</li><li>• Light Sensor</li><li>• Proximity Sensor</li><li>• E-Compass</li></ul>

**Note:** Specifications are subject to change without notice.

ALCATEL is a trademark of Alcatel-Lucent  
and is used under license by  
TCT Mobile Limited.

© Copyright 2014 TCT Mobile Limited  
All rights reserved

TCT Mobile Limited reserves  
the right to alter material  
or technical specification  
without prior notice.

All "Signature" ringtones embedded in this phone have been composed,  
arranged and mixed by NUTROPIC (Amar Kabouche).